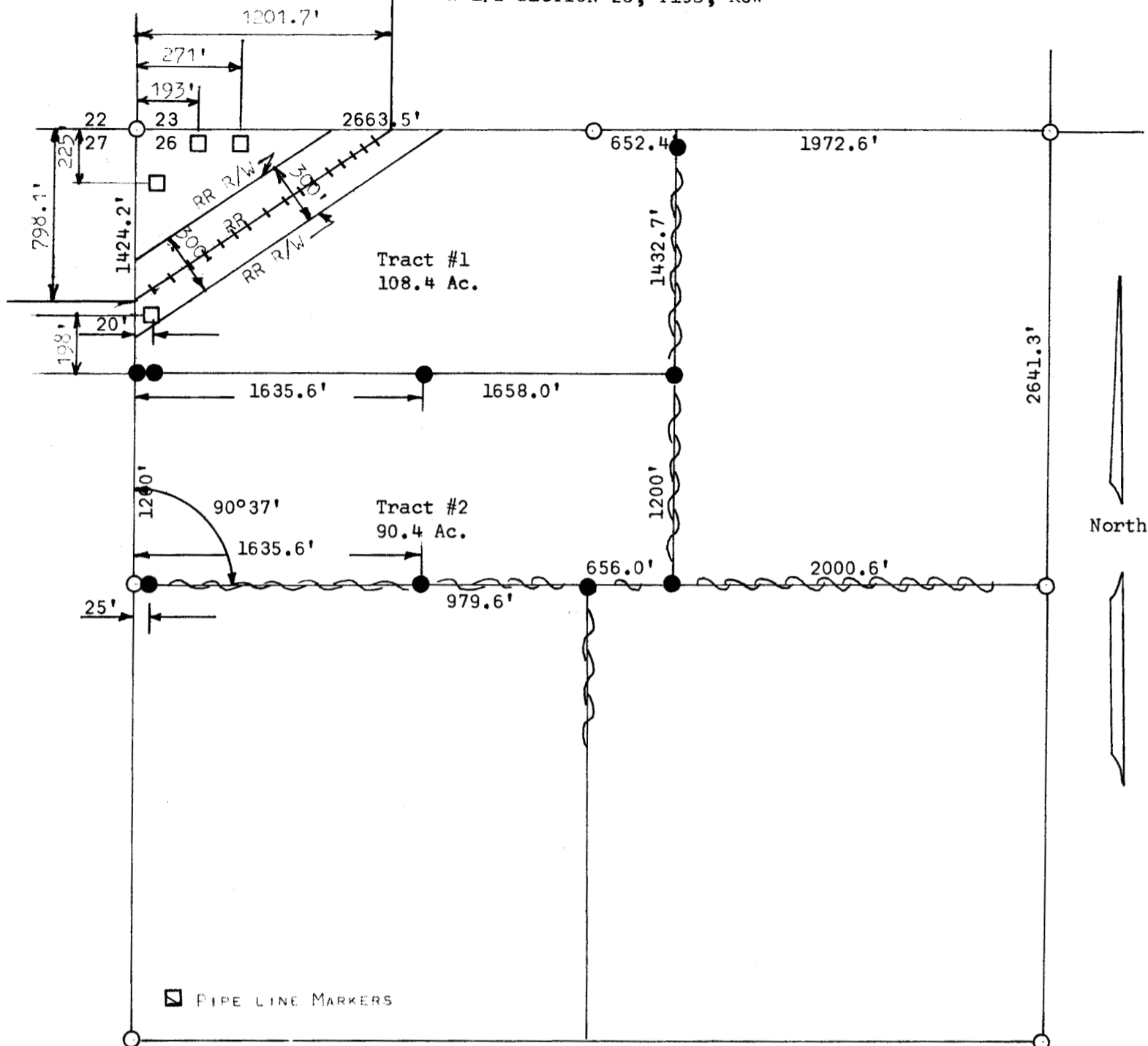


TRACT OF LAND IN THE
N 1/2 SECTION 26, T19S, R3W



I, Francis Rankin, County Engineer of McPherson County, Kansas, do hereby certify that under my supervision a survey was made in the NW 1/4 and the W 1/2 W 1/2 NE 1/4 Section 26, T19S, R3W of the 6th P.M. and described as follows:

Tract #1 - Beginning at the NW corner of the NW 1/4 of said Section 26; thence East on Section Line 3315.9 feet to the East Line of the W 1/2, W 1/2, NE 1/4; thence South on said line 1432.7 feet; thence West 3293.6 feet to West Section Line; thence North on Section Line 1424.2 feet to place of beginning. Land herein described contains 108.4 acres more or less.

Tract #2 - The South 1200 feet of the NW 1/4 of said section 26 and the South 1200 feet of the W 1/2, W 1/2, NE 1/4 of said Section 26. Land herein described contains 90.40 acres more or less.

The accompanying plat is a true exhibit of said survey as far as it is known to me.

Survey called for by Francis Melland

Signed this 26 day September 1966

F. R. Rankin
F. R. Rankin
County Engineer
McPherson, Kansas