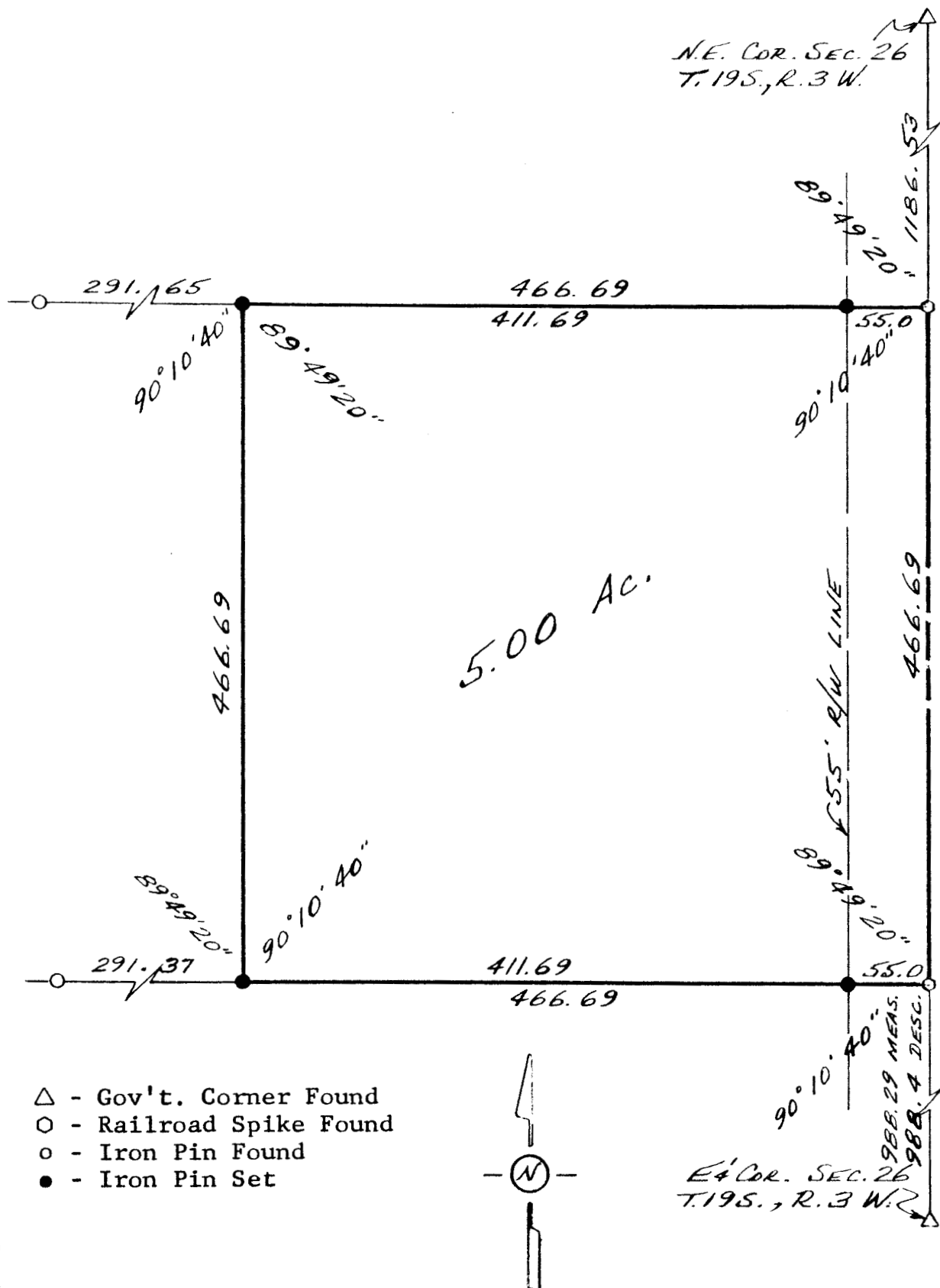


DESCRIPTION: Survey of a tract in the N.E. $\frac{1}{4}$ of Section 26, T.19 S., R.3 W. of the 6th P.M., McPherson County, Kansas as more particularly described on the attached sheet.



Scale: 1"=100'

I hereby certify this plat to be a true, correct and complete representation of the property described above and on the attached sheet, as surveyed by me, this 2nd day of July, 1980.

July, 1980.

Daniel E. Garber

Daniel E. Garber RLS

