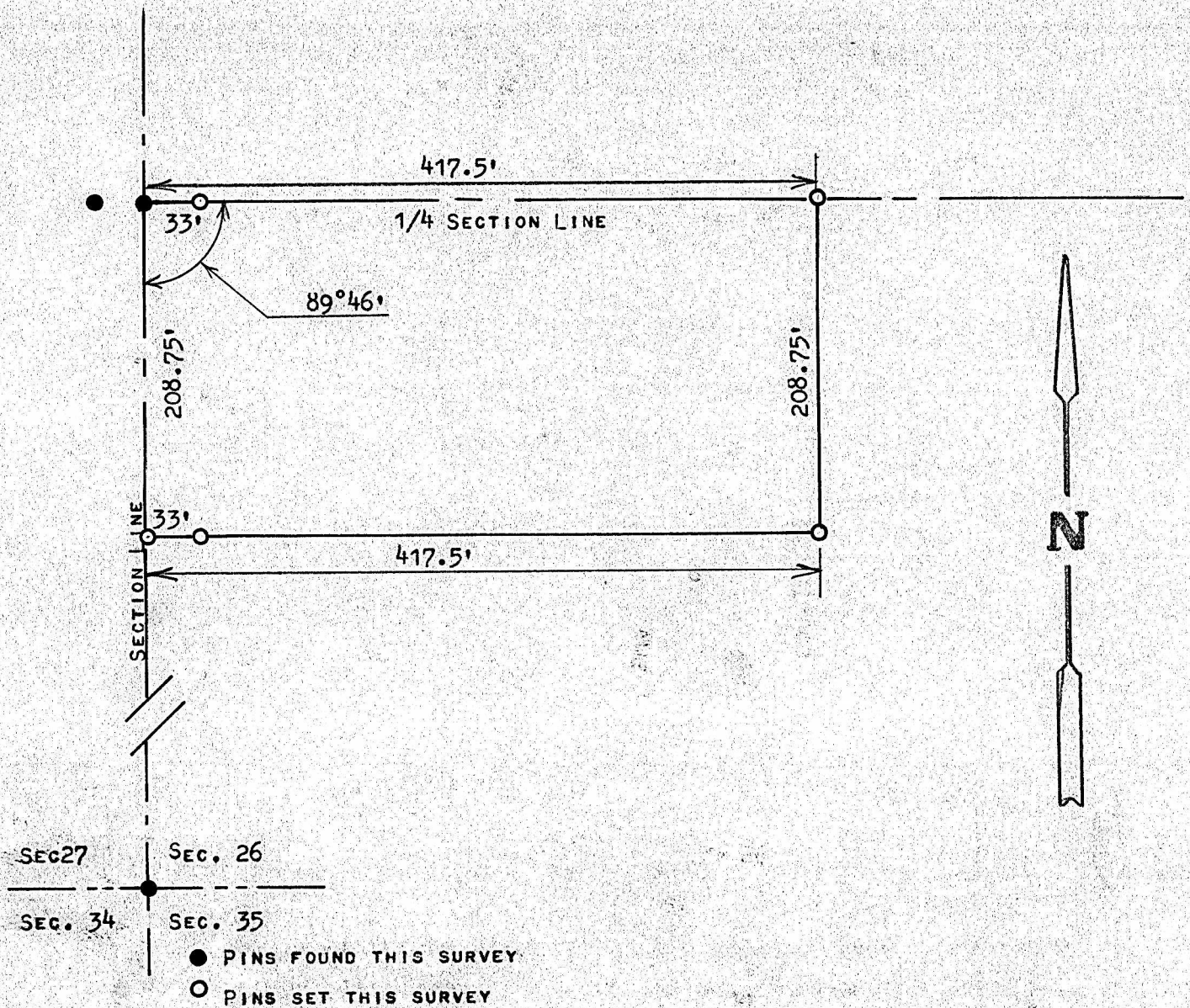


A SURVEY OF A TRACT OF LAND IN THE SW1/4,
SECTION 26, T19S - R2W, McPHERSON COUNTY, KANSAS



STATE OF KANSAS)
COUNTY OF MCPHERSON) SS

I, MELVIN FERGUSON, PROFESSIONAL ENGINEER OF THE STATE OF KANSAS DO HEREBY CERTIFY THAT UNDER MY SUPERVISION A SURVEY WAS MADE OF A TRACT OF LAND IN THE SW1/4, OF SECTION 26, T19S - R2W OF THE 6TH P.M. AND DESCRIBED AS FOLLOWS;
BEGINNING AT THE NW CORNER OF SAID SW1/4, SECTION 26, T19S - R2W; THENCE EAST ON 1/4 SECTION LINE 417.5 FEET; THENCE SOUTH PARALLEL WITH SECTION LINE 208.75 FEET; THENCE WEST TO SECTION LINE 417.5 FEET; THENCE NORTH 208.75 FEET TO PLACE OF BEGINNING, SAID TRACT OF LAND CONTAINS 2.0 ACRES MORE OR LESS, AND THAT THE ABOVE PLAT IS A TRUE EXHIBIT OF SAID SURVEY AS FAR AS IT IS KNOWN TO ME.

SURVEY CALLED FOR BY DARRYL G. UNRUH

SIGNED THIS 1st DAY OF OCTOBER, 1974

Melvin Ferguson
MELVIN FERGUSON
PROFESSIONAL ENGINEER
MCPHERSON, KANSAS

