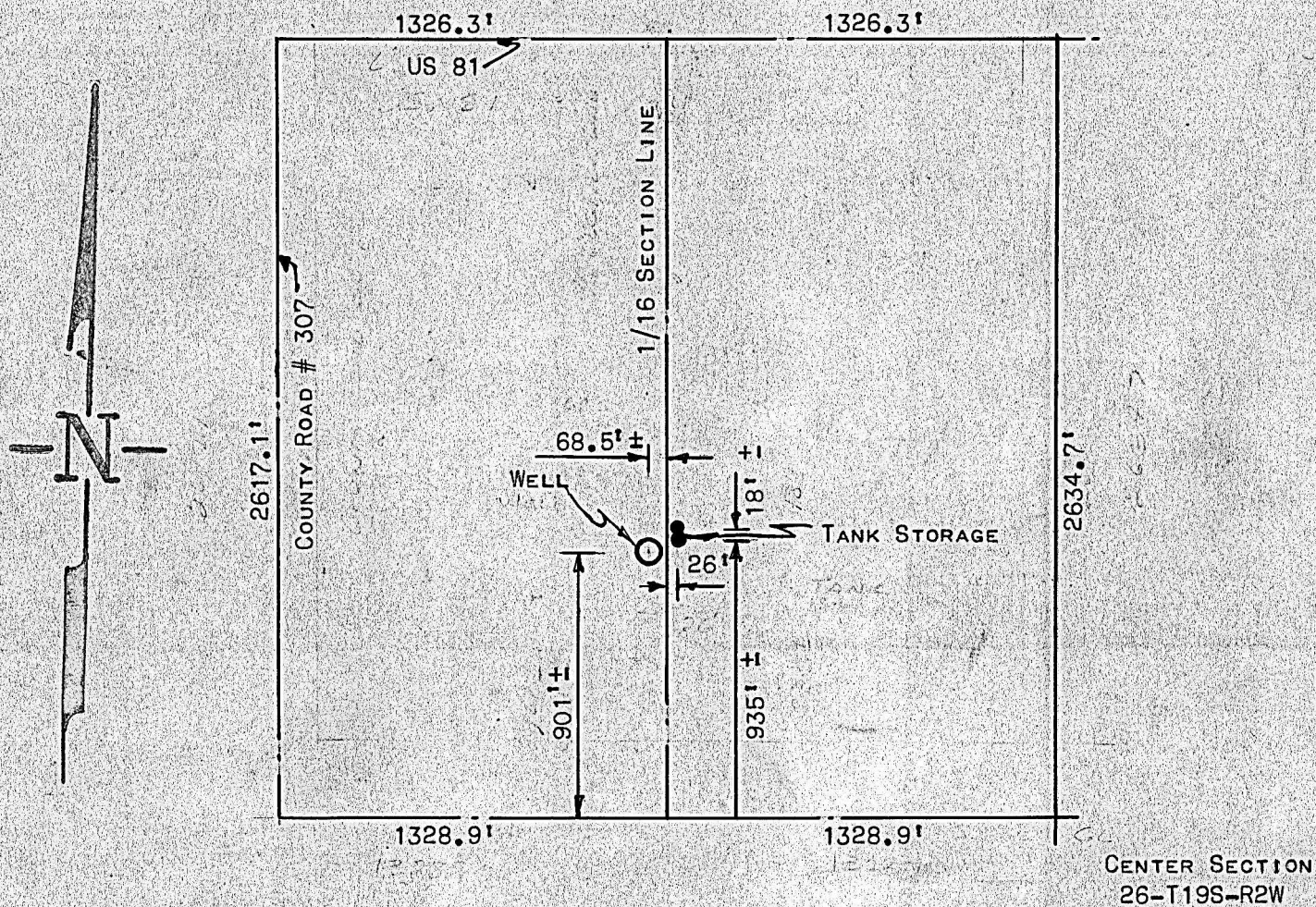


SURVEY IN THE NW¹/₄ SECTION
26-T19S-R2W



STATE OF KANSAS) SS
COUNTY OF McPHERSON)

I, FRANCIS D. WAGNER, COUNTY ENGINEER OF McPHERSON COUNTY KANSAS,
DO HEREBY CERTIFY THAT I DID CAUSE TO BE DONE ON THE 28TH DAY OF
MARCH, 1956 A SURVEY TO DETERMINE THE LOCATION OF AN OPERATING,
WELL AND TANK STORAGE UNITS IN THE NW¹/₄ OF SECTION 26, T19S, R2W
AS SHOWN ON ACCOMPANYING PLAT, I ALSO CERTIFY THAT THE ACCOMPANYING
PLAT IS A TRUE EXHIBIT OF SAID SURVEY.

APRIL 4, 1956

Francis D. Wagner
FRANCIS D. WAGNER
COUNTY ENGINEER