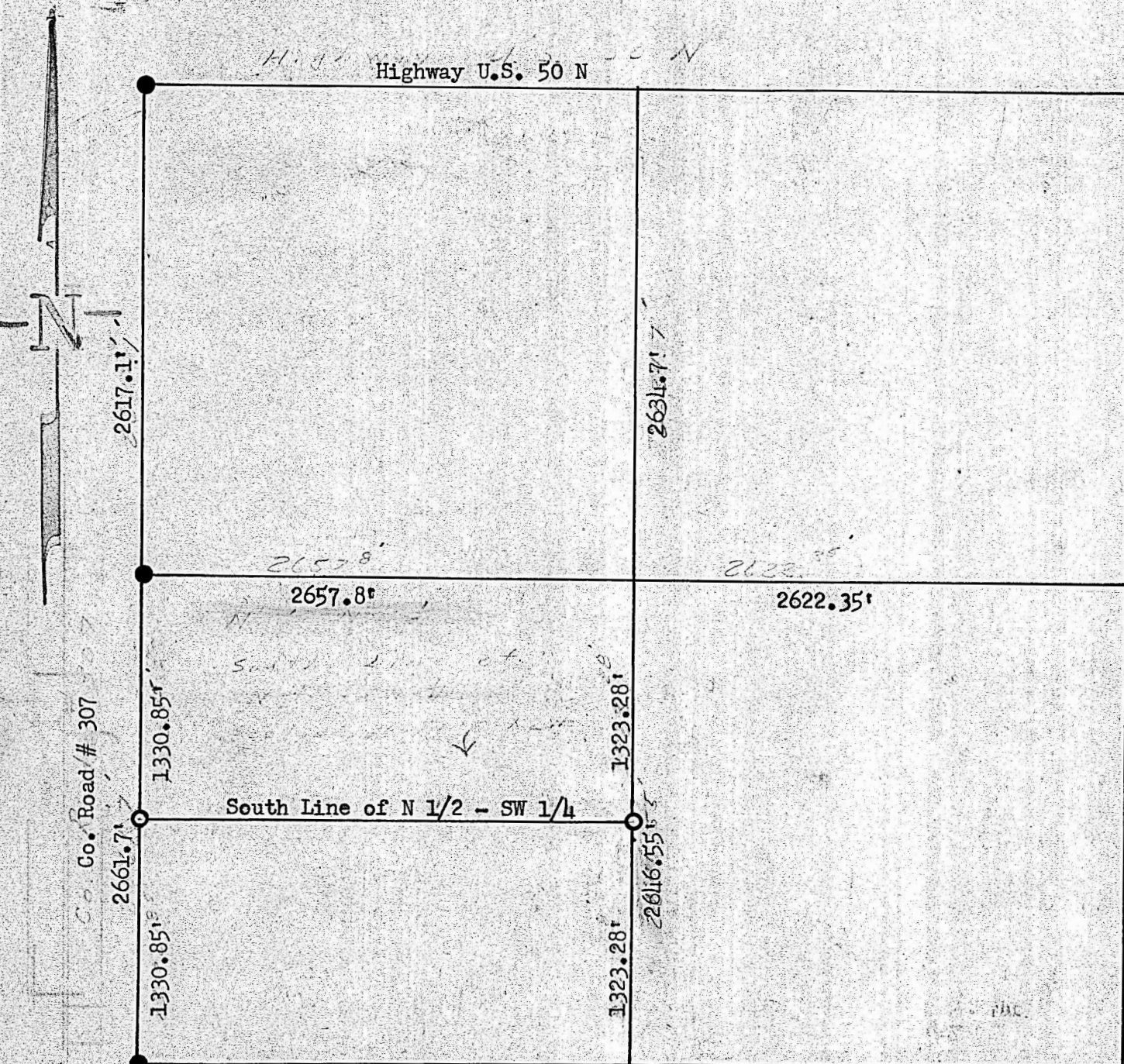


A Survey in the SW 1/4  
 Section 26 - T 19 S - R 2 W



- Pins From Previous Survey
- Pins set on this Survey

County of McPherson ) SS  
 State of Kansas )

I, Francis D. Wagner, County Engineer of McPherson County, do hereby certify that I did cause to be done on the 15th day of March 1955, a Survey of the SW 1/4 of Section 26-T 19 S-R 2 W of 6th P.M. described as follows:

Survey requested was to determine the South line of N 1/2 - SW 1/4 Section 26-T 19 S-R 2 W of 6th P.M.

and that accompanying plat is a true exhibit of said survey.

*Francis D. Wagner*  
 Francis D. Wagner  
 County Engineer  
 McPherson County



MICROFILM

D.A.C.