

BASIS OF BEARING = NAD 83 KANSAS SOUTH ZONE

LEGEND

- △ - Sectional Monument Found
- ▲ - Section Monument Set (5/8" x 24" Iron Rebar w/GSS CLS 52 Cap)
- - 5/8" x 24" Iron Rebar Set w/GSS CLS 52 Cap
- (C) - Calculated
- (M) - Measured
- (PS) - Previous Survey by Francis D. Wagner 3-5/1955
- (PS1) - Previous Survey GSS Project #G87-360
- (PS2) - Previous Survey by LS 697 2/7/1996

DESCRIPTION:

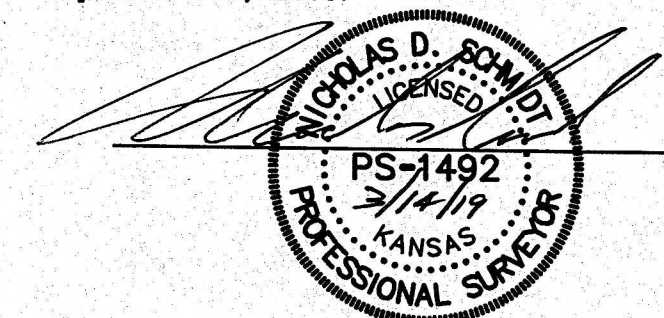
A portion of the North Half of the Southwest Quarter of Section 26, Township 19 South, Range 2 West of the 6th Principal Meridian, McPherson County, Kansas described as follows:

Beginning at the Northeast corner of said Southwest Quarter; thence on a NAD 83 Kansas South Zone bearing of North 89°43'27" East on the North line of said Southwest Quarter a distance of 433.33 feet; thence South 00°34'09" East parallel with the West line of said Southwest Quarter a distance of 163.76 feet; thence North 89°25'51" East perpendicular to said West line a distance of 204.52 feet; thence South 00°34'09" East parallel with said West line a distance of 167.63 feet; thence South 89°25'51" West perpendicular to said West line distance of 252.79 feet; thence South 00°34'09" East parallel with said West line a distance of 160.00 feet; thence South 58°22'13" West a distance of 184.26 feet; thence South 89°25'51" West perpendicular to said West line a distance of 227.23 feet to said West line; thence North 00°34'09" West on said West line a distance of 588.68 feet to the point of beginning.

Containing 6.177 Acres and subject to a road right of way easement across the West 30.00 feet thereof, and any other easements or restrictions of record.

SURVEYOR'S CERTIFICATE:

I hereby certify this plat to be a true, correct and complete representation of the property described hereon, as surveyed under my supervision, this 14th day of March, 2019.



Prepared For:		Description:	
DARRYL UNRUH		A PORTION OF THE N 1/2, SW 1/4 SECTION 26, T19S, R2W McPHERSON COUNTY, KANSAS	
Prepared By:		Garber Surveying Service, P.A.	
HUTCHINSON (Main Office) 2908 North Plum St. 67502 Ph. 620-665-7032 Fax 620-663-7401			
McPHERSON (Branch Office) 115 East Marlin 67460 Ph. 620-241-4441 Fax 620-241-4458			
NEWTON (Branch Office) 511 North Poplar St. 67114 Ph. 316-283-5053 Fax 316-283-5073			
MANHATTAN (Branch Office) 3226 Kimball Ave Ste.#2 66503 Ph. 785-320-4810			
Drawn By: KDZ	Scale: 1"=100'	Date of Field Work: January 9, 2019	Job No:
Checked By: NDS	Date: 03/14/2019	Sheet 1 of 1 Sheet(s)	G2019-5

Revised March 14, 2019

