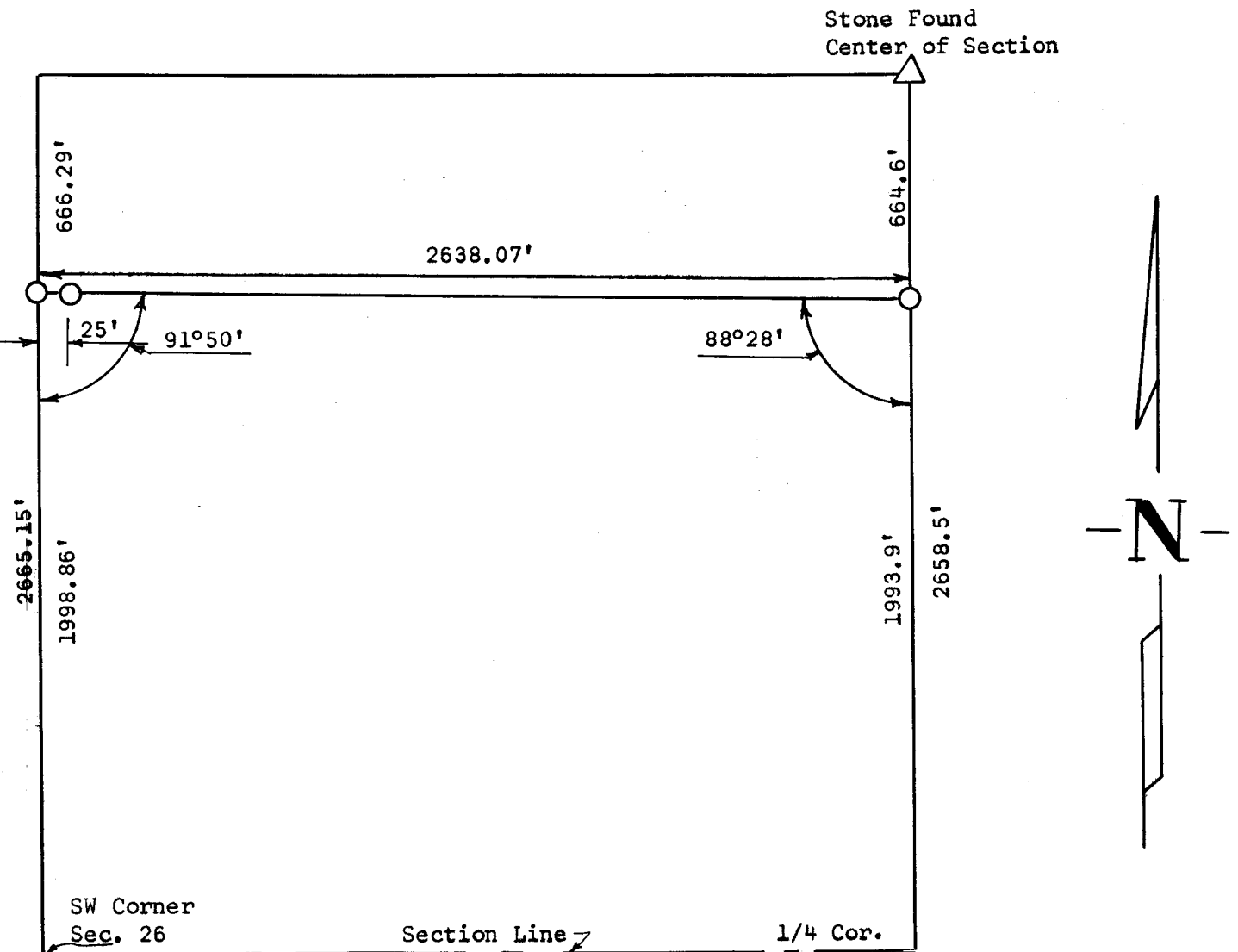


A SURVEY OF THE SOUTH 120 ACRES  
SW 1/4 OF SECTION 26, T18S, R2W



Pins Set This Survey

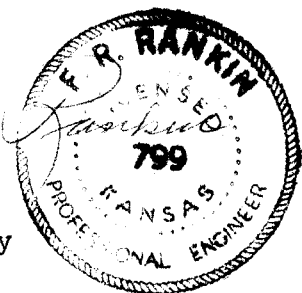
State of Kansas ) SS  
County of McPherson)

I, Francis Rankin, County Engineer of McPherson, County, Kansas hereby certify the above survey was done under my supervision of the South 120 Acres of W 1/2 of Section 26, T18S, R2W of the 6th P.M., and that the accompanying plat is a true exhibit of said survey as far as it is known to me.

Survey called for by Walter Thomas

Signed this 6 day of January, 1964

Francis Rankin  
County Engineer  
McPherson County



MICROFILM