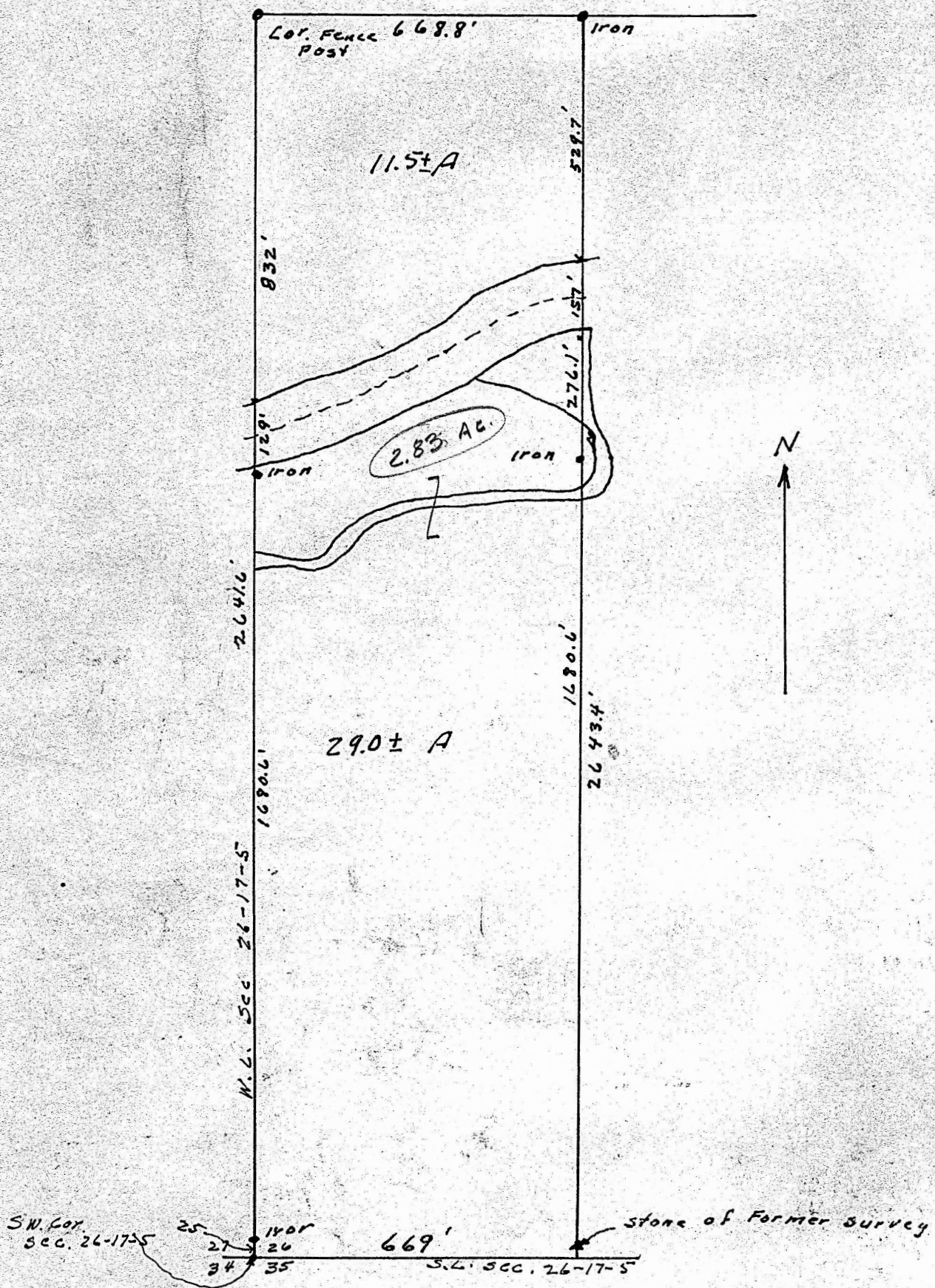


W $\frac{1}{2}$.W $\frac{1}{2}$.SW $\frac{1}{4}$. Sec. 26., T.17.S., R.5.W., 6th. P. M.



State, of Kansas, County of McPherson, ss.

I, G.D. Johnson Licensed Civil Engineer of the State of Kansas, do hereby certify that I did on the 21st. day of May 1954, survey the W $\frac{1}{2}$.W $\frac{1}{2}$.SW $\frac{1}{4}$. Sec. 26. T.17.S., R.5.W., 6th. P. M. containing 40.5 Acres more or less. Part of tract located north of existing center line of Smoky Hill River contains 11.5 Acres more or less and part of tract located south of existing center line of Smoky Hill River contains 29.0 Acres more or less.

I also certify that accompanying plat is a true exhibit of said survey.

G.D. Johnson Engr.



MICROFILM