

Certificate of Survey

Parcel in SE 1/4

S26-T17S-R2W

McPherson County, Ks



Landmark
SURVEYING & MAPPING INC.

Member Kansas Society of Land Surveyors

Office: (785) 263-2625 Fax: (785) 263-1580

301 North Broadway, P.O. Box 97

Abilene, Kansas 67410

Note

1)Basis of Bearings: Assumed S 00°00'00" E along the East line of S26-T17S-R2W.

2)Monuments found have an unknown origin unless noted otherwise.

3)Client did not request the improvements located.

Legend

● Set 1/2" Rebar w/ "Landmark CLS-116" cap

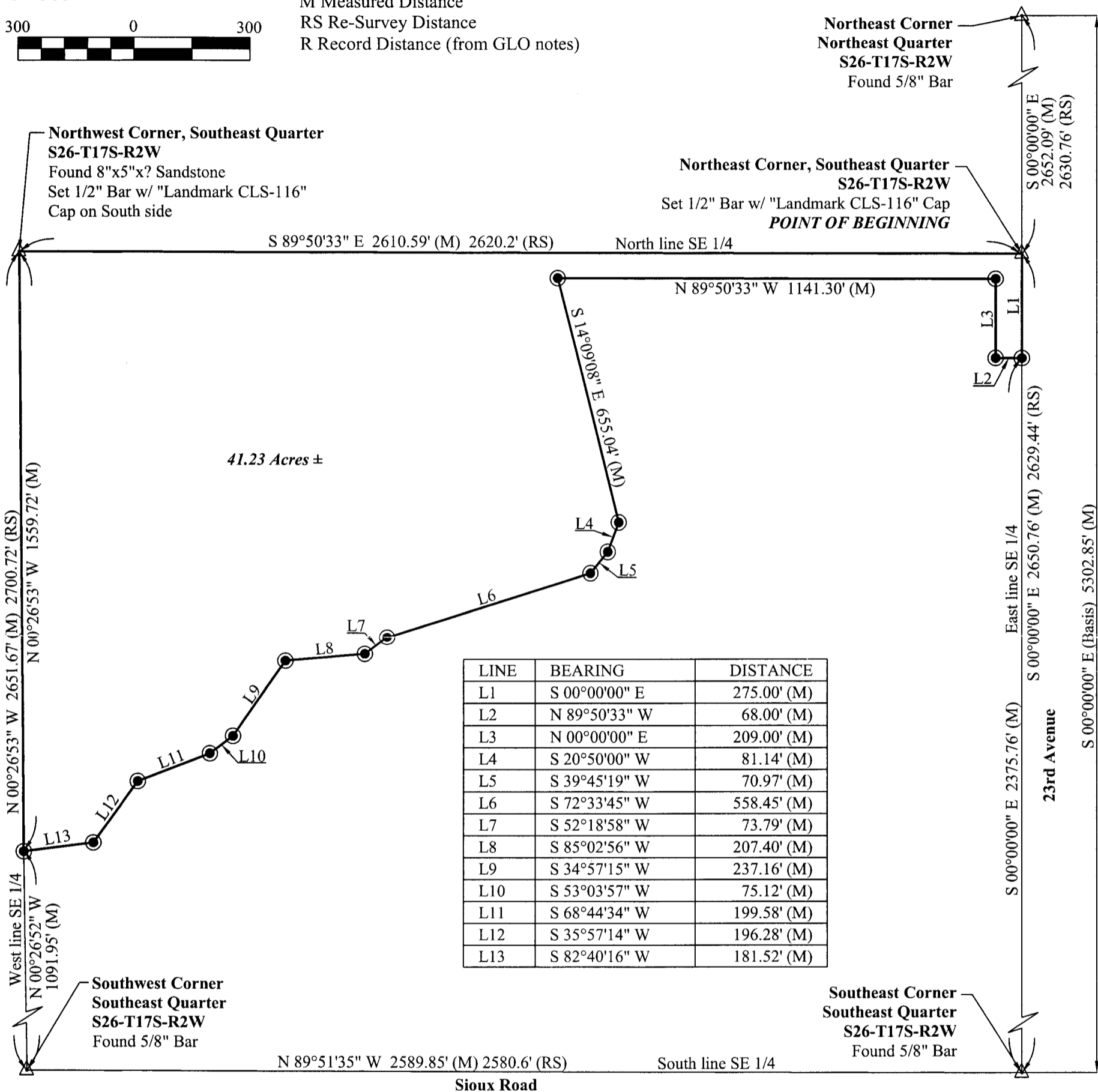
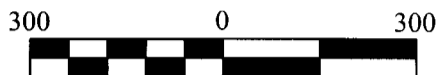
△ Section Corner

M Measured Distance

RS Re-Survey Distance

R Record Distance (from GLO notes)

1"=300'



Legal Description

A parcel of land located in the Southeast Quarter of Section 26, Township 17 South, Range 2 West of the 6th Principal Meridian in McPherson County, Kansas, more particularly described as follows:

Beginning at the Northeast corner of said Southeast Quarter;

- thence on an assumed bearing of S 00°00'00" E along the East line of said Southeast Quarter a distance of 275.00 feet;
- thence N 89°50'33" W a distance of 68.00 feet;
- thence N 00°00'00" E a distance of 209.00 feet;
- thence N 89°50'33" W a distance of 1141.30 feet;
- thence S 14°09'08" E a distance of 655.04 feet;
- thence S 20°50'00" W a distance of 81.14 feet;
- thence S 39°45'19" W a distance of 70.97 feet;

- thence S 72°33'45" W a distance of 558.45 feet;
 - thence S 52°18'58" W a distance of 73.79 feet;
 - thence S 85°02'56" W a distance of 207.40 feet;
 - thence S 34°57'15" W a distance of 237.16 feet;
 - thence S 53°03'57" W a distance of 75.12 feet;
 - thence S 68°44'34" W a distance of 199.58 feet;
 - thence S 35°57'14" W a distance of 196.28 feet;
 - thence S 82°40'16" W a distance of 181.52 feet to a point on the West line of said Southeast Quarter;
 - thence N 00°26'53" W along said West line a distance of 1559.72 feet to the Northwest corner of said Southeast Quarter;
 - thence S 89°50'33" E along the North line of said Southeast Quarter a distance of 2610.59 feet to the Point of Beginning;
- Said parcel contains 41.23 acres, more or less, and is subject to easements, reservations, and restrictions of record.

Project #: 03-3186 Date of Plot: 07/18/2003

Drawn By: JPJ Client: Carrol Houghton

Page 2 of 2