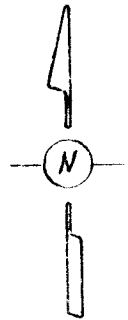


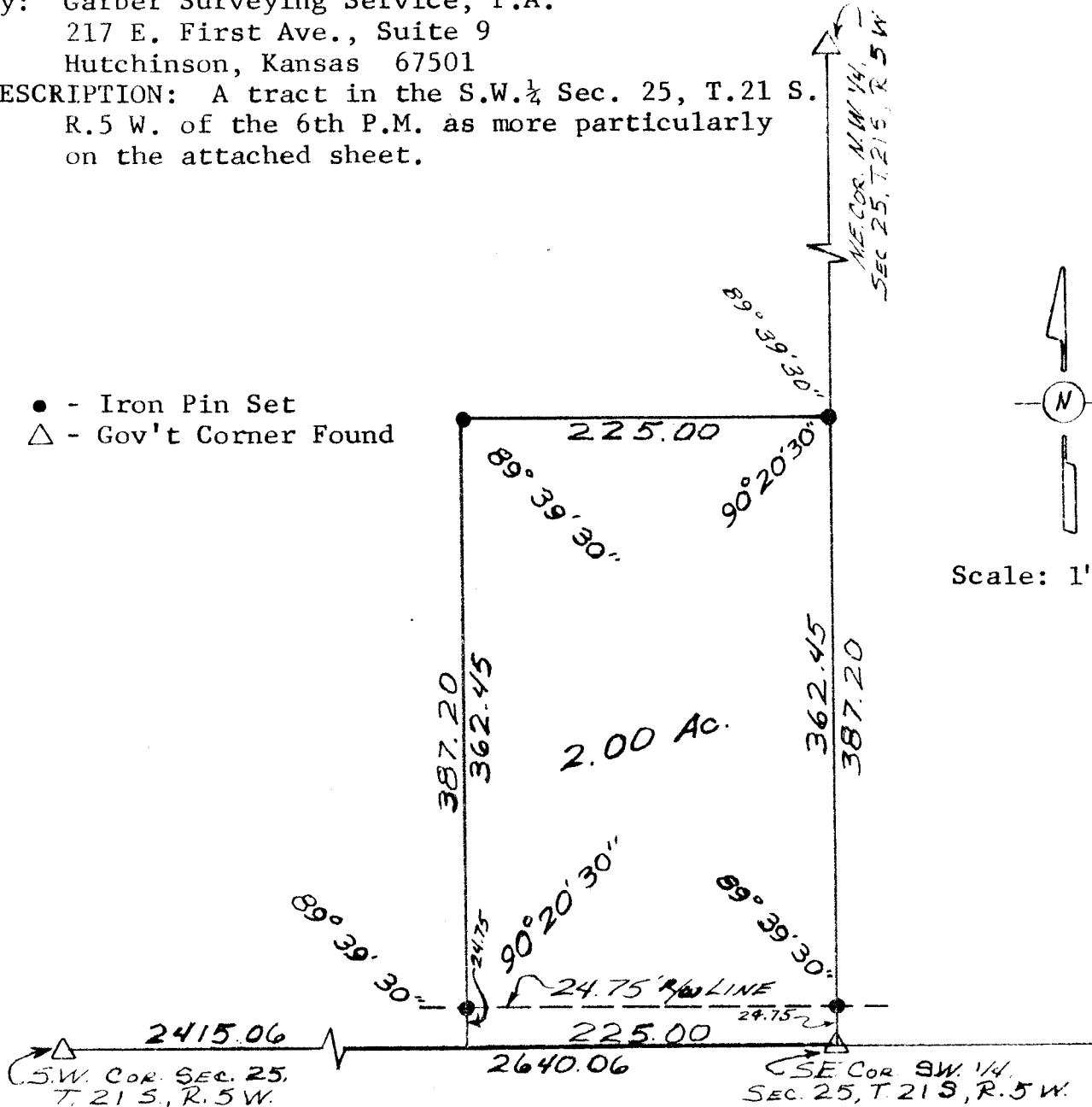
Survey for: Jay Regehr  
By: Garber Surveying Service, P.A.  
217 E. First Ave., Suite 9  
Hutchinson, Kansas 67501

DESCRIPTION: A tract in the S.W.  $\frac{1}{4}$  Sec. 25, T.21 S.  
R.5 W. of the 6th P.M. as more particularly  
on the attached sheet.

- - Iron Pin Set
- △ - Gov't Corner Found



Scale: 1"=100'



I hereby certify this plat to be a true, correct,  
and complete representation of the property described  
above and on the attached sheet, as surveyed by me, this  
4th day of April, 1980.

*Daniel E. Garber*  
Daniel E. Garber RLS

