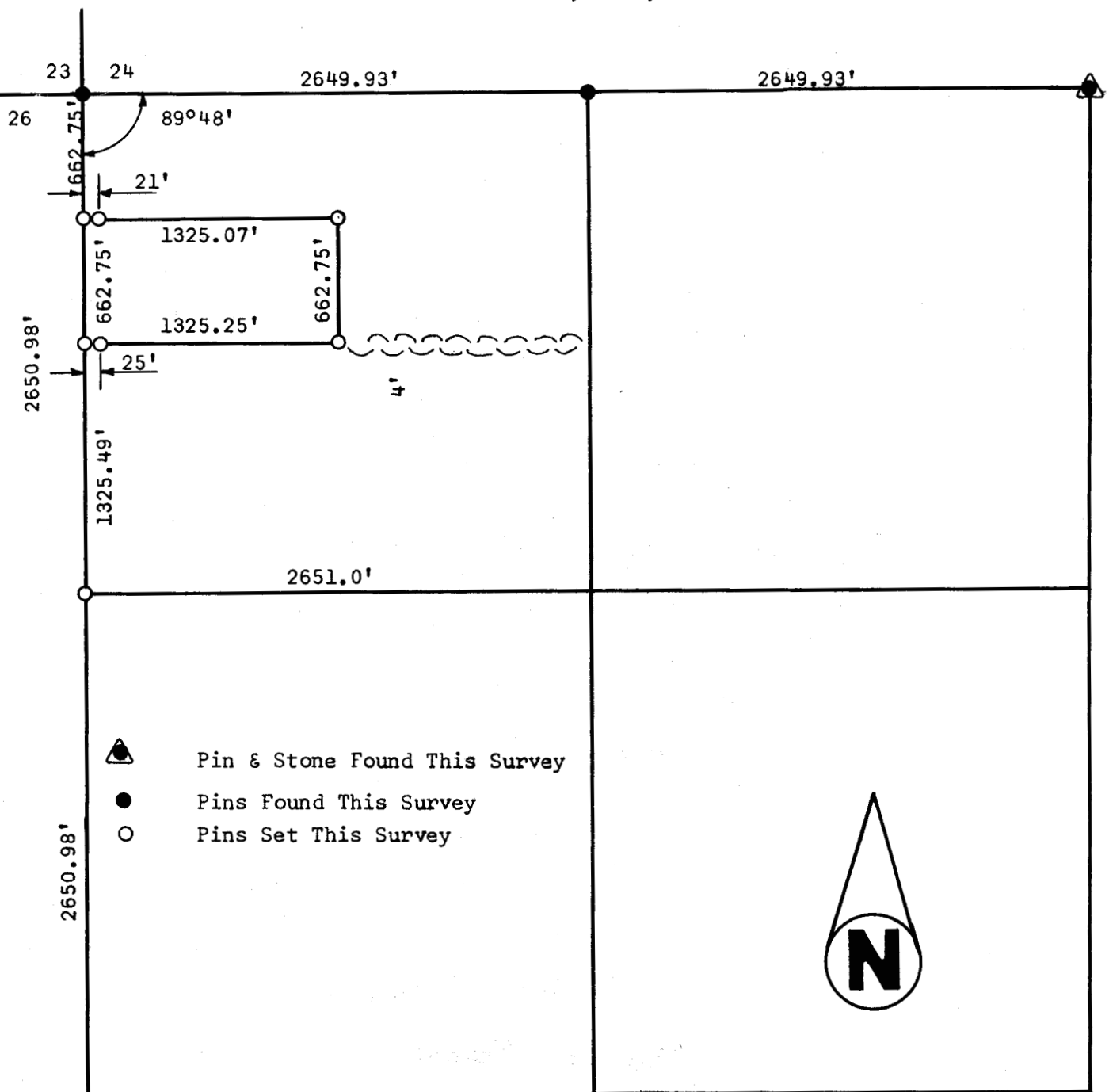


A SURVEY OF THE S 1/2, NW 1/4, NW 1/4
SECTION 25, T21S, R1W



State of Kansas) SS
County of McPherson)

I, Francis Rankin, County Engineer of McPherson County, Kansas, do hereby certify that under my supervision a survey was made of the S 1/2, NW 1/4, NW 1/4 Section 25, T21S, R1W of the 6th P.M., and described as follows: Commencing at the NW corner of said NW 1/4; thence South 662.75 feet to a point of beginning; thence East parallel with the North section line 1325.07 feet; thence south 662.75 feet; thence west 1325.25 feet; thence North 662.75 feet to the place of beginning and the above plat is a true exhibit of said survey as far as it is known to me.

Signed this 7 day of January, 1964.

Survey called for by Dan Schneider

Francis R. Rankin
Francis R. Rankin, County
Engineer, McPherson County
1964
KANSAS
PROFESSIONAL ENGINEER

MICROFILM