

- LEGEND**
- △ - Sectional Monument Found
 - ▲ - Section Monument Set (5/8\"/>

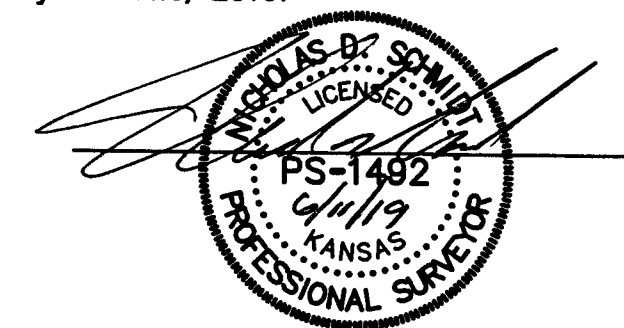
DESCRIPTION:

A portion of the West Half of the Southeast Quarter of Section 25, Township 20 South, Range 3 West of the 6th Principal Meridian, McPherson County, Kansas described as follows:

Beginning at the Southeast corner of said West Half, thence on a NAD 83 Kansas South Zone bearing of South 89°26'44\"/>

SURVEYOR'S CERTIFICATE:

I hereby certify this plat to be a true, correct and complete representation of the property described hereon, as surveyed under my supervision, this 11th day of June, 2019.



Prepared For:		Description:	
TERRY KOEHN		A PORTION OF THE SE 1/4 SECTION 25, T20S, R3W McPHERSON COUNTY, KANSAS	
Prepared By:		Garber Surveying Service, P.A.	
GSS		HUTCHINSON (Main Office) 2908 North Plum St. 67502 Ph. 620-665-7032 Fax 620-663-7401	
		McPHERSON (Branch Office) 115 East Marlin 67460 Ph. 620-241-4441 Fax 620-241-4438	
		NEWTON (Branch Office) 511 North Poplar St. 67114 Ph. 316-283-5053 Fax 316-283-5073	
		MANHATTAN (Branch Office) 3226 Kimball Ave Ste.#2 66503 Ph. 785-320-4810	
Drawn By:	KDZ	Scale:	1\"/>
Checked By:	NDS	Date:	06/11/2019
		Date of Field Work:	June 3, 2019
		Sheet	1 of 1 Sheet(s)
		Job No:	G2019-333