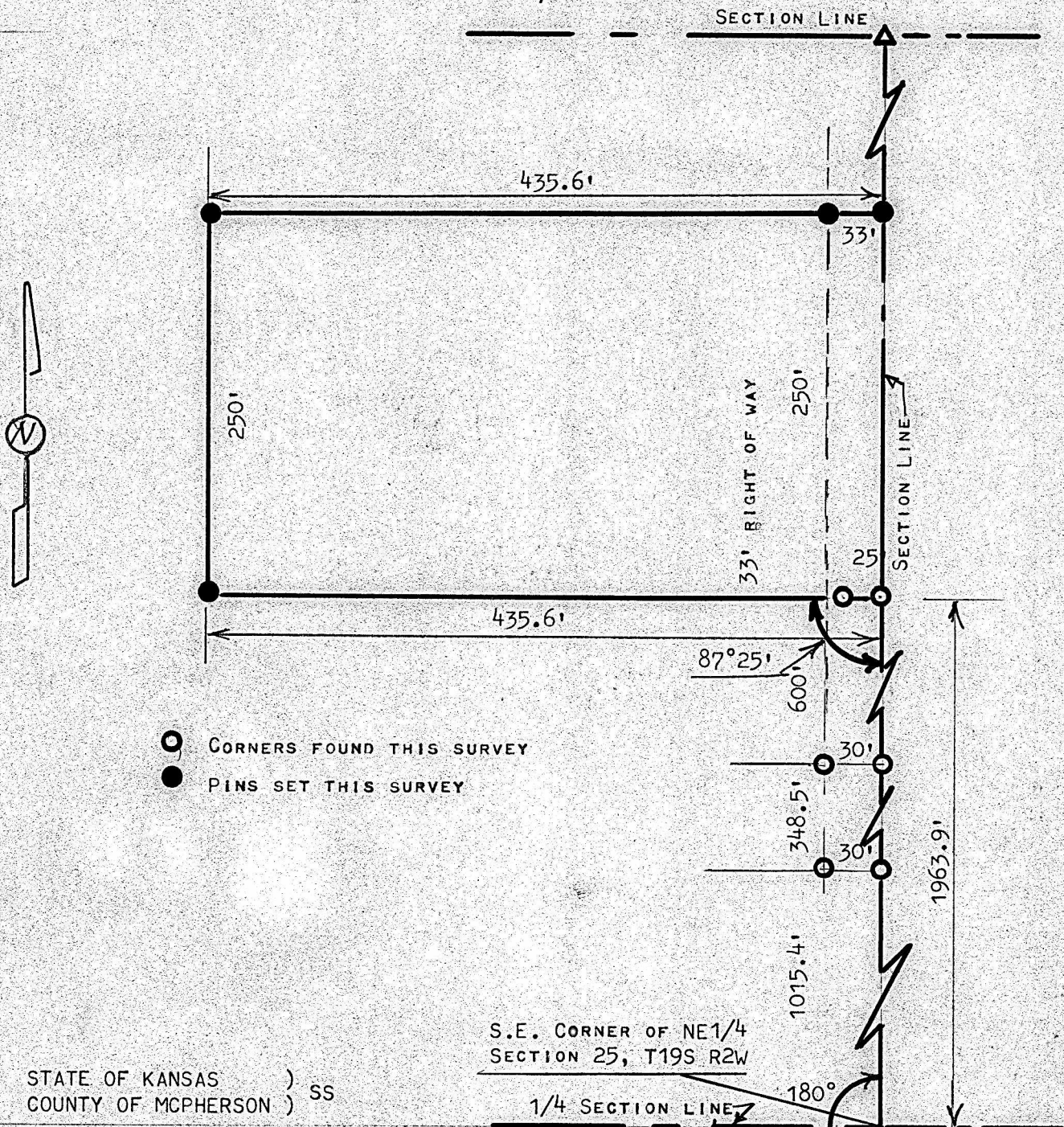


A SURVEY OF A TRACT OF LAND IN THE  
NE1/4, SECTION 25, T19S R2W  
MCIPHERSON COUNTY, KANSAS



I, MELVIN FERGUSON, PROFESSIONAL ENGINEER OF THE STATE OF KANSAS  
DO HEREBY CERTIFY THAT UNDER MY SUPERVISION A SURVEY WAS MADE IN THE NE1/4,  
OF SECTION 25, T19S R2W OF THE 6TH P.M. AND DESCRIBED AS FOLLOWS;  
BEGINNING 1963.9 FEET NORTH OF THE S.E. CORNER OF THE SAID NE1/4;  
THENCE WEST AT AN EXTERIOR ANGLE OF 87°25' A DISTANCE OF 435.6 FEET; THENCE  
NORTH PARALLEL WITH SECTION LINE 250 FEET; THENCE EAST TO SECTION LINE  
435.6 FEET; THENCE SOUTH ON SECTION LINE 250 FEET AND TO PLACE OF BEGINNING.  
THE LAND HEREIN DESCRIBED CONTAINS 2.5 ACRES MORE OR LESS AND THE ABOVE  
PLAT IS A TRUE EXHIBIT OF SAID SURVEY AS FAR AS IT IS KNOWN TO ME.

SURVEY CALLED FOR BY DAVID PLILER

SIGNED THIS DAY OF APRIL 16<sup>th</sup> 1980

MELVIN FERGUSON  
PROFESSIONAL ENGINEER  
MCIPHERSON, KANSAS

