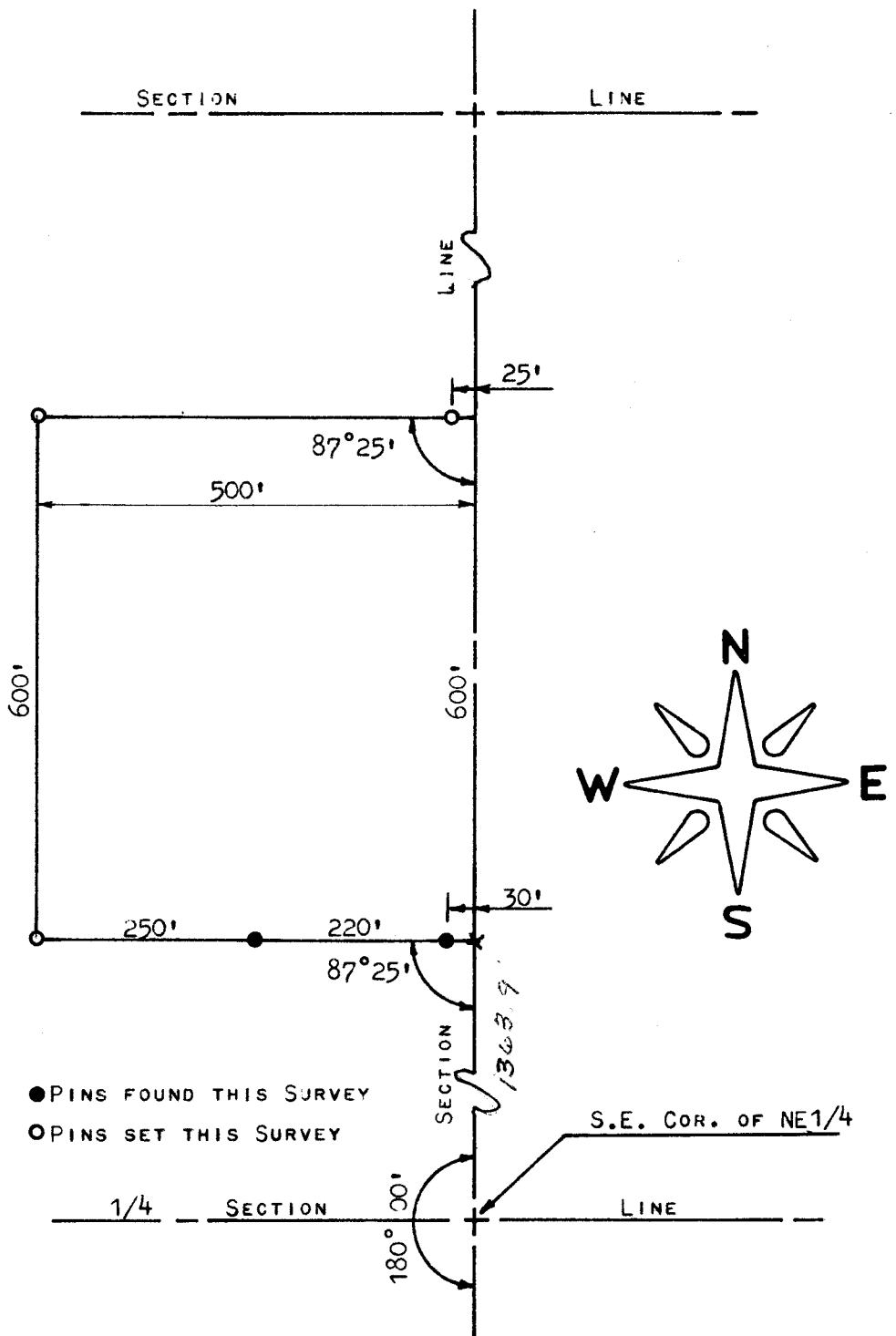


A SURVEY OF A TRACT OF LAND IN THE

NE1/4, SECTION 25, T19S - R2W

McPHERSON, COUNTY KS.



STATE OF KANSAS)
COUNTY OF McPHERSON)^{SS}

I, FRANCIS RANKIN, COUNTY ENGINEER OF McPHERSON COUNTY, KANSAS, DO HEREBY CERTIFY THAT UNDER MY SUPERVISION A SURVEY WAS MADE IN THE NE1/4 OF SECTION 25, T19S - R2W OF THE 6TH P.M. AND DESCRIBED AS FOLLOWS:

BEGINNING 1363.9 FEET NORTH OF THE S.E. CORNER OF THE SAID NE1/4; THENCE WEST AT AN EXTERIOR ANGLE OF 87°25' A DISTANCE OF 500 FEET; THENCE NORTH PARALLEL WITH THE SECTION LINE 600 FEET; THENCE EAST TO SECTION LINE 500 FEET; THENCE SOUTH ON SECTION LINE 600 FEET TO THE PLACE OF BEGINNING.

THE LAND HEREIN DESCRIBED CONTAINS 6.9 ACRES MORE OR LESS AND THE ABOVE PLAT IS A TRUE EXHIBIT OF SAID SURVEY AS FAR AS IT IS KNOWN TO ME.

SURVEY CALLED FOR BY CHARLES McMANNIS

SIGNED THIS 7 DAY OF APRIL, 1970.

F. R. RANKIN
COUNTY ENGINEER
McPHERSON CO., KANSAS



McPHERSON