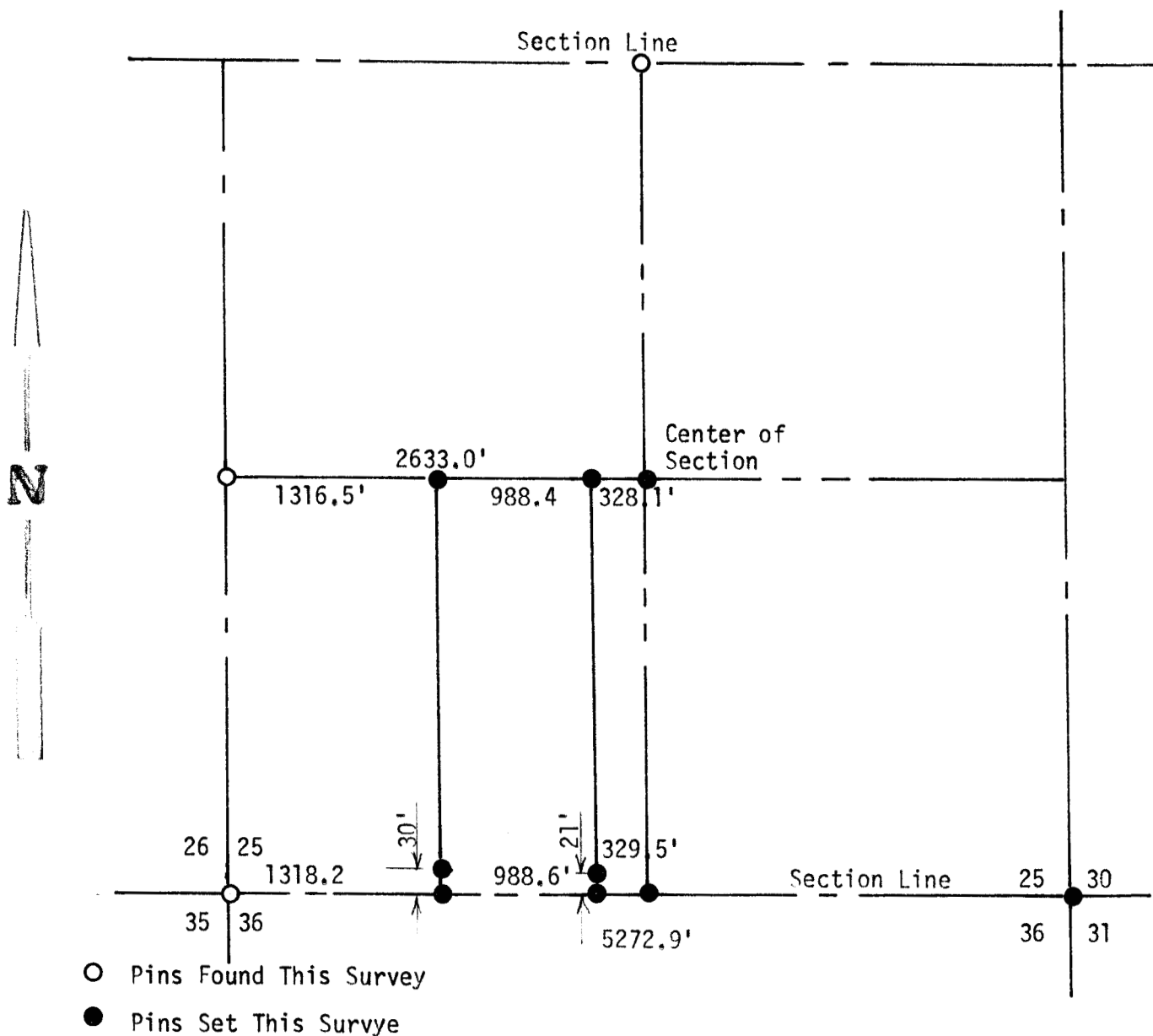


A SURVEY OF THE
SW 1/4 SECTION 25, T18S, R5W
MC PHERSON COUNTY, KANSAS



State of Kansas)
County of McPherson) SS

I, F. R. Rankin, County Engineer of McPherson County, Kansas, do hereby certify that under my supervision a survey was made of the West line of the W 1/2, E 1/2, SW 1/4 and the East line of the W 1/2, E 1/2, SW 1/4 Section 25, T18S, R5W of the 6th P.M. The above plat is a true exhibit of said survey as far as it is known to me.

Survey called for by Leaman T. Miller

Signed on this 8 day of August, 1973

F. R. Rankin
F. R. Rankin, P. E.
Director of P.W & County Engineer
McPherson County, Kansas

