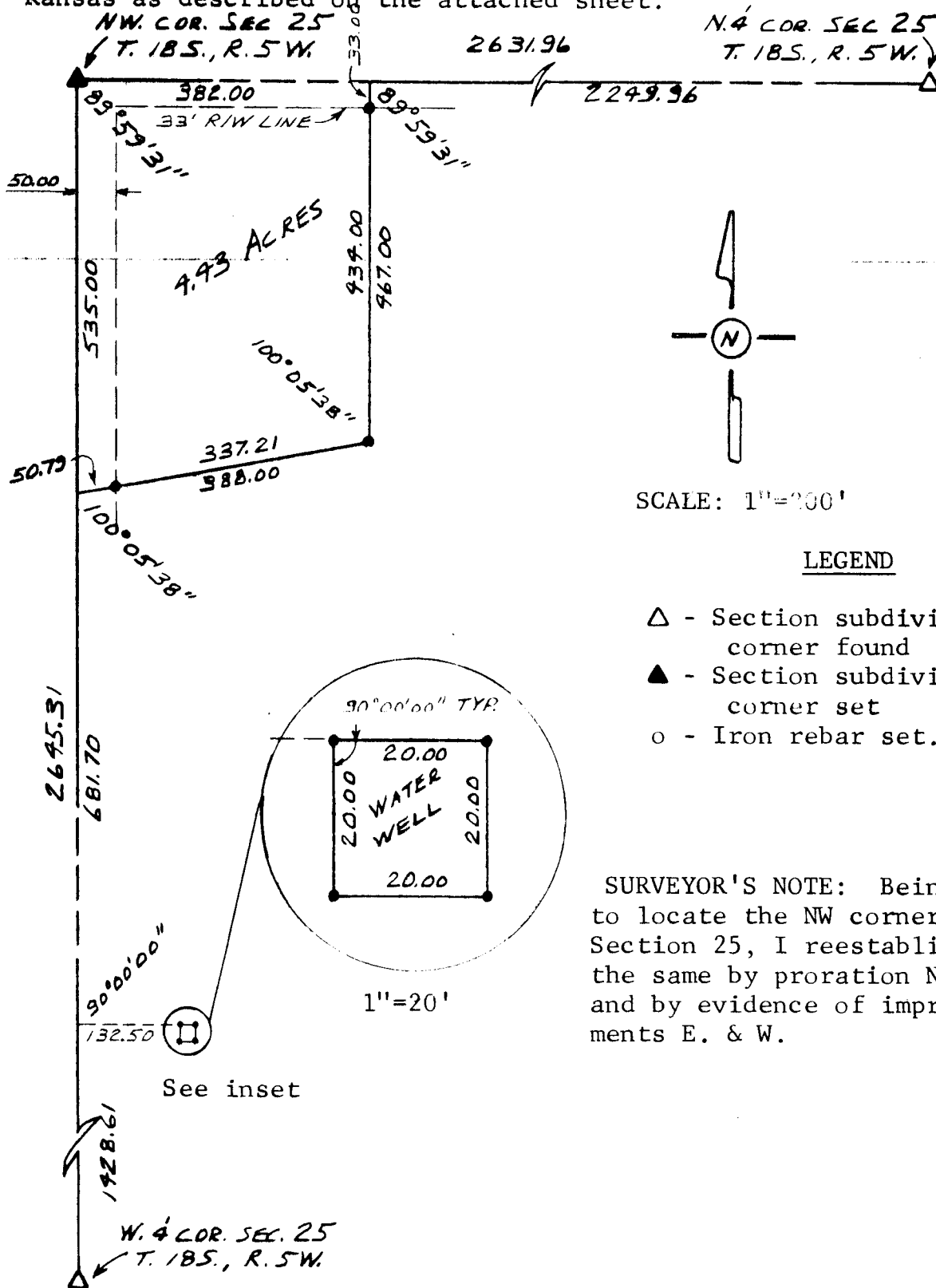


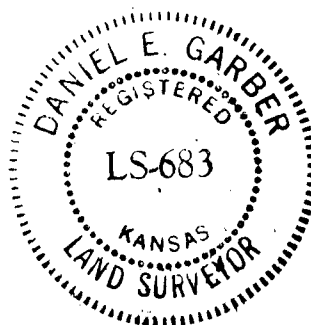
Survey for: Robert Kroeker
 By: Garber Surveying Service, P.A.
 217 East First Avenue, Suite 9
 Hutchinson, Kansas 67501

DESCRIPTION: A part of the NW $\frac{1}{4}$ of Section 25, Township 18 South, Range 5 West of the 6th Principal Meridian in McPherson County, Kansas as described on the attached sheet.



I hereby certify this plat to be a true, correct and complete representation of the property described above and on the attached sheet, as surveyed by me, this 28th day of October, 1982

Daniel E. Garber
 Daniel E. Garber RLS



G82-137