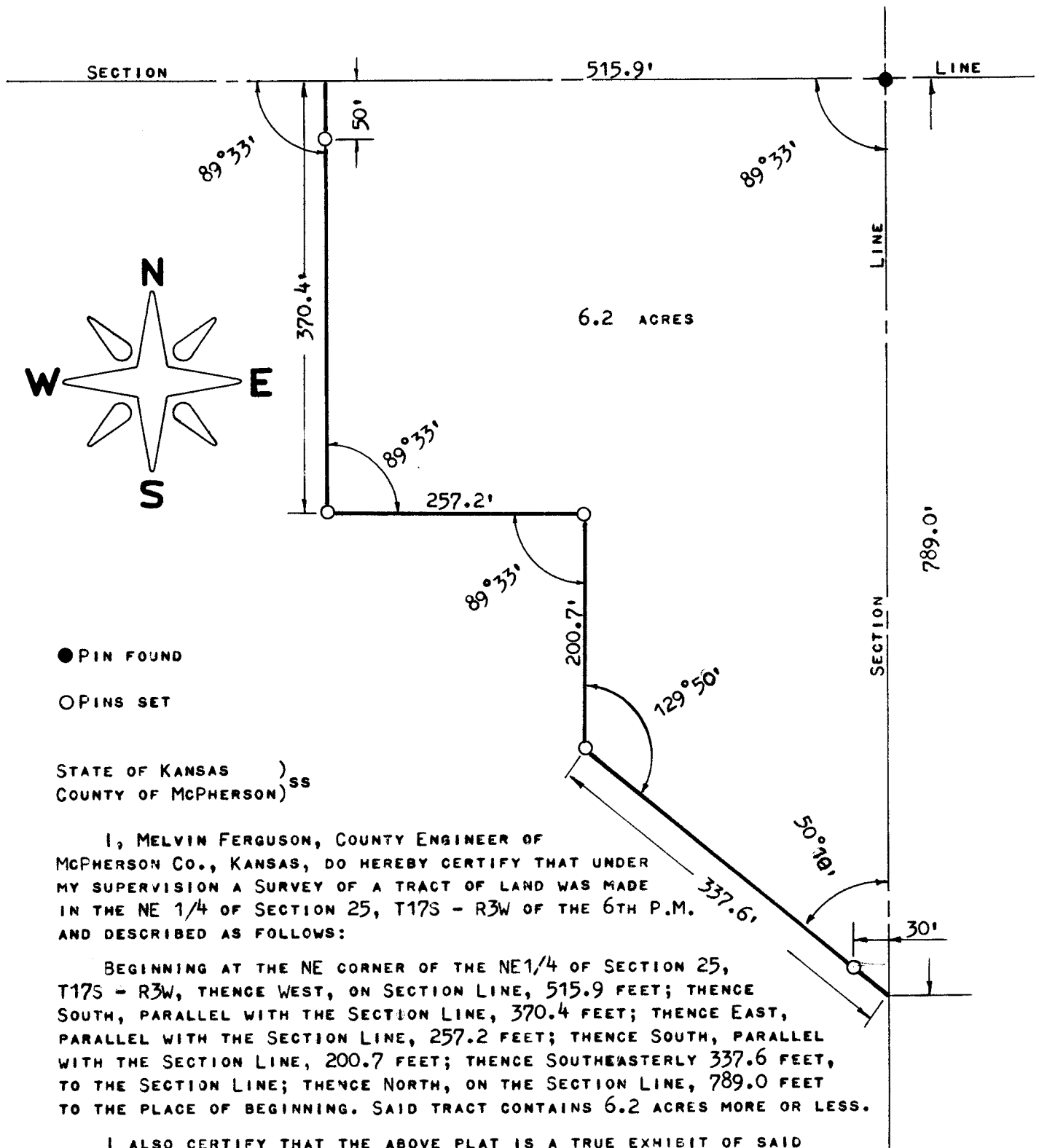


A SURVEY IN THE NE 1/4 OF SECTION 25,

T17S - R3W

McPHERSON CO., KANSAS



SURVEY CALLED FOR BY MILO JOHNSON.

SIGNED ON THIS 29<sup>th</sup> DAY OF OCTOBER, 1974.

*Melvin Ferguson*  
MELVIN FERGUSON

COUNTY ENGINEER

McPHERSON CO., KANSAS

