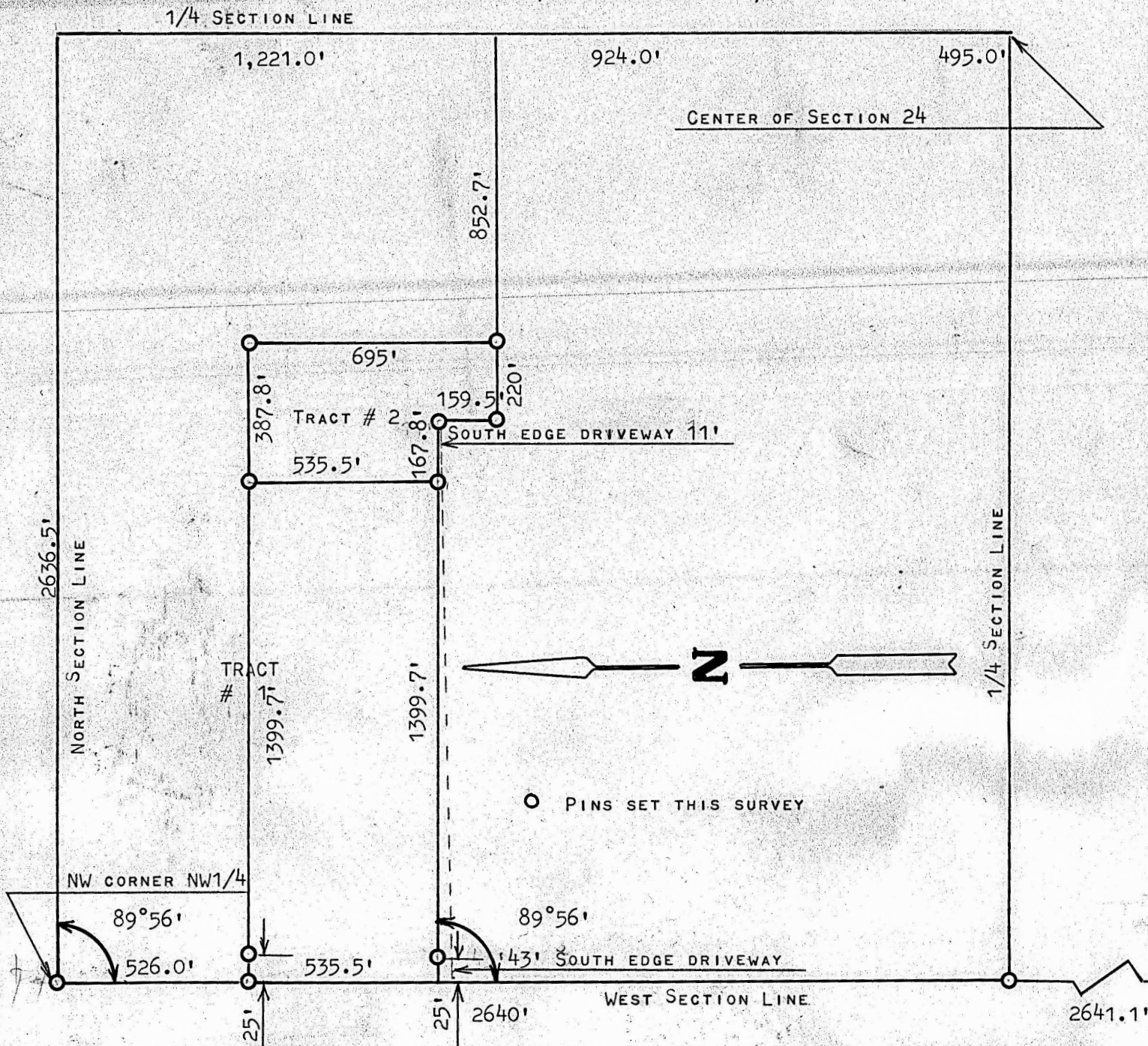


SURVEY TRACT OF LAND IN THE NW1/4, SECTION 24

T21S - R4W, MCPHERSON COUNTY, KANSAS



STATE OF KANSAS )  
COUNTY OF MCPHERSON) SS

I, FRANCIS RANKIN, LICENSED PROFESSIONAL ENGINEER OF THE STATE OF KANSAS DO HEREBY CERTIFY THAT UNDER MY SUPERVISION A SURVEY WAS MADE IN THE NW1/4, SECTION 24, T21S - R4W, OF THE 6TH P.M. AND DESCRIBED AS FOLLOWS:

TRACT # 1

BEGINNING AT THE NW CORNER OF SAID NW1/4, SECTION 24, T21S-R4W; THENCE SOUTH 1061.5 FEET; THENCE EAST PARALLEL WITH NORTH SECTION LINE 1567.5 FEET; THENCE SOUTH PARALLEL WITH WEST SECTION LINE 159.5 FEET; THENCE EAST PARALLEL WITH NORTH SECTION LINE 1072.5 FEET AND TO THE 1/4 SECTION LINE; THENCE NORTH ON 1/4 SECTION LINE 1,221.0 FEET TO SECTION LINE; THENCE WEST ON SECTION LINE 2636.5 FEET TO PLACE OF BEGINNING, SAID TRACT OF LAND CONTAINS 68.2 ACRES MORE OR LESS.

TRACT # 2

BEGINNING 1061.5 FEET SOUTH AND 1399.7 FEET EAST OF THE NW CORNER OF SAID NW1/4, SECTION 24, T21S R4W; THENCE EAST PARALLEL WITH NORTH SECTION LINE 167.8 FEET; THENCE SOUTH PARALLEL WITH WEST SECTION LINE 159.5 FEET; THENCE EAST PARALLEL WITH NORTH SECTION LINE 220.0 FEET; THENCE NORTH PARALLEL WITH WEST SECTION LINE 695.0 FEET; THENCE WEST PARALLEL WITH NORTH SECTION LINE 387.8 FEET; THENCE SOUTH 535.5 FEET TO PLACE OF BEGINNING SAID TRACT OF LAND CONTAINS 5.6 ACRES MORE OR LESS, AND THAT THE ACCOMPANYING PLAT IS A TRUE EXHIBIT OF SAID SURVEY AS FAR AS IT IS KNOWN TO ME.

SURVEY CALLED FOR BY VIRGIL REGEHR

SIGNED THIS 26 DAY OF AUGUST, 1968



FRANCIS RANKIN  
PROFESSIONAL ENGINEER  
MCPHERSON, KANSAS