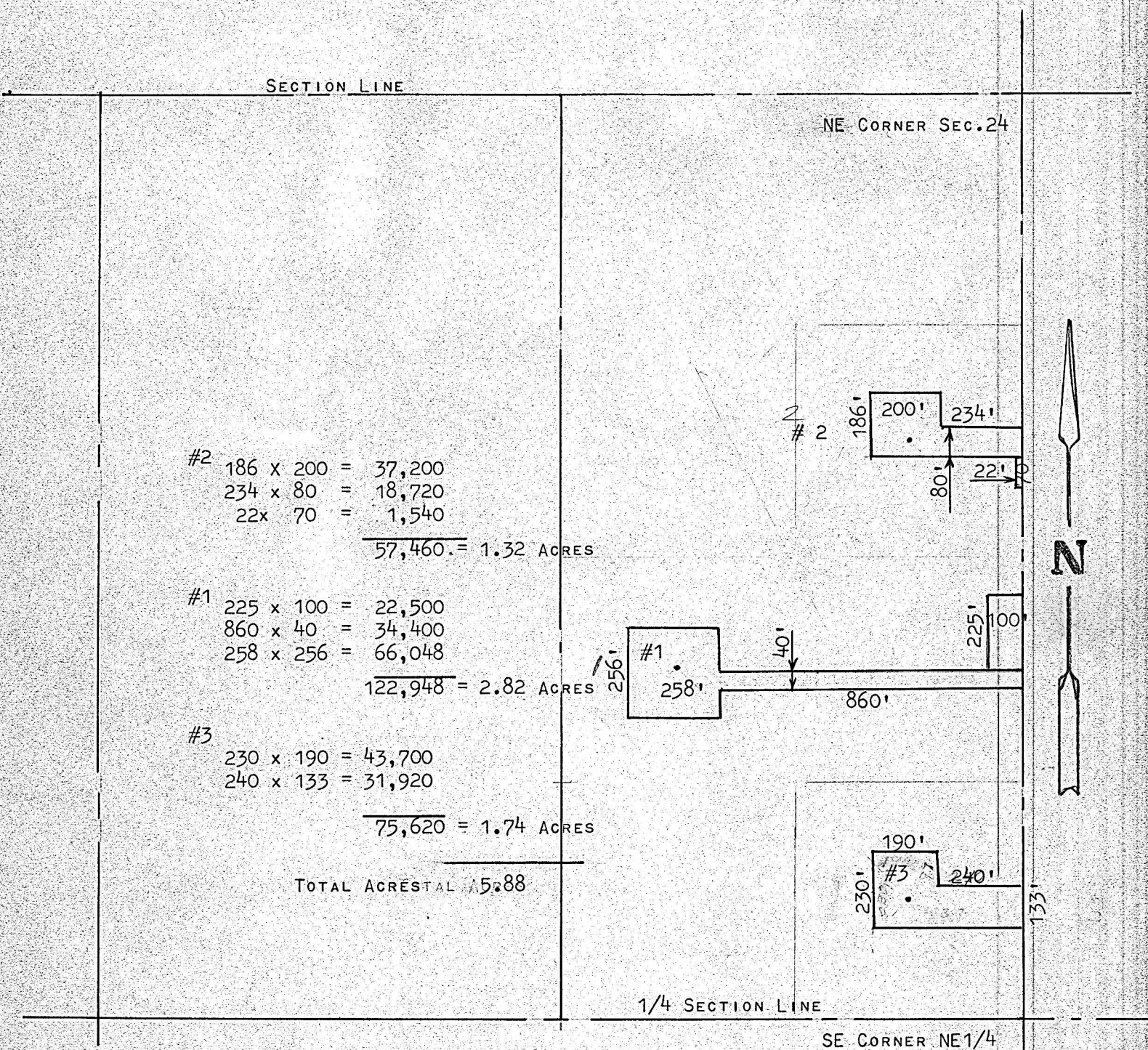


A SURVEY IN THE EAST HALF OF THE NE 1/4
SECTION 24, T21S R2W, MCPHERSON, COUNTY
KANSAS



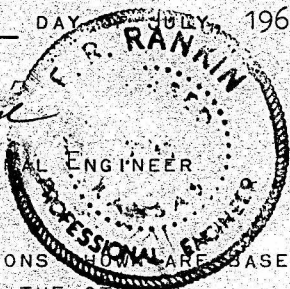
STATE OF KANSAS)
COUNTY OF MCPHERSON) SS

I, FRANCIS RANKIN., PROFESSIONAL AND COUNTY ENGINEER OF THE STATE OF KANSAS, DO HEREBY CERTIFY THAT UNDER MY SUPERVISION A SURVEY WAS MADE IN THE EAST HALF OF THE NE1/4 SECTION 24, T21S R2W OF THE 6TH P.M. TO DETERMINE THE NUMBER OF ACRES DAMAGE AROUND EACH OIL WELL, AND THAT THE ACCOMPANYING PLAT IS A TRUE EXHIBIT OF SAID SURVEY AS FAR AS IT IS KNOWN TO ME.

SURVEY CALLED FOR BY MAX TOWNSEND

SIGNED THIS 29 DAY OF JULY, 1969

Francis Rankin
FRANCIS RANKIN
COUNTY & PROFESSIONAL ENGINEER
MCPHERSON, KANSAS



MICROFILM

NOTE: THE DIMENSIONS SHOWN ARE BASED ON THE AVERAGE DISTANCE FROM ONE SIDE TO THE OTHER.