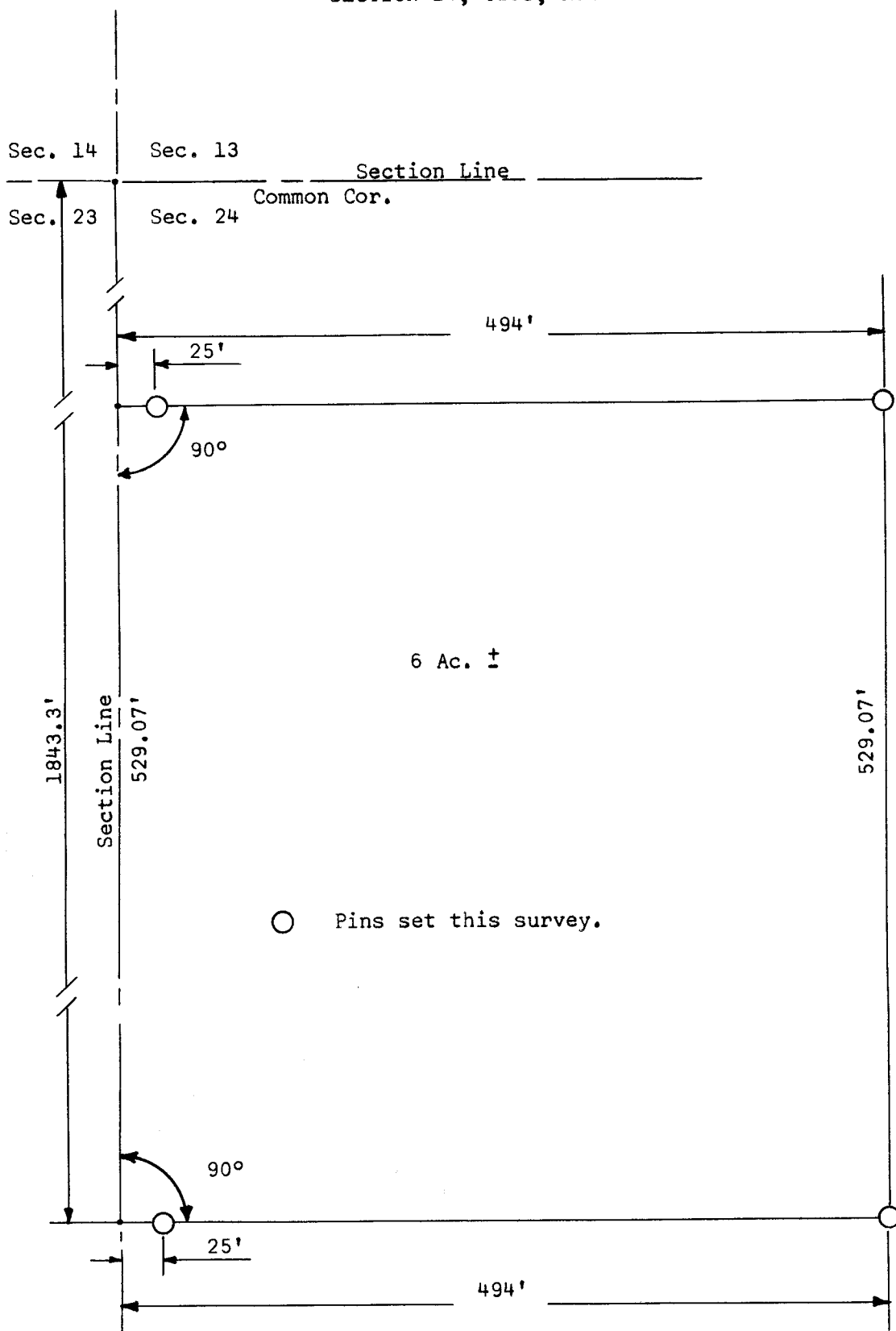


A SURVEY IN THE NW1/4 OF  
SECTION 24, T20S, R3W



State of Kansas      ) SS  
County of McPherson)

I, Francis Rankin, County Engineer of McPherson County, Kansas, do hereby certify that I did cause to be done on the 20th day of August, 1962 a survey in the NW 1/4 of Section 24, T20S, R3W of the 6th P.M. described as follows:

Beginning at a point 1843.3 feet south of the NW corner Section 24, T20S, R3W,; thence east, at an angle of 90 degrees 494 feet; thence north, parallel with the west section line, 529.07 feet; thence west 494 feet to section line; thence south along west section line 529.07 feet to place of beginning, said tract containing 6.0 acres more or less, and that the accompanying plat is a true exhibit of said survey as far as it is known to me.

21, August, 1962

*Francis Rankin*  
Francis Rankin  
County Engineer  
McPherson County

