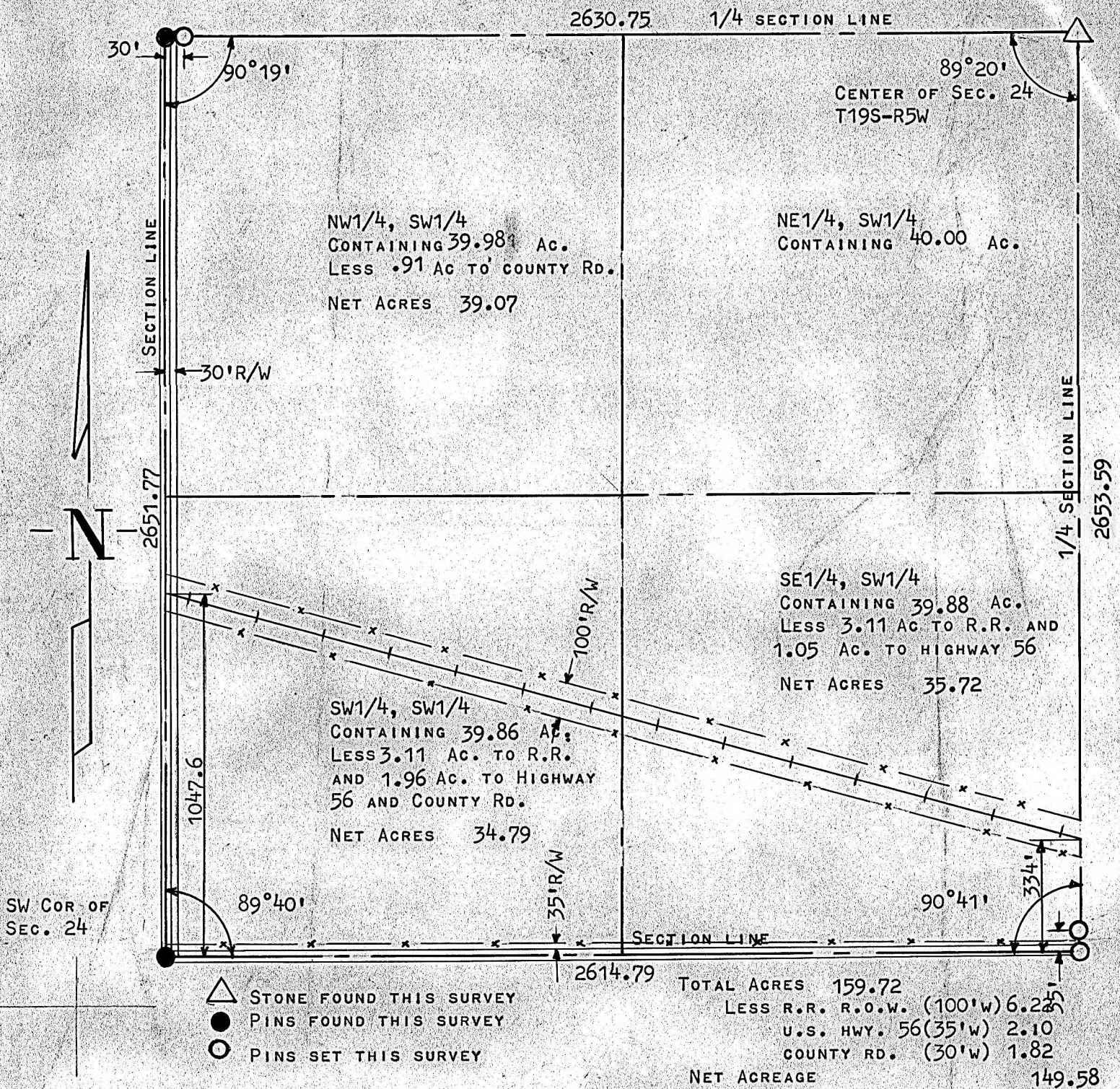


A SURVEY OF THE SW1/4
OF SECTION 24-T19S-R5W



STATE OF KANSAS)
COUNTY OF McPHERSON) SS

I, FRANCIS RANKIN, PROFESSIONAL ENGINEER, DO HEREBY CERTIFY THAT I DID CAUSE TO BE DONE ON THE 3RD DAY OF MARCH, 1962, A SURVEY OF THE SW1/4 OF SECTION 24-T19S-R5W OF THE 6TH PRINCIPAL MERIDIAN, AND THAT THE ACCOMPANYING PLAT IS A TRUE EXHIBIT OF SAID SURVEY AS FAR AS IT IS KNOWN TO ME.

Francis Rankin
FRANCIS RANKIN
PROFESSIONAL ENGINEER