



Garber Surveying Service, P.A.

423 West 1st Ave.
Hutchinson, Kansas 67501

Phone 620 665-7032 • FAX 620 663-7401

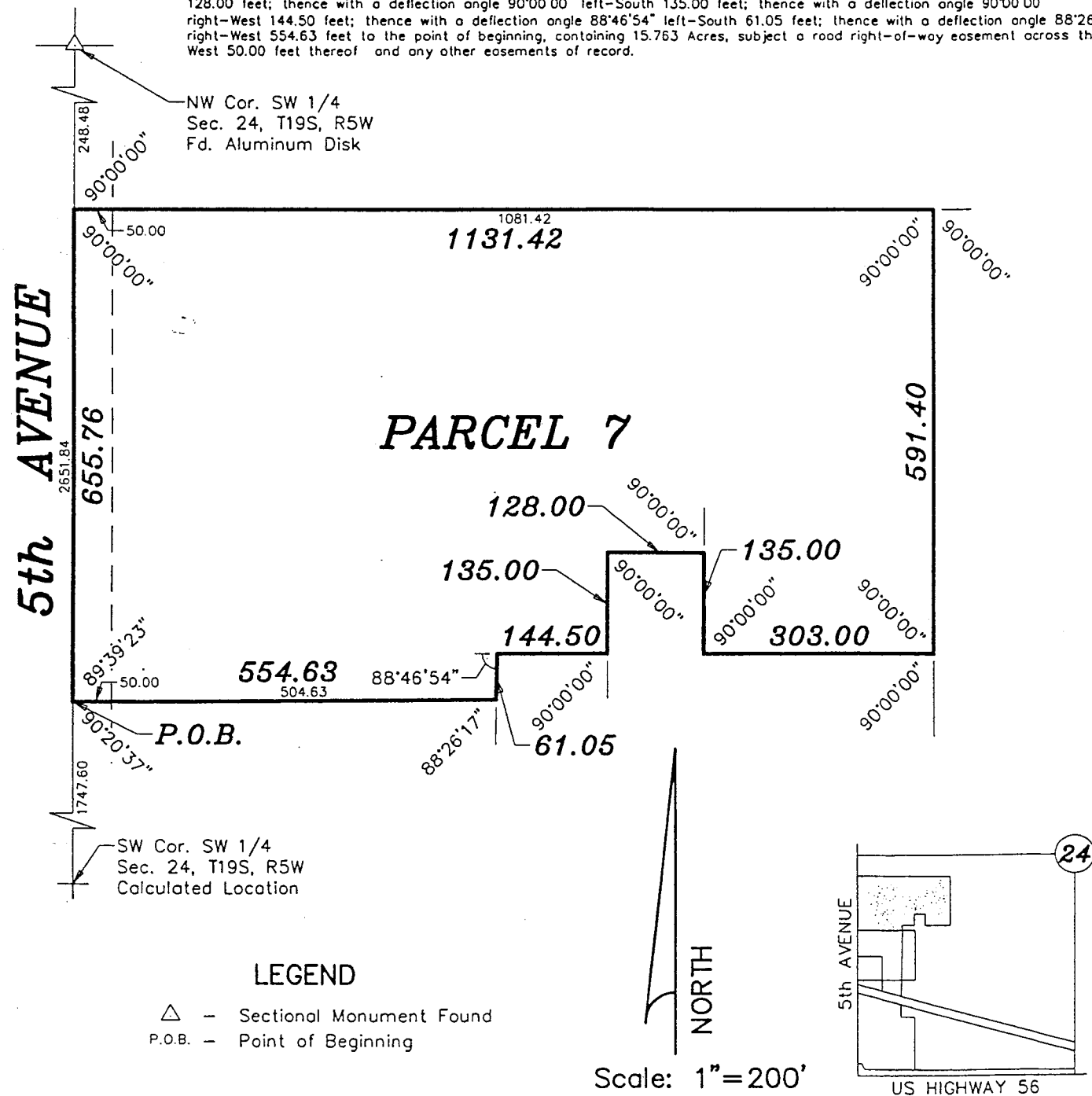
129 E. Broadway, Suite 300
Newton, Kansas 67114

Phone 316 283-5053 • FAX 316 283-5073

Project No. 2002-885

SURVEY FOR: ENTERPRISE PRODUCTS

DESCRIPTION: A portion of the Southwest Quarter of Section 24, Township 19 South, Range 5 West of the 6th Principal Meridian, McPherson County, Kansas described as follows:
Commencing at the Southwest corner of said Southwest Quarter; thence North along the West line of said Southwest Quarter 1747.60 feet for the point of beginning; thence continuing North along the West line of said Southwest Quarter 655.76 feet; thence with a deflection angle 90°00'00" right-East 1131.42 feet; thence with a deflection angle 90°00'00" right-South parallel with the West line of said Southwest Quarter 591.40 feet; thence with a deflection angle 90°00'00" right-West 303.00 feet; thence with a deflection angle 90°00'00" right-North 135.00 feet; thence with a deflection angle 90°00'00" left-South 128.00 feet; thence with a deflection angle 90°00'00" left-South 135.00 feet; thence with a deflection angle 90°00'00" right-West 144.50 feet; thence with a deflection angle 88°46'54" left-South 61.05 feet; thence with a deflection angle 88°26'17" right-West 554.63 feet to the point of beginning, containing 15.763 Acres, subject a road right-of-way easement across the West 50.00 feet thereof and any other easements of record.



SURVEYOR'S CERTIFICATE:

I hereby certify this plat to be a true, correct and complete representation of the property described above as surveyed under my supervision.
Dated: January 24, 2003