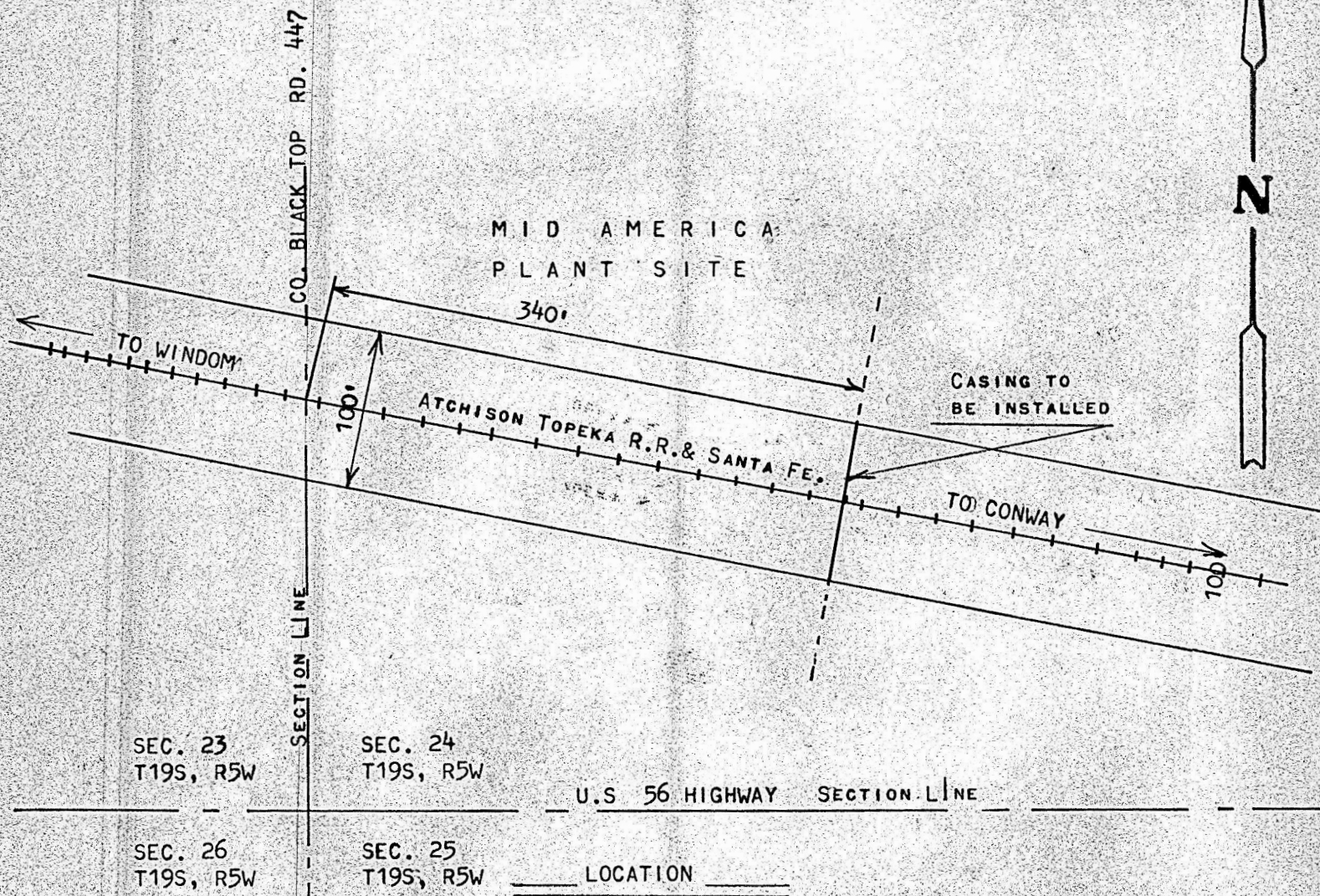
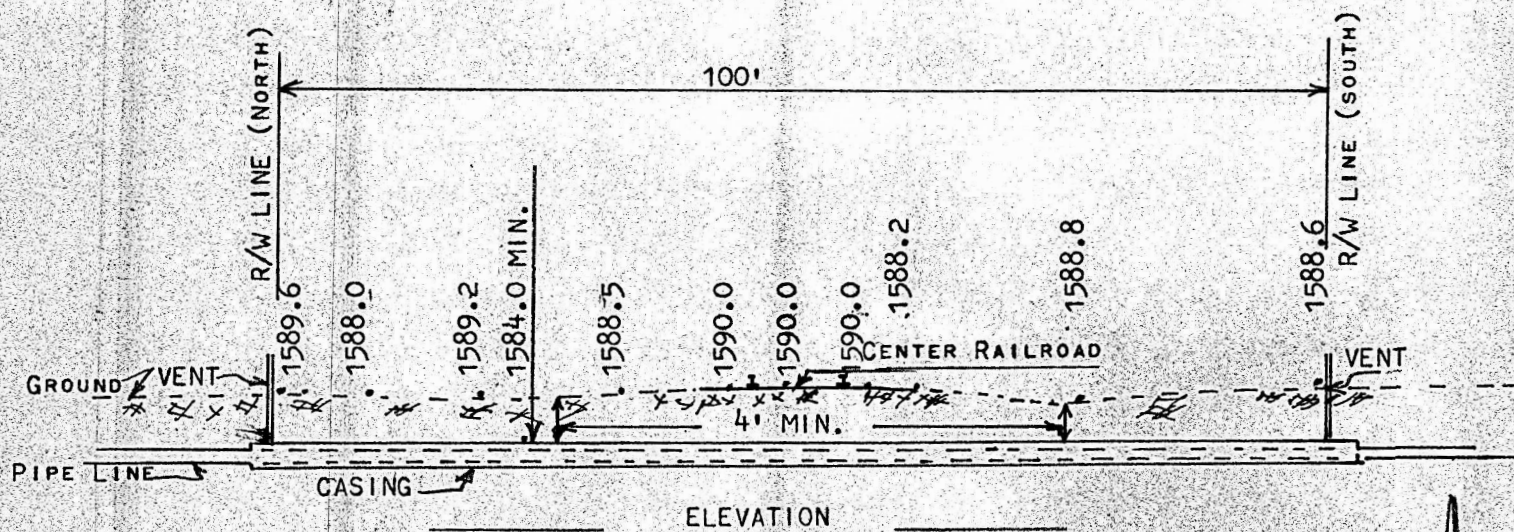


RAILROAD CROSSING FOR
MID-AMERICA PIPE LINE
MCPHERSON, COUNTY
KANSAS



MCPHERSON COUNTY, KANSAS
FRANCIS RANKIN, PROFESSIONAL ENGINEER

RAILROAD CROSSING FOR MID-AMERICA
PIPE LINE IN SECTION 24, T19S, R5W
CONWAY, KANSAS

NOVEMBER 27, 1972

MICROFILM