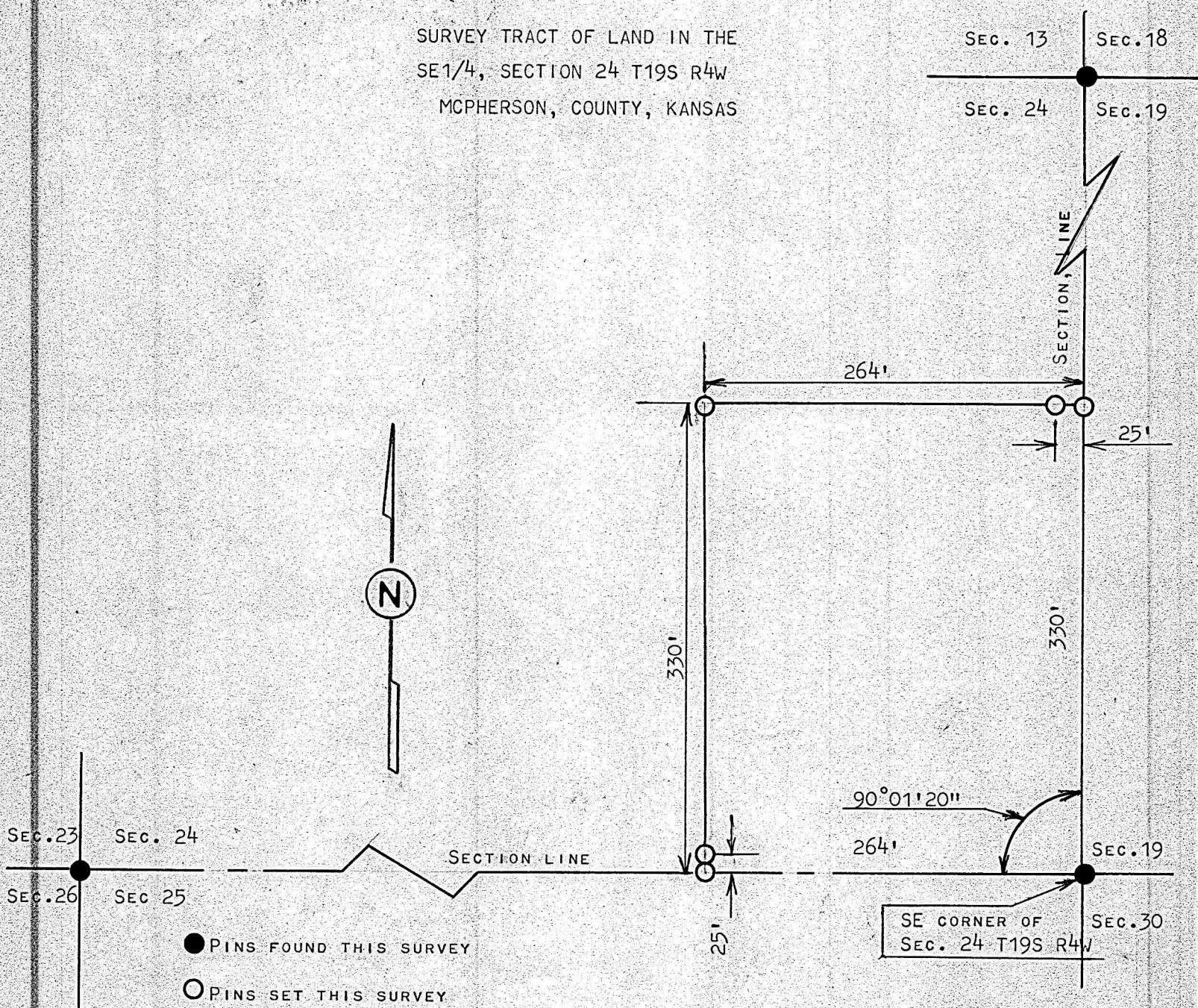


SEC. 13      SEC. 18

SEC. 24      SEC. 19



I, FRANCIS RANKIN, PROFESSIONAL ENGINEER OF THE STATE OF KANSAS DO HEREBY CERTIFY THAT UNDER MY SUPERVISION A SURVEY WAS MADE IN THE SE1/4 SECTION 24 T19S R4W OF THE 6TH P.M. AND DESCRIBED AS FOLLOWS;

SURVEY CALLED FOR BY WILLIAM ANDREAS

*FRANKIN*  
FRANCIS R. RANKIN  
PROFESSIONAL ENGINEER  
McPHERSON, KANSAS



A circular professional engineer seal for the State of Kansas. The outer ring contains the text "R. RANKIN" at the top and "PROFESSIONAL ENGINEER" at the bottom. Inside the ring, the word "LICENSED" is at the top, the number "799" is in the center, and "KANSAS" is at the bottom. The seal is partially overlapping the text of the business card.

**MICROFILM**