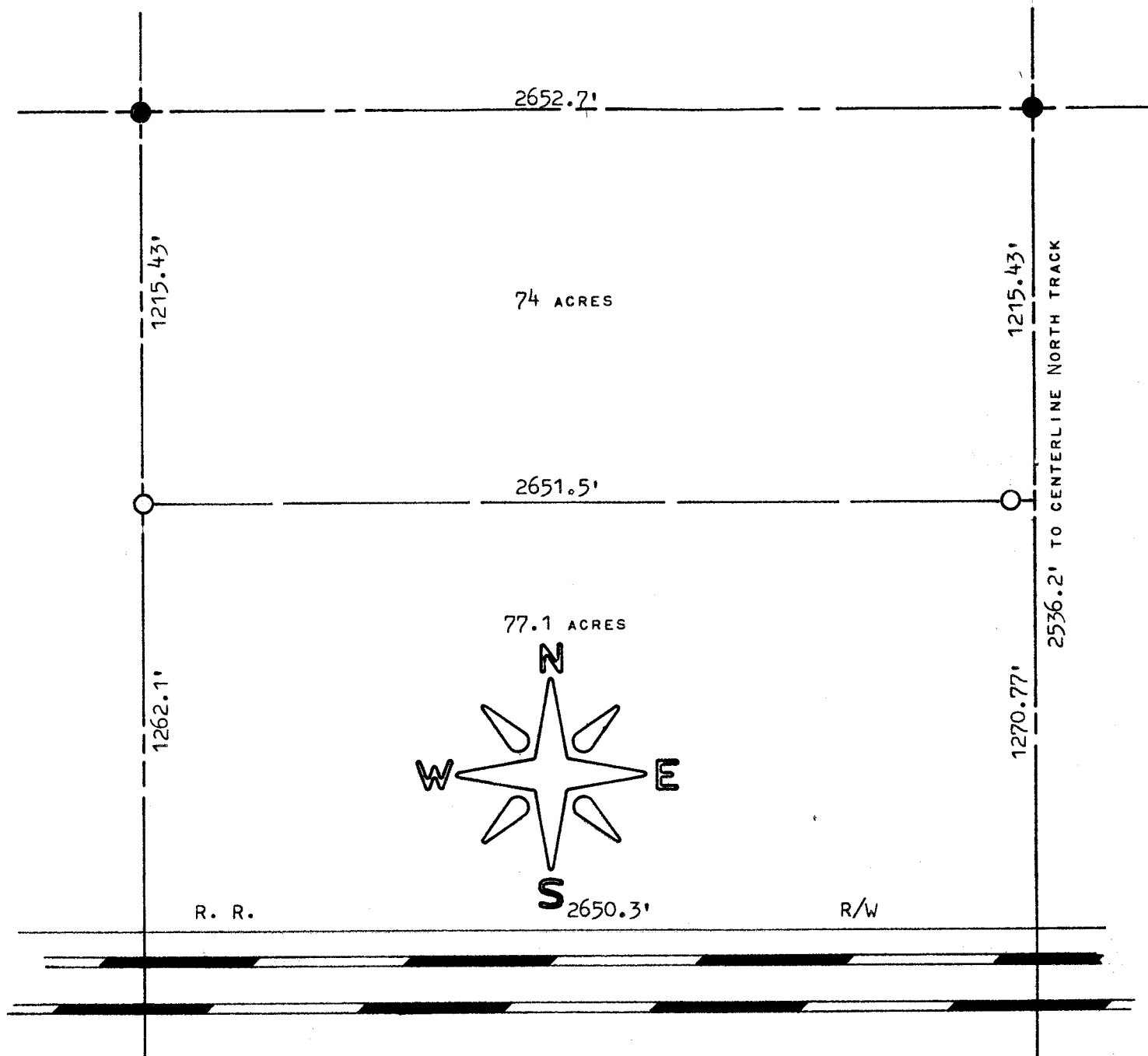


A SURVEY IN THE NE1/4 OF SECTION 24  
TOWNSHIP 19 SOUTH, RANGE 2 WEST



STATE OF KANSAS )  
COUNTY OF McPHERSON )  
SS

I, F. R. RANKIN, COUNTY ENGINEER OF McPHERSON CO., KANSAS, DO HEREBY CERTIFY THAT UNDER MY SUPERVISION A SURVEY WAS MADE OF THE NORTH 74 ACRES IN THE NE1/4 OF SECTION 24, T19S - R2W OF THE 6TH P.M. AND THE ABOVE PLAT IS A TRUE EXHIBIT OF SAID SURVEY AS FAR AS IT IS KNOWN TO ME.