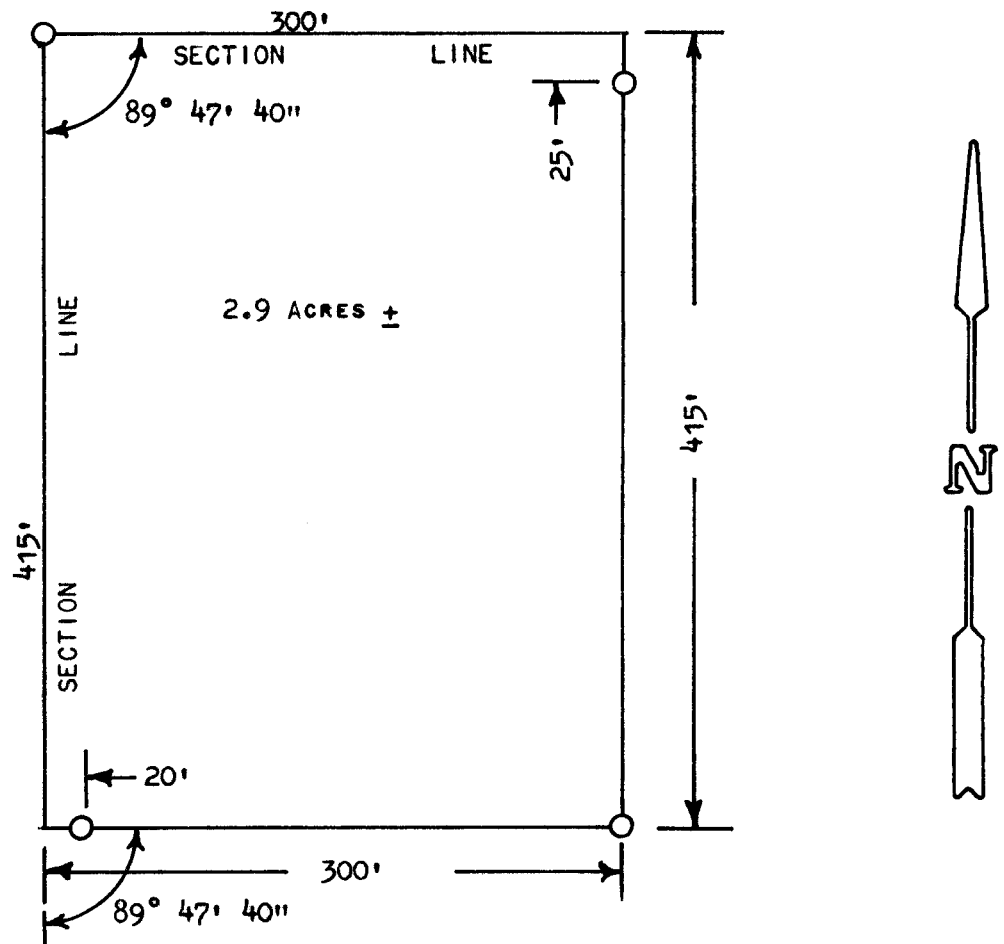


A SURVEY OF A TRACT OF LAND IN THE NW  $\frac{1}{4}$ ,  
SECTION 24, T19S, R1W,  
MCIPHERSON COUNTY, KANSAS



○ PINS SET THIS SURVEY

STATE OF KANSAS )  
COUNTY OF MCPHERSON ) SS

I, MELVIN FERGUSON, COUNTY ENGINEER OF MCPHERSON COUNTY, KANSAS, DO HEREBY CERTIFY THAT UNDER MY SUPERVISION A SURVEY WAS MADE OF A TRACT OF LAND IN THE NW  $\frac{1}{4}$  OF SECTION 24, T19S, R1W, OF THE 6TH P.M., AND DESCRIBED AS FOLLOWS:

BEGINNING AT THE NW CORNER OF SAID SECTION 24, T19S-R1W; THENCE EAST ON SECTION LINE 300 FEET; THENCE SOUTH, PARALLEL WITH SECTION LINE, 415 FEET; THENCE WEST, PARALLEL WITH SECTION LINE, 300 FEET; THENCE NORTH, ON SECTION LINE, 415 FEET, TO POINT OF BEGINNING. SAID TRACT CONTAINS 2.9 ACRES, MORE OR LESS.

I ALSO CERTIFY THAT THE ABOVE PLAT IS A TRUE EXHIBIT OF SAID SURVEY AS FAR AS IT IS KNOWN TO ME.

SURVEY CALLED FOR BY DARRYL LEFFLER.

SIGNED THIS 27<sup>th</sup> DAY OF JULY, 1974.

MELVIN FERGUSON  
COUNTY ENGINEER  
MCPHERSON COUNTY, KANSAS

