

Garber Surveying Service, P.A.



2908 North Plum St.  
Hutchinson, Kansas 67502  
Phone 620 665-7032 • FAX 620 663-7401

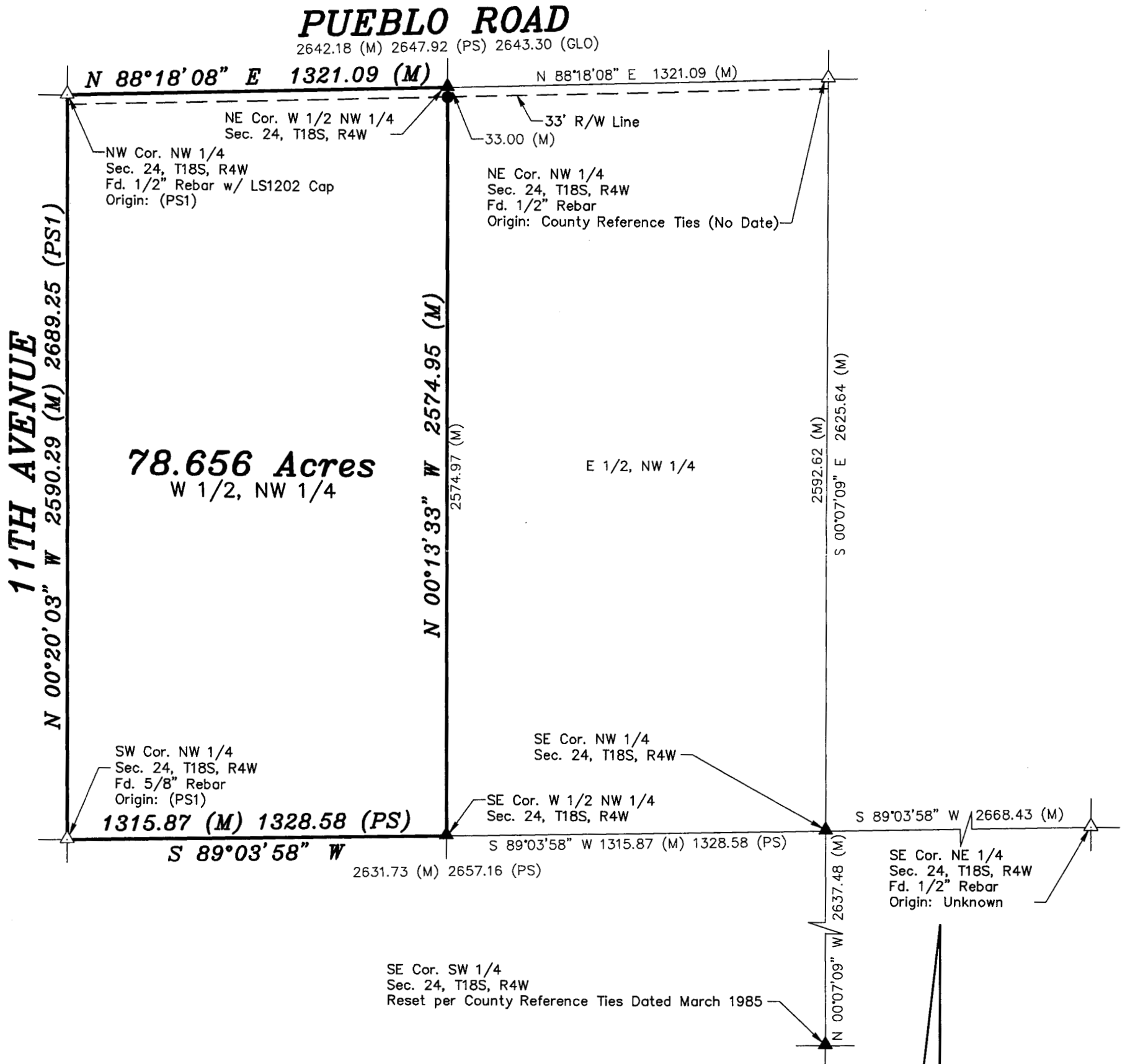
511 North Poplar St.  
Newton, Kansas 67114  
Phone 316 283-5053 • FAX 316 283-5073

115 East Marlin  
McPherson, Kansas 67460  
Phone 620 241-4441 • FAX 620 241-4458

SURVEY FOR: HAL SMITH

Project No. G2017-676

DESCRIPTION: The West half of the Northwest Quarter of Section 24, Township 18, Range 4 West of the 6th Principal Meridian, McPherson County, Kansas.



LEGEND

- △ - Sectional Monument Found
- ▲ - Section Monument Set (5/8" x 24" Iron Rebar w/G.S.S. Cap)
- - 5/8" x 24" Iron Rebar Set w/G.S.S. Cap
- (M) - Measured
- (PS) - Previous Survey by Joshua Leonard, April 26, 1878
- (PS1) - Previous Survey: GSS Project #G2014-491
- (GLO) - General Land Office

DATE OF FIELD WORK: October 23, 2017

SURVEYOR'S CERTIFICATE:

I hereby certify this plat to be a true, correct and complete representation of the property described above as surveyed under my supervision.  
Dated: October 31, 2017

Copyright © 2017 Garber Surveying Service, P.A.

Nicholas D. Schmidt LS #1492

Scale: 1"=400'  
BASIS OF BEARING  
= NAD 83 KANSAS  
SOUTH ZONE

NORTH