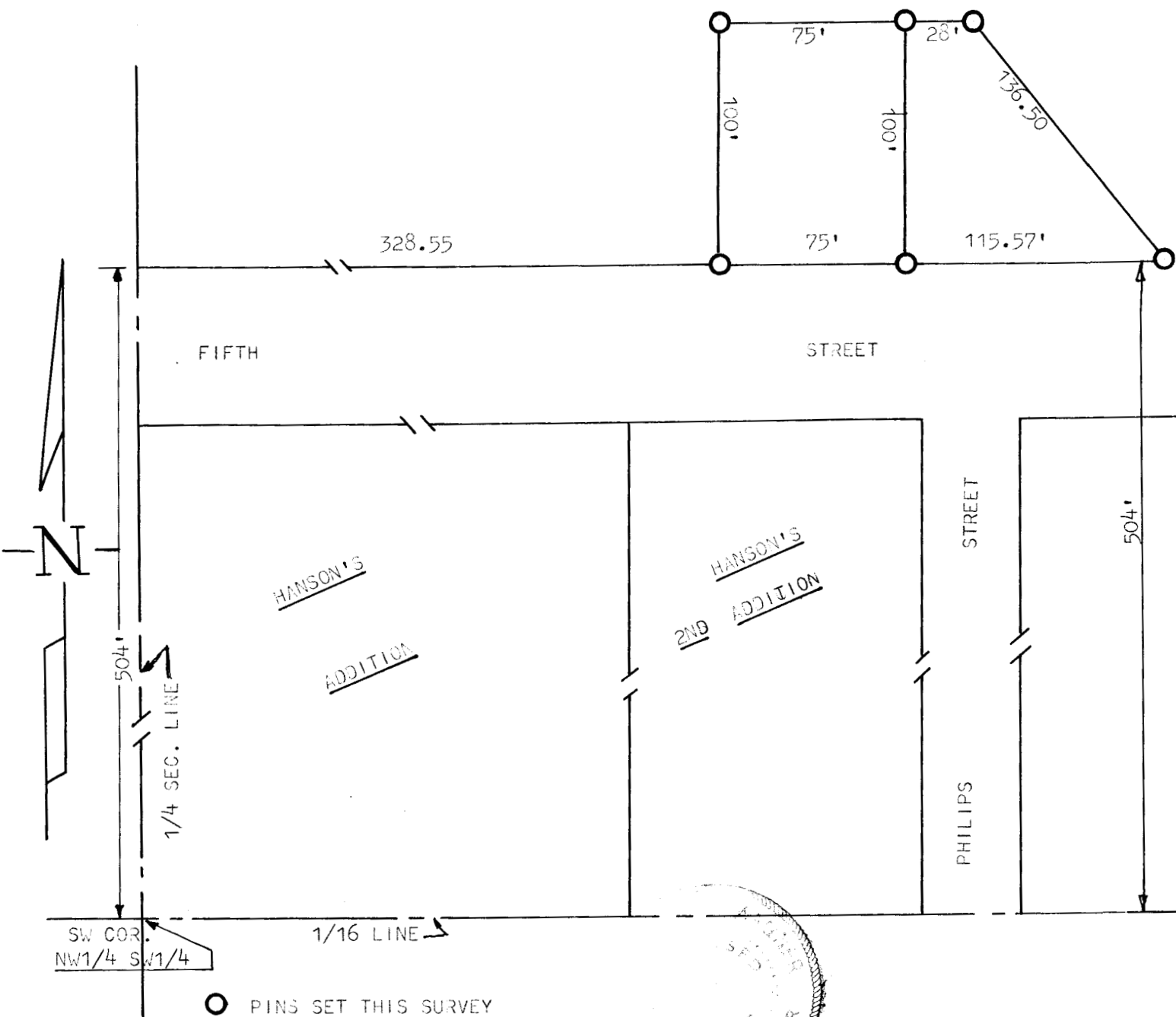


A SURVEY IN THE NW1/4 OF THE SW1/4  
SECTION 24, T17S, R 5 W



STATE OF KANSAS)  
COUNTY OF McPHERSON) SS

I, FRANCIS D. WAGNER, COUNTY ENGINEER OF McPHERSON COUNTY, KANSAS DO HEREBY CERTY THAT I DID ON THE 6TH DAY AUGUST, 1960, A SURVEY OF A TRACT OF LAND IN THE NW1/4 SW1/4 SECTION 24, T17S, R5W OF THE 6TH P.M. AND DESCRIBED AS FOLLOWS:

BEGINNING AT A POINT 504 FEET NORTH AND 328.55 FEET EAST OF THE SW CORNER OF THE NW1/4 SW1/4 SECTION 24, SAID POINT BEING ON THE NORTH LINE OF HANSON'S ADDITION; THENCE EAST ON THE NORTH LINE OF HANSON'S ADDITION AND HANSON'S 2ND ADDITION 190.57 FEET; THENCE NORTHWESTERLY 136.50 FEET MORE OR LESS TO A POINT 431.55 FEET EAST AND 604 FEET NORTH OF THE SW CORNER OF THE NW1/4 SW1/4; THENCE WEST PARRALLEL WITH NORTH LINE OF SAID ADDITIONS 103 FEET; THENCE SOUTH 100 FEET TO THE POINT OF BEGINNING. SAID TRACT CONTAINS 0.34 ACRES MORE OF LESS. AND THAT THE ACCOMPANYING PLAT IS A TRUE EXHIBIT OF SAID SURVEY.

AUGUST 6, 1960

*Francis D. Wagner*

FRANCIS D. WAGNER  
COUNTY ENGINEER  
McPHERSON COUNTY