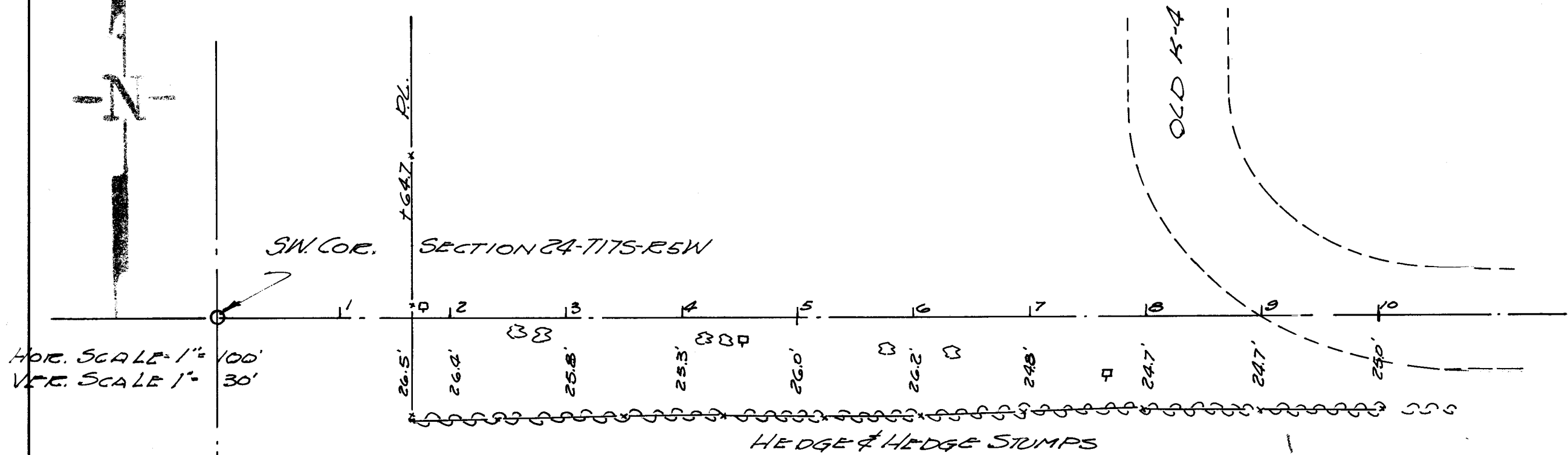


MICROFILM



State of Kansas) SS
County of McPherson)

I, Francis D. Wagner, County Engineer of McPherson County, Kansas, did cause to be done on the 27th day of June 1955 a survey to determine the south R/W line for an access road along the north side of the NW 1/4 Sec. 25-T17S-R5W and that the accompanying plat is a true exhibit of said survey.

June 27, 1955

Francis D. Wagner
County Engineer