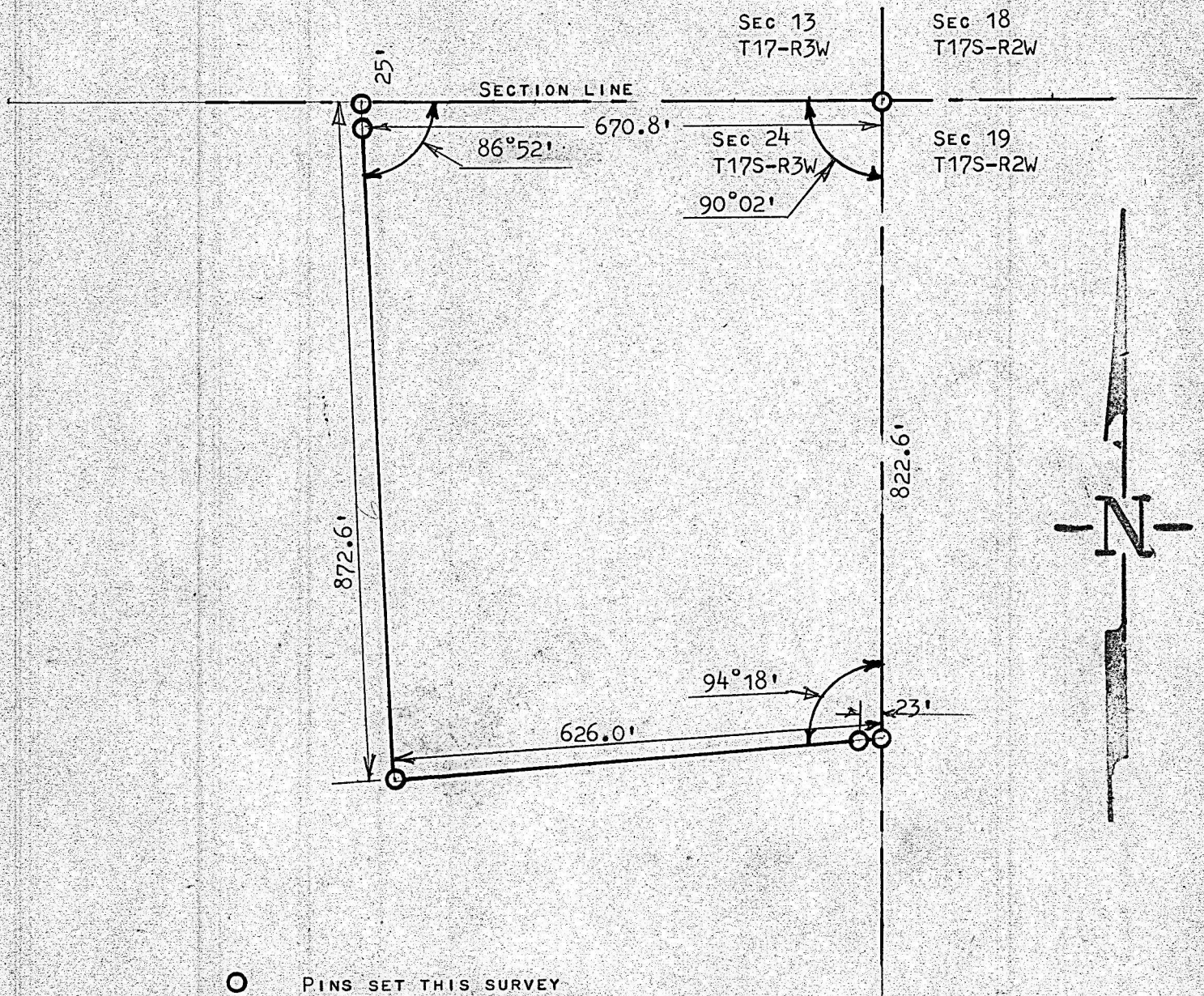


SURVEY TRACK OF LAND IN THE
NE 1/4 SECTION 24 T17S-R3W

MCPHERSON, COUNTY



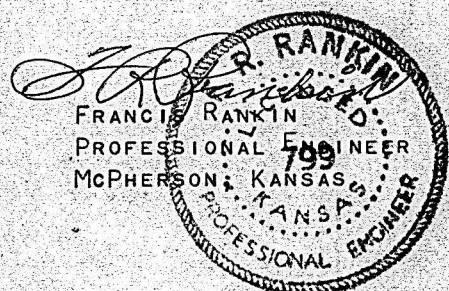
STATE OF KANSAS)
COUNTY OF MCPHERSON) SS

I, FRANCIS RANKIN, PROFESSIONAL ENGINEER OF THE STATE OF KANSAS DO HERBY CERTIFY THAT UNDER MY SUPERVISION A SURVEY WAS MADE IN THE NE 1/4 SECTION 24 T17S-R3W ON THE 6TH. P.M. AND DESCRIBED AS FOLLOWS:

BEGINNING AT THE NE. CORNER OF THE NE1/4 SECTION 24 T17S-R3W; THENCE SOUTH ON SECTION LINE 822.6 FEET; THENCE WEST AT AN INTERIOR ANGLE OF 94°18' DISTANCE OF 626.0 FEET; THENCE NORTH TO SECTION LINE 872.6 FEET TO A POINT 670.8 FEET WEST OF THE NE. CORNER NE 1/4 OF SAID SECTION 24; THENCE EAST ON SECTION LINE 670.8 FEET TO PLACE OF BEGINNING, SAID TRACT CONTAINS 12.6 ACRES MORE OR LESS, AND THAT THE ACCOMPANYING PLAT IS A TRUE EXHIBIT OF SAID SURVEY AS FAR AS IT IS KNOWN TO ME.

SURVEY CALLED FOR BY ROY L. JACOBSON

SIGNED THIS 7 DAY OF FEBRUARY, 1966



MICROFILM