

SICKMON-KLASSEN

LAND SURVEYORS

611 East 4th Ave. - P.O. Box 1691
Hutchinson, Kansas 67504-1691
Phone (316) 663-7401

W. 1/4 Cor.
Sec. 23, T.21 S., R.5 W.
Reset 1/2" I.P.

2650.75 E.D.M.

Section Line 2

S.W. Cor.

Sec. 23, T.21 S., R.5 W.

1452.99'

33' Road R/W

2656.00 P.S. & MEASURED (E.D.M.)

30.02'

1172.99'

NORTH (assumed)
OR
SOUTH

N.W. Cor.

Sec. 23, T.21 S., R.5 W.

91°50'00"

33.01'

1484.99'

33.01'

1484.99'

88°10'00"

1518.00'

30'

588'10.00" W

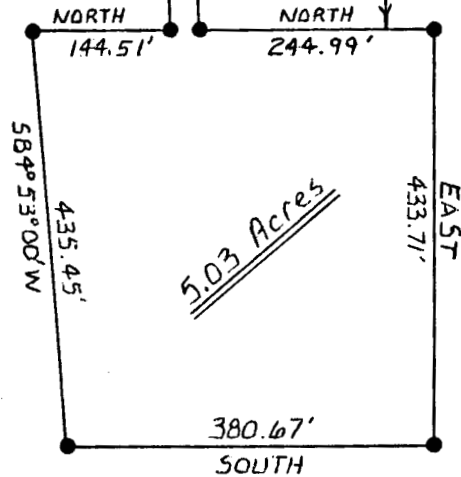
N88°10'00" E



SCALE: 1" = 200'

LEGEND

- △ - GOVERNMENT CORNER FOUND
- ▲ - GOVERNMENT CORNER RESET
- ~ - NAIL SET ON LINE
- - 5/8" x 24" IRON BAR SET
(CAPPED W/ SURVEYOR'S I.D. CAP)
- E.D.M. - ELECTRONIC DISTANCE MEASUREMENT
- P.S. - PREVIOUS SURVEY



I hereby certify that the above is a true and correct plat of a survey made of the property described herein.



Survey For: Ensz - Ediger (Eli Klassen)

Gene D. Sickmon
Registered Kansas Land Surveyor

LEGAL DESCRIPTION

A tract of land in the North Half of the Northwest Quarter (N.W. 1/4) of Section 23, Township 21 South, Range 5 West of the 6th P.M., McPherson County, Kansas; Commencing at the Northwest corner of said N.W. 1/4; thence SOUTH along the West line of said N.W. 1/4 a distance of 1,172.99 feet for a place of beginning; thence North 88 degrees 10 minutes East a distance of 1,518.00 feet to a point; thence NORTH a distance of 244.99 feet to a point; thence EAST a distance of 433.71 feet to a point; thence SOUTH a distance of 380.67 feet to a point; thence South 84 degrees 53 minutes West a distance of 435.45 feet to a point; thence NORTH a distance of 144.51 feet to a point; thence South 88 degrees 10 minutes West a distance of 1,518.00 feet to a point on the West line of said N.W. 1/4; thence NORTH along the West line of said N.W. 1/4 a distance of 30.02 feet to the place of beginning. Said tract containing 5.03 ± acres subject to any easements and/or Rights - of - Way of record.