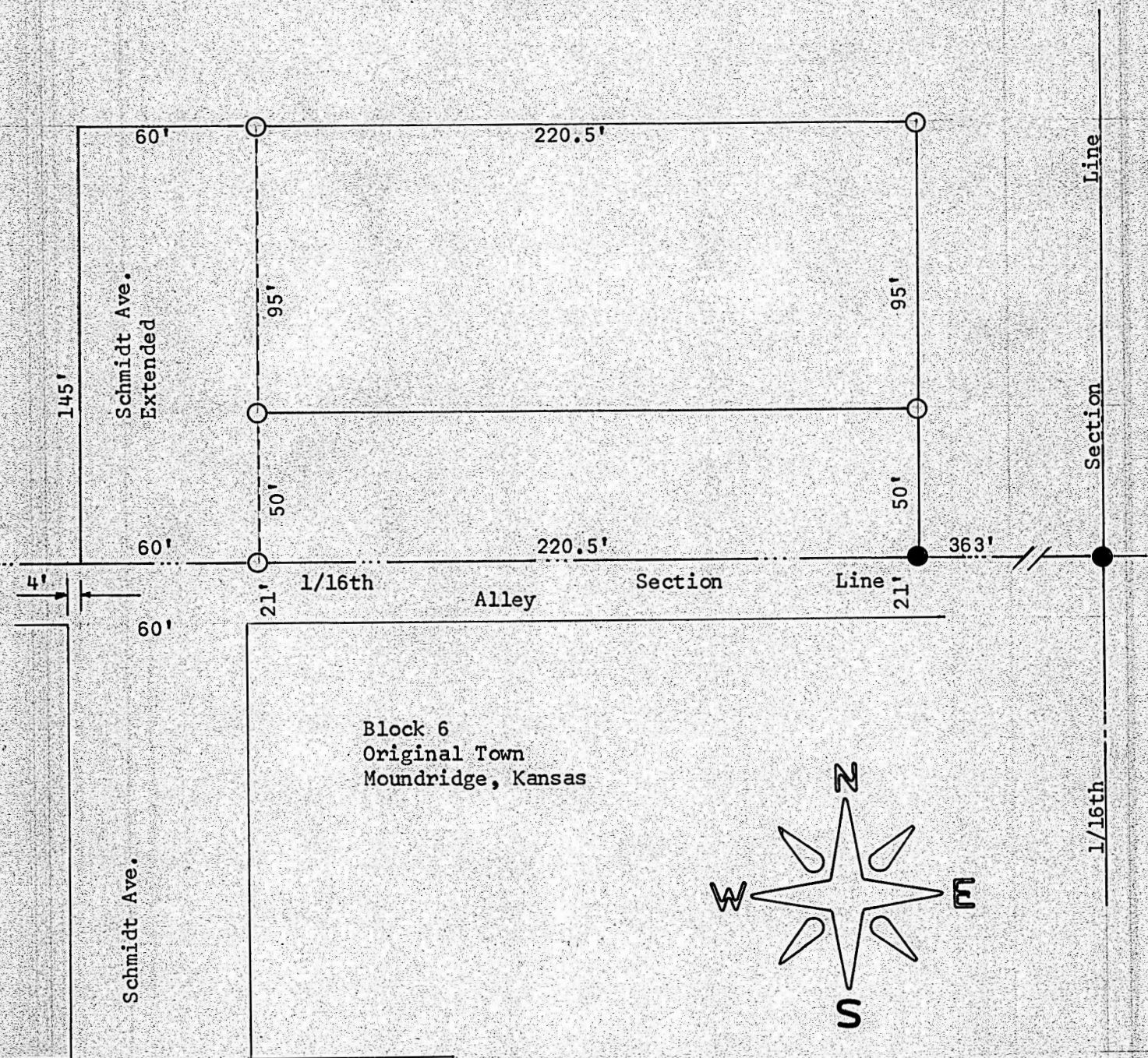


SURVEY OF A TRACT OF LAND IN THE
NW 1/4, SW 1/4 SECTION 23, T21S, R2W
MC PHERSON COUNTY, KANSAS



- Pins Set Previous Survey
- Pins Set This Survey

State of Kansas)
County of McPherson) SS

I, F. R. Rankin, County Engineer of McPherson County, do hereby certify that under my supervision a survey was made in the NW 1/4, SW 1/4 Section 23, T21S, R2W of the 6th P.M. and described as follows:

Beginning at a point beginning 363 feet West of the SE corner of the NW 1/4, SW 1/4 Section 23; thence West 280.5 feet; thence North 145 feet; thence East 280.5 feet; thence South 145 feet to the point of beginning. The land herein described contains 0.93 acres and the above plat is a true exhibit of said survey as far as it is known to me.

Survey called for by Minnie Schmidt
Signed this 10 day of October, 1969

F. R. Rankin

F. R. Rankin
County Engineer
McPherson, Kansas

