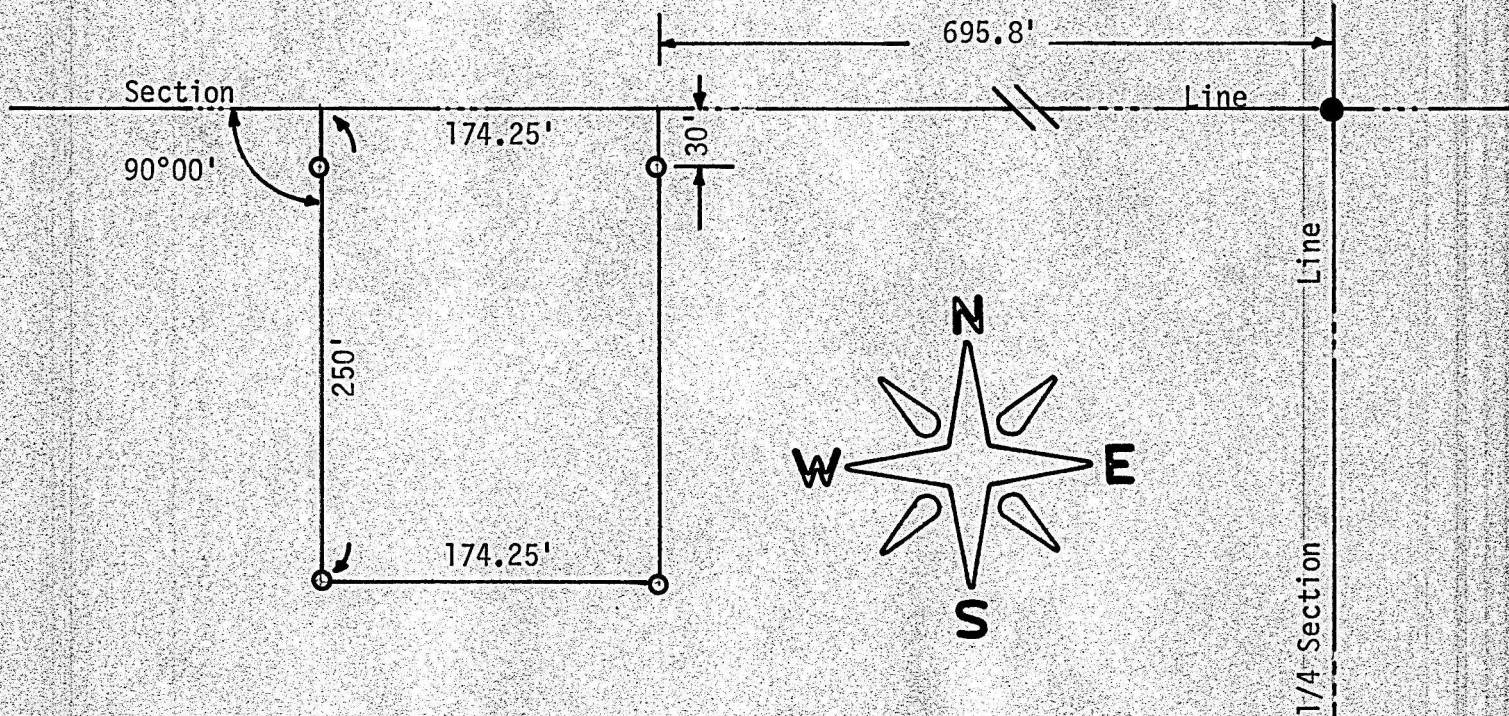


TRACT OF LAND IN THE NE 1/4, NW 1/4
SECTION 23, T21S, R2W
MC PHERSON COUNTY, KANSAS



- Pins Set Previous Survey
- Pins Set This Survey

State of Kansas)
County of McPherson) SS)

I, F. R. Rankin, County Engineer of McPherson, Kansas, do hereby certify that under my supervision a survey was made of a tract of land in the NE 1/4, NW 1/4 Section 23, T21S, R2W of the 6th P.M. and described as follows:

Commencing at the NE corner of said NE 1/4, NW 1/4; thence West on Section Line 695.8 feet to a place of beginning; thence South 90°00' a distance of 250 feet; thence West 174.25 feet; thence North 250 feet to the North Line of said NE 1/4 NW 1/4; thence East 174.25 feet to the place of beginning. The land herein described contains one acre more or less and the above plat is a true exhibit of said survey.

Survey requested by John W. Stucky

Signed this 20 day of March, 1972

F. R. Rankin

F. R. Rankin, P. E.
County Engineer
McPherson, Kansas

