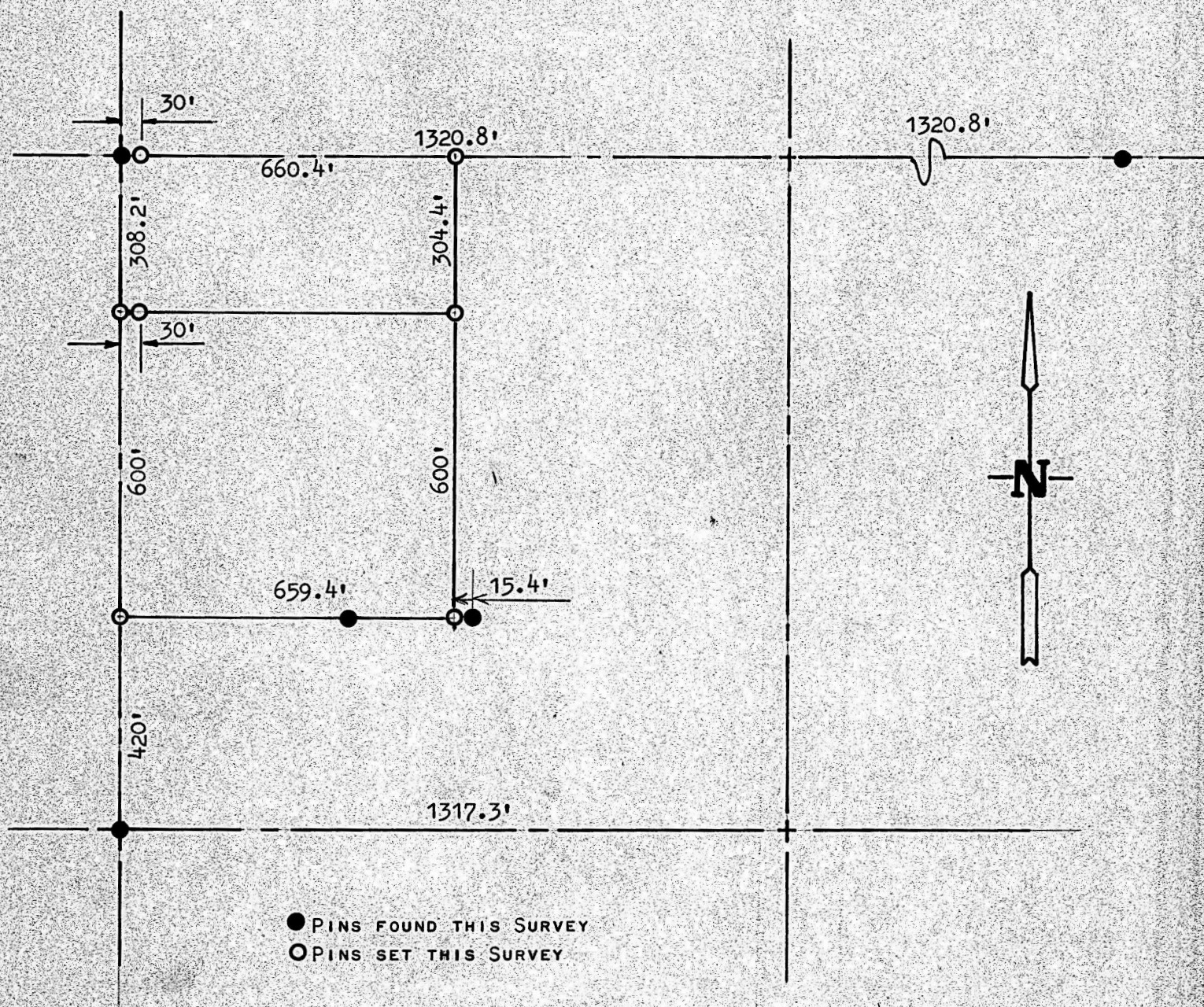


A SURVEY OF THE WEST 1/2 OF THE NW1/4
OF THE SW1/4 OF SECTION 23, T21S - R2W
EXCEPT THE SOUTH 420 FEET



STATE OF KANSAS)
COUNTY OF McPHERSON) ss

I, F. R. RANKIN, COUNTY ENGINEER OF McPHERSON COUNTY, KANSAS, DO HEREBY CERTIFY THAT UNDER MY SUPERVISION A SURVEY WAS MADE OF THE WEST 1/2 OF THE NW1/4, SW1/4 OF SECTION 23, T21S - R2W OF THE 6TH P.M., EXCEPT THE SOUTH 420 FEET, AND THE ABOVE SURVEY IS A TRUE EXHIBIT OF SAID SURVEY AS FAR AS IT IS KNOWN TO ME.

SURVEY CALLED FOR BY THE CITY OF MOUNDRIDGE, KANSAS

SIGNED ON THIS 16 DAY OF DECEMBER, 1970.

F. R. Rankin
F. R. RANKIN
COUNTY ENGINEER
McPHERSON Co., KANSAS

