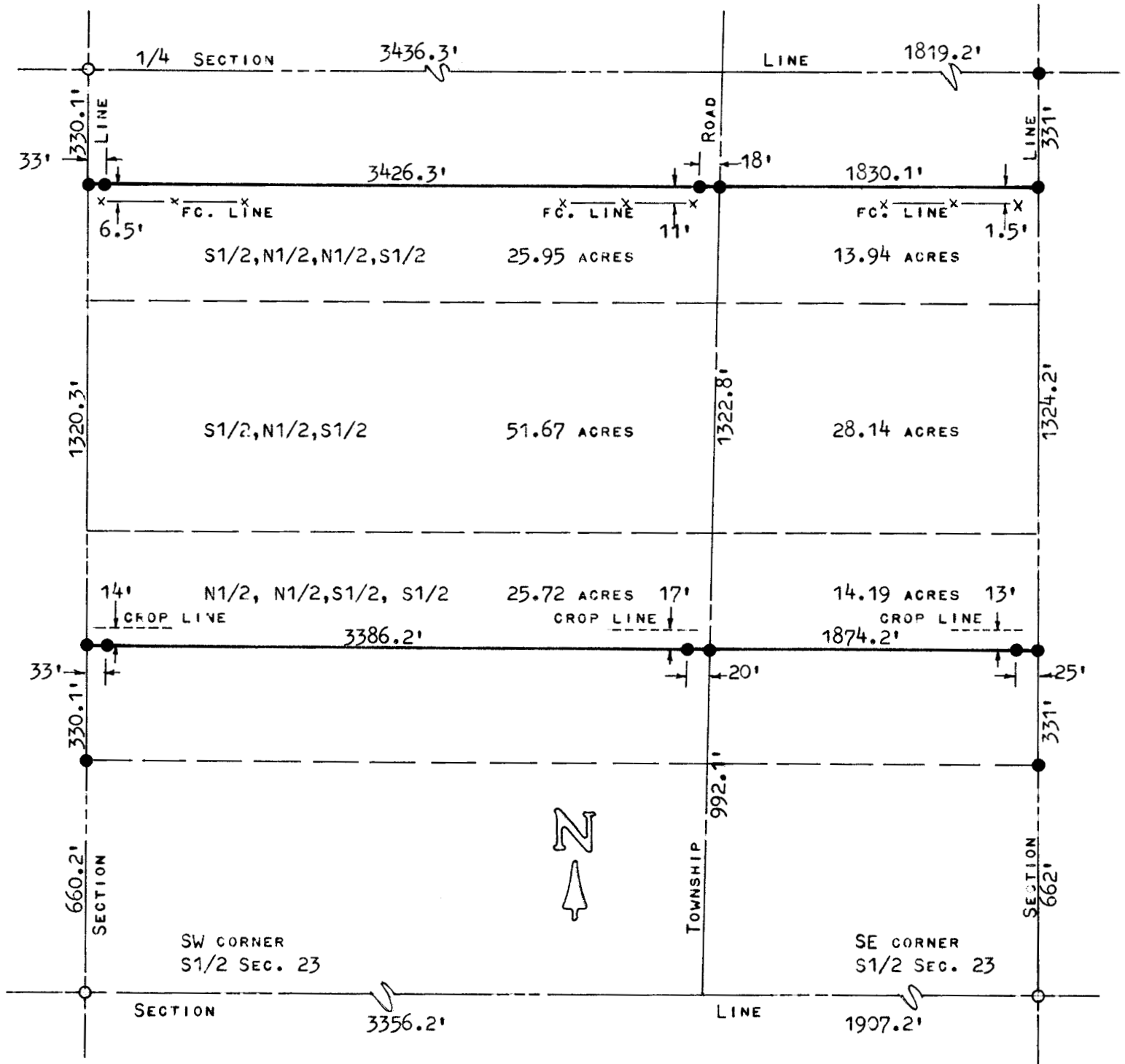


A SURVEY IN THE S1/2 OF SECTION 23,
T20S - R2W OF THE 6TH P.M.
MCIPHERSON CO., KANS.



O PINS FOUND THIS SURVEY

● PINS DET THIS SURVEY

STATE OF KANSAS)
COUNTY OF MCIPHERSON)

I, F. R. RANKIN, COUNTY ENGINEER OF MCIPHERSON CO., KANSAS, DO HEREBY CERTIFY THAT UNDER MY SUPERVISION A SURVEY WAS MADE IN THE S1/2 OF SECTION 23, T20S - R2W OF THE 6TH P.M. TO DETERMINE THE ACRES IN THE ABOVE TRACTS, AND THE ABOVE PLAT IS A TRUE EXHIBIT OF SAID SURVEY AS FAR AS IT IS KNOWN TO ME.

SURVEY CALLED FOR BY A. C. BECKER

SIGNED THIS 13 DAY OF MAY 1970.

F. R. RANKIN
COUNTY ENGINEER
MCIPHERSON CO., KANSAS



MICROFILM