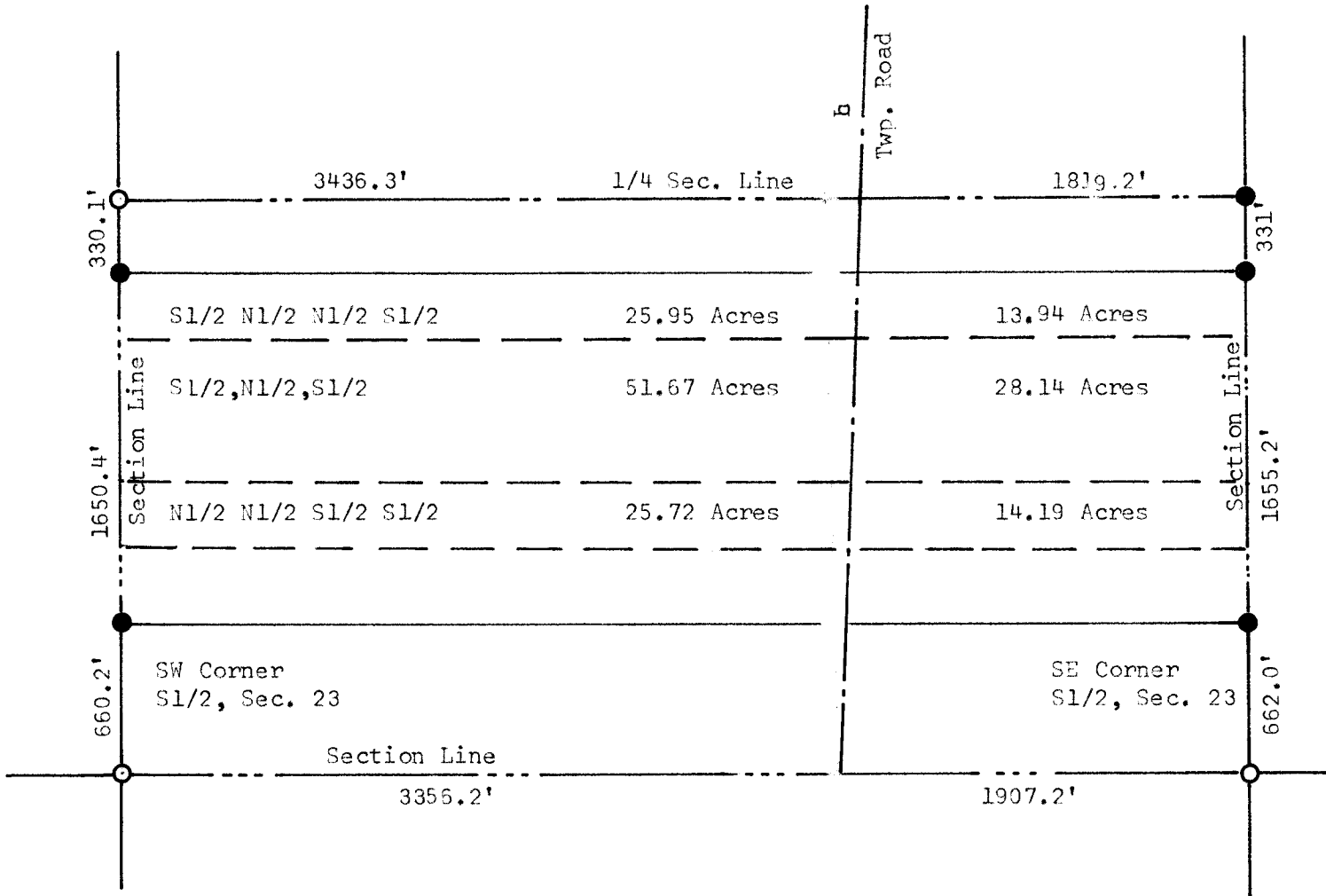
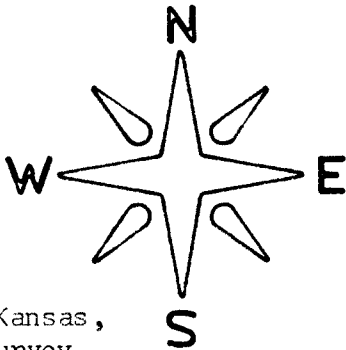


SURVEY IN THE S1/2 SECTION 23,
T20, R2W OF THE 6TH P. M.
MC PHERSON, KANSAS



- Pins Set Previous Survey
- Pins Set This Survey

State of Kansas)
County of McPherson) SS



I, F. R. Rankin, County Engineer of McPherson, Kansas,
do hereby certify that under my supervision a survey
was made in the S1/2 Section 23, T20S, R2W of the 6th P.M. to determine the
acres in the above tracts, and the above plat is a true exhibit of said sur-
vey as far as it is known to me.

Survey called for by A. C. Becker

Signed this 6 day March, 1970

F. R. Rankin
F. R. Rankin
County Engineer
McPherson, Kansas

