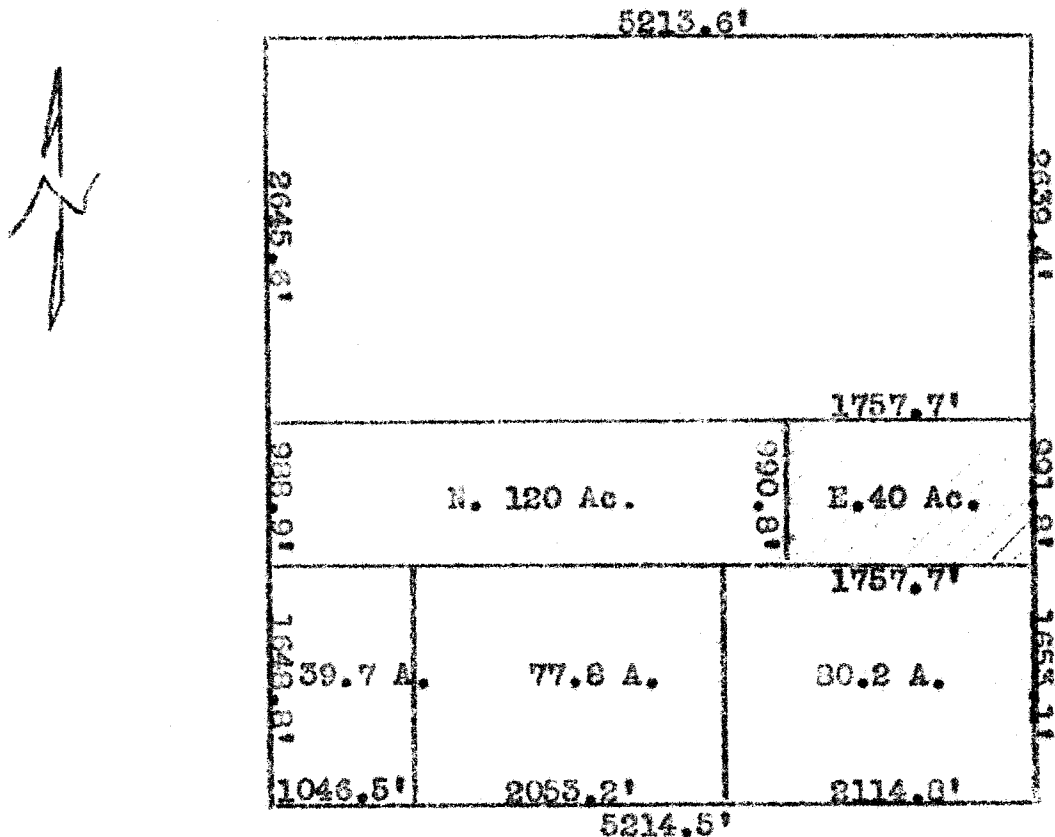


26th December, 1951

Section 23, T. 20 S., R. 1 W.



State of Kansas, County of McPherson, ss,

I, Francis D. Wagner, County Engineer of McPherson County Kansas, do hereby certify that I did cause to be done on the 26th Day of December, 1951 a survey in the S 1/2, Section 23, T-20-S, R-1-W of the Sixth Principal Meridian described as the East 40 acres of the North 120 acres of the S 1/2, Section 23, T-20-S, R-1-W and that the accompanying plat and description is a true and correct exhibit of said survey.

FRANCIS D. WAGNER  
County Engineer  
McPherson County

MICROFILM