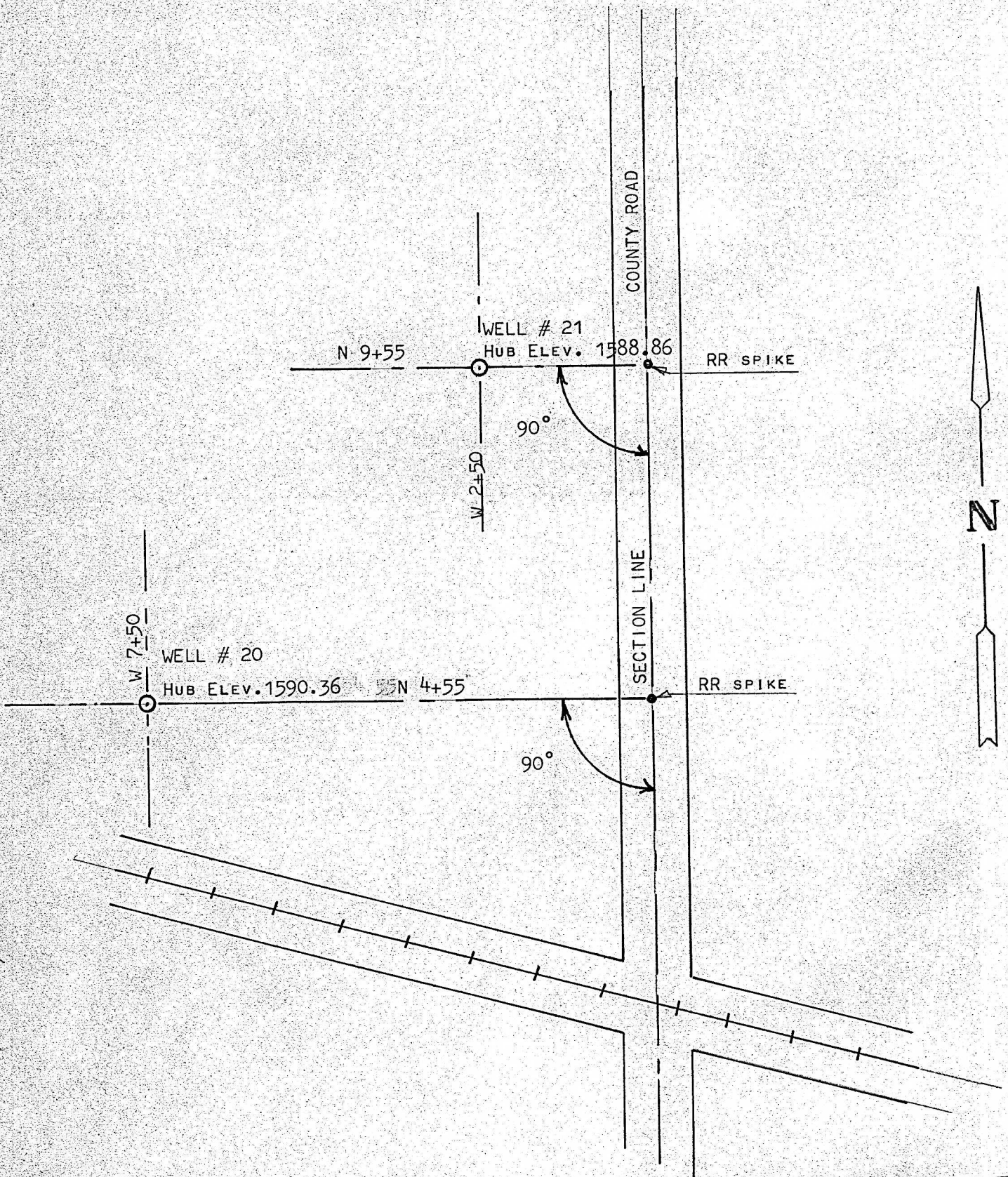


A SURVEY FOR MID AMERICA PIPE LINE
MCPHERSON COUNTY, KANSAS



MCPHERSON COUNTY, KANSAS

F. R. Rankin P.E.
FRANCIS RANKIN, PROFESSIONAL ENGINEER

SET STAKE FOR WELL # 20 & 21
SE 1/4 SECTION 23, T19S-R5W
CONWAY STATION

JUNE 24, 1969

MICROFILM

