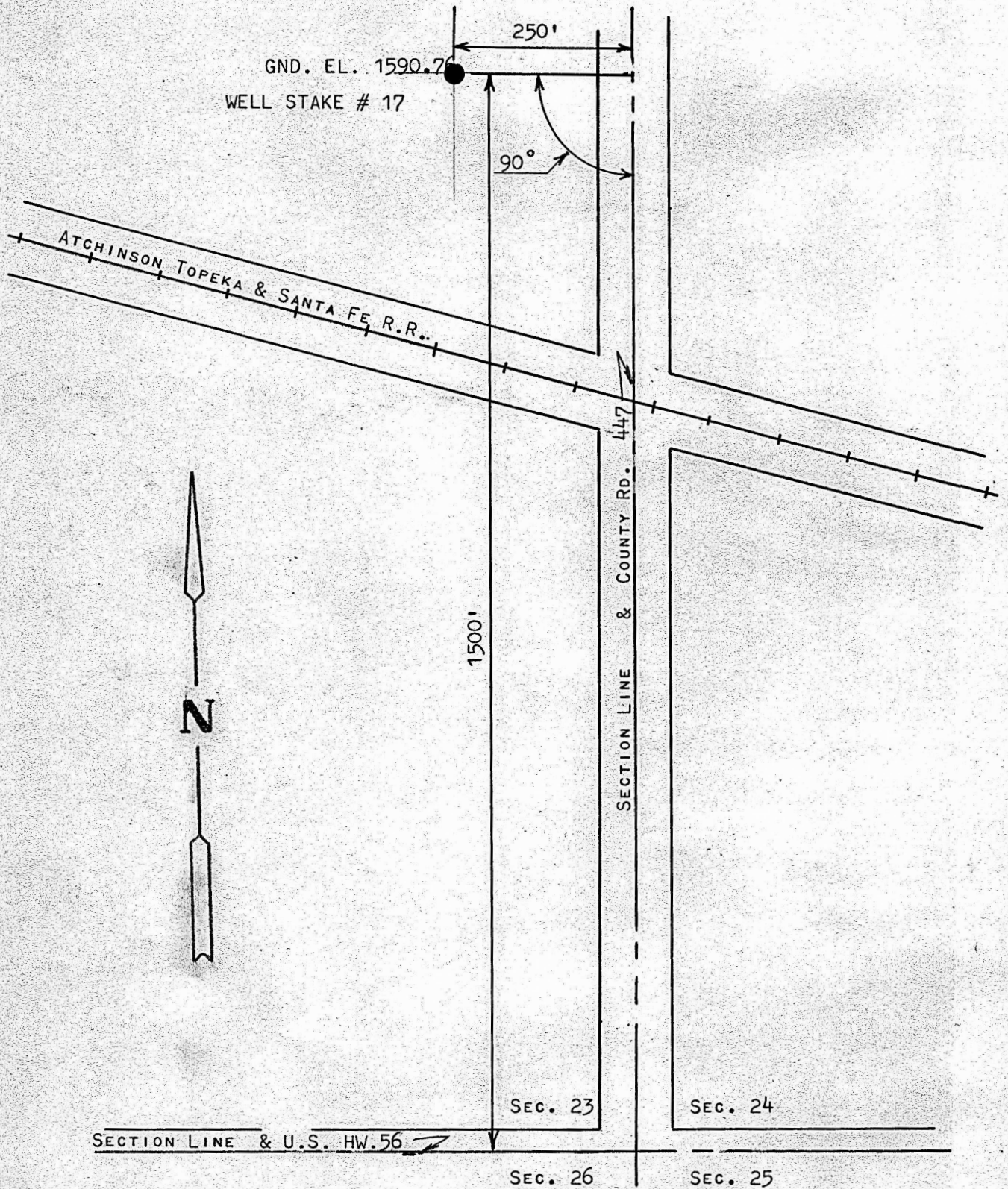


A SURVEY FOR MID AMERICA PIPE LINE  
MCPHERSON, COUNTY, KANSAS

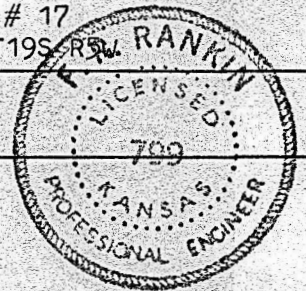


MCPHERSON, COUNTY KANSAS

*Francis Rankin*  
FRANCIS RANKIN PROFESSIONAL ENGINEER

SET STAKE FOR WELL # 17  
SE1/4 SECTION 23, T19S R9E

FEBRUARY 13, 1968



MICROFILM