

DESCRIPTION:
Lots 1 through 9 inclusive, Block 4, AND ALSO Lots 18 through 21 inclusive, Block 4, Groveland, McPherson County, Kansas.

ADDRESS:
1066 Pennsylvania Street, Groveland, Kansas 67546

GENERAL NOTES:
1) Section corner reference ties filed with the Kansas State Historical Society and the McPherson County Public Works Department as required by KSA 1987 Supp. 58-2001.
2) No titlework was provided by client for subject property. Easements and rights-of-way affecting subject property are not shown.

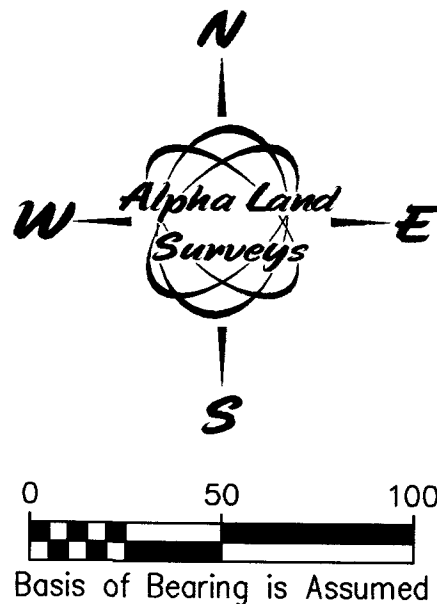
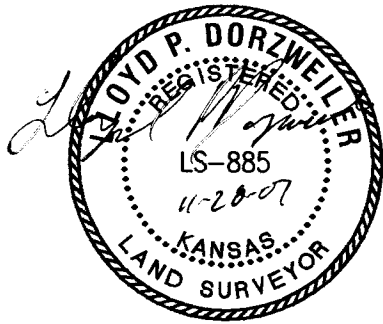
SURVEYOR'S REPORT:
A survey of properties owned by Mid-Kansas Coop Elevator situated in the Town of Groveland, McPherson County, Kansas as described hereon.
A search of public records was made at the following offices:

- McPherson County Register of Deeds: copies of deeds as described hereon and copies of street vacations.
- McPherson County Appraisal - Mapping Department: aerial photos depicting properties owned.
- McPherson County Public Works Department: copies of surveys made by F.R. Rankin dated December 1973 and Francis D. Wagoner dated December 1960.

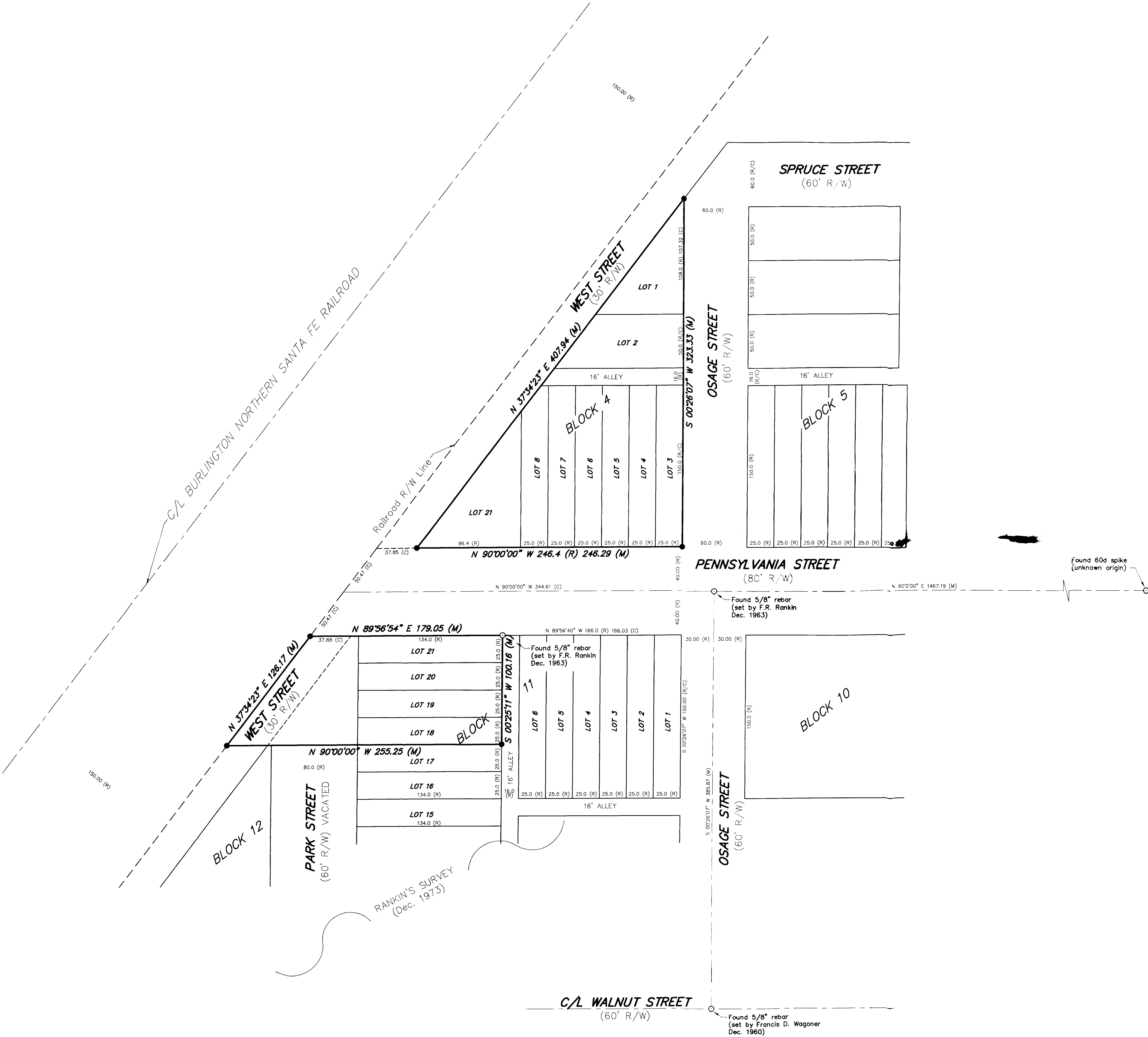
Field search of existing monuments was made and shown hereon. A search for monuments along the South line of Lot 18, Block 4 and the extension thereof as established by Rankin was made and no monuments were found. Alignment of property lines was established using centerline street monuments as shown using platted values to establish lot lines.

According to Rankin and Wagoner surveys much of the Town of Groveland was vacated by the Kansas Legislature in 1895. A portion of the Town of Groveland was re-platted in 1901 from Center Street West to the Railroad and from Walnut Street North to Spruce Street. Several streets and alleys were vacated in Groveland in 1908, but no record was found vacating West Street. Based upon Rankin's survey it appears that West Street may have never been opened in fact. Rankin's survey encompassed portions of Block 11, 12, 13, and 14 together with Park Street, West Street, and Walnut Street. Rankin's survey abutted the property owned by Mid-Kansas Coop Elevator lying South of Pennsylvania Street.

SURVEYORS CERTIFICATE:
I hereby certify that this Survey was made under my supervision on November 9, 2007.



LEGEND
○ - Found survey monument
● - Set 1/2"x24" rebar with cap stamped "ALPHA CLS-184"
M - Measured
R - Record measure
C - Calculated measure



MID-KANSAS
COOP ELEVATOR

Alpha Land Surveys, Inc.

One East Ninth Avenue
Hutchinson, Kansas 67501

Ph: (620) 728-0012 Fax: (620) 728-0413

Drawn By: LPD	Sheet 1 Of 1
Checked By: RDB	Proj. No.: 0701698