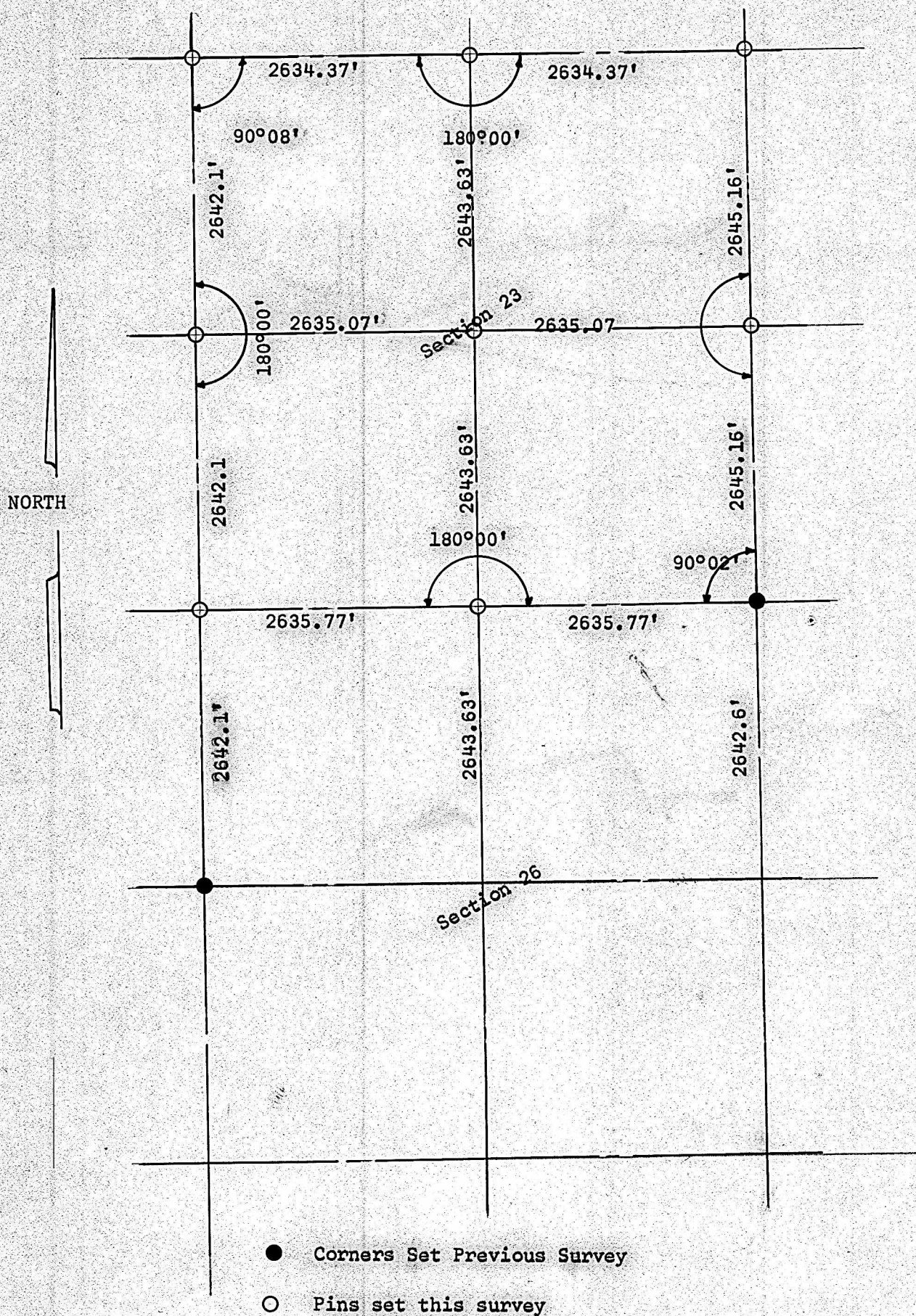


A SURVEY OF THE SOUTHEAST QUARTER
SECTION 23, T19S, R4W



State of Kansas)
County of McPherson) SS

I, Francis R. Rankin, County Engineer of McPherson County, Kansas, do hereby certify that under my supervision a survey was made of the Southeast Quarter (SE 1/4) Section 23, T19S, R4W of the 6th P.M. and that the accompanying plat is a true exhibit of said survey as far as it is know to me.

Signed this 1st of May 1968

Francis R. Rankin
Francis R. Rankin
County Engineer
McPherson, Kansas



WINDRUST