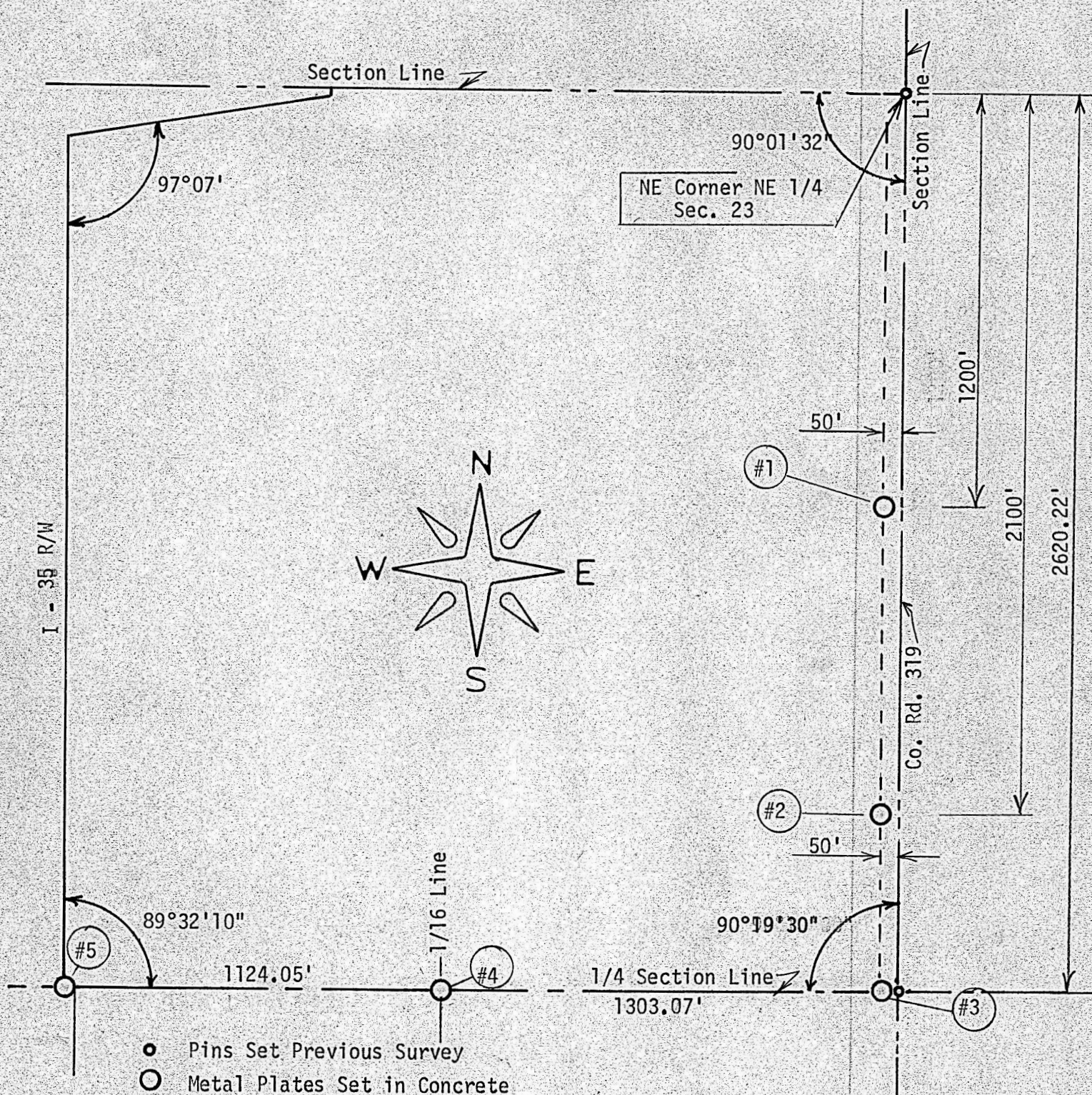


SURVEY MARKERS
NE 1/4, SECTION 23, T19S, R3W
MC PHERSON COUNTY, KANSAS



State of Kansas)
County of McPherson) SS

I, F. R. Rankin, County Engineer of McPherson County, Kansas do hereby certify that under my supervision, elevation markers and location are as follows:

1. South 1200' West 50', Elevation 1516.50
2. South 2100' West 50', Elevation 1517.25
3. South 2620.22' West 50', Elevation 1519.38
4. South 2628.18' West 1303.07'; (1/16th Section Corner) Elevation 1506.36
5. South 2635.05' West 2427.12'; (R/W on 1/4 Section Line) Elevation 1509.93

And the accompanying plat is a true exhibit of said survey as far as it is known to me.

Signed on this 16 day of February, 1973

F. R. Rankin
F. R. Rankin, P. E.
County Engineer
McPherson County, Kansas

F. R. RANKIN
LICENSED
739
KANSAS
PROFESSIONAL ENGINEER

MICROFILM