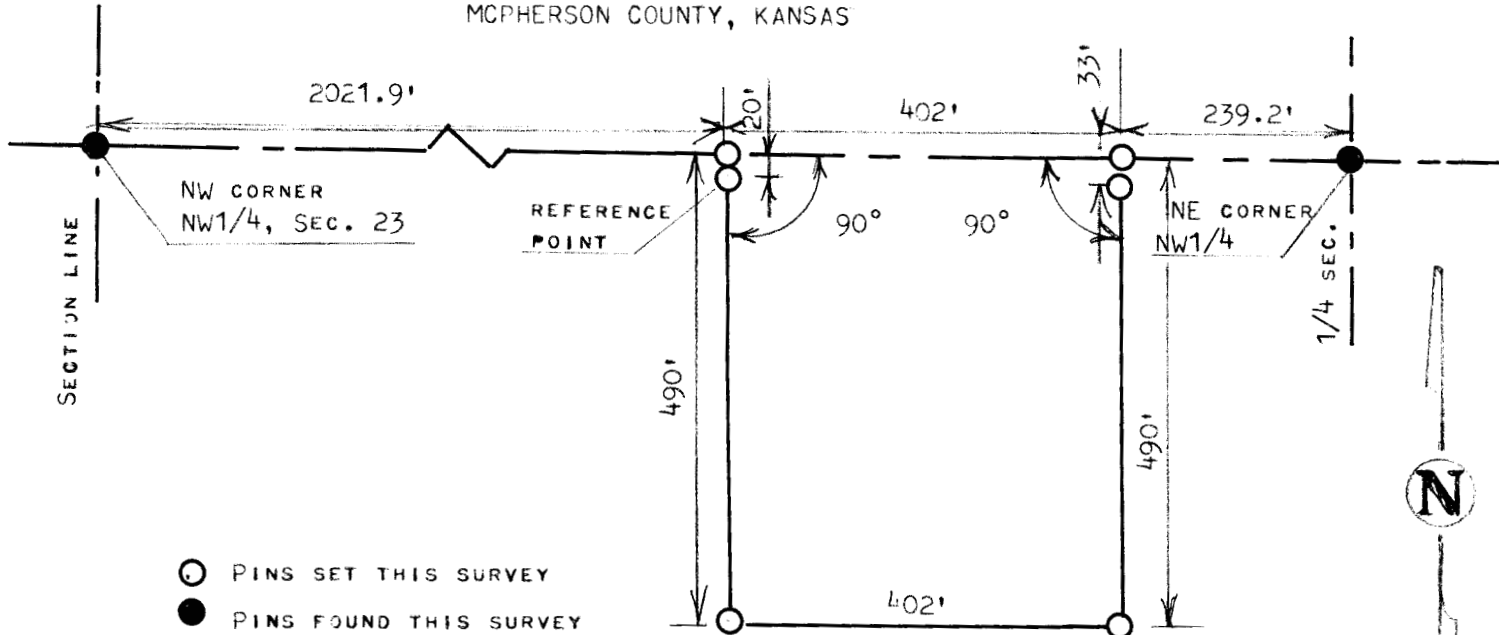


A SURVEY OF A TRACT OF LAND IN THE
NW 1/4, SECTION 23, T19S, R2W
MCIPHERSON COUNTY, KANSAS



STATE OF KANSAS)
COUNTY OF MCIPHERSON) SS

I, MELVIN FERGUSON, PROFESSIONAL ENGINEER OF THE STATE OF KANSAS DO HEREBY CERTIFY THAT UNDER MY SUPERVISION A SURVEY WAS MADE OF A TRACT OF LAND IN THE NW1/4, SECTION 23, T19S, R2W OF THE 6TH P.M. AND DESCRIBED AS FOLLOWS;
COMMENCING AT THE NW CORNER OF THE NW1/4, SECTION 23, T19S, R2W; THENCE EAST ON SECTION LINE 2021.9 FEET FOR PLACE OF BEGINNING; THENCE CONTINUING EAST ON SECTION LINE 402.0 FEET; THENCE RIGHT ANGLE SOUTH 490 FEET; THENCE WEST PARALLEL WITH SECTION LINE 402.0 FEET; THENCE NORTH TO SECTION LINE 490.0 FEET AND TO PLACE OF BEGINNING, SAID TRACT OF LAND CONTAINS 4.52 ACRES MORE OR LESS, AND THAT THE ACCOMPANYING PLAT IS A TRUE EXHIBIT OF SAID SURVEY AS FAR AS IT IS KNOWN TO ME.
SURVEY CALLED FOR BY AARON KOEHN

SIGNED THIS _____ DAY OF SEPTEMBER, 1983

MELVIN FERGUSON
PROFESSIONAL ENGINEER
MCIPHERSON, KANSAS

