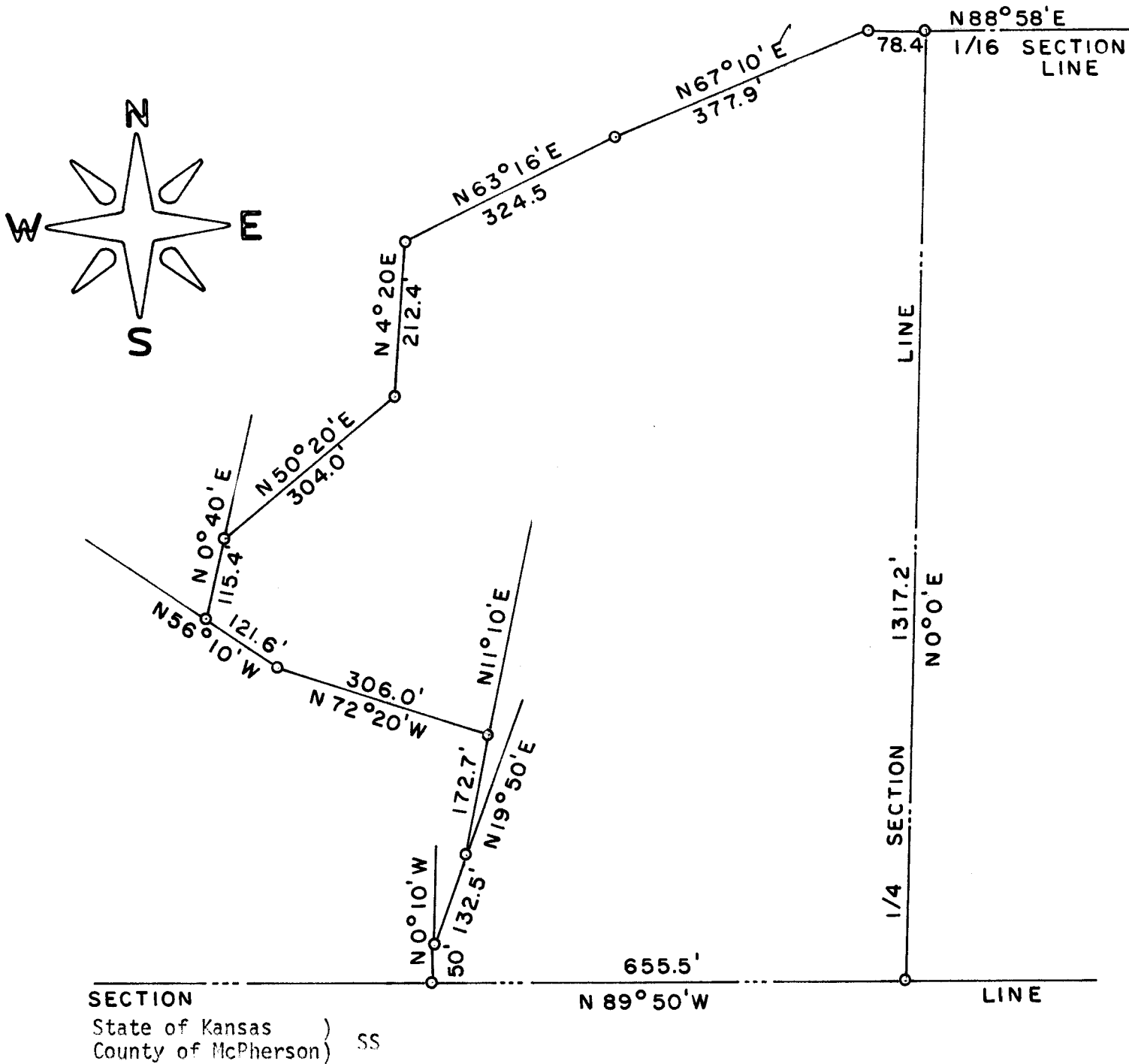


SURVEY OF A TRACT OF LAND IN THE
SE1/4, SW1/4, SECTION 22, T21S, R3W
MC PHERSON, KANSAS



I, F.R. Rankin, Co. Engineer of McPherson County, Kansas do hereby certify that under my supervision a survey was made in the SE1/4, SW1/4 of Section 22, T21S, R3W of the 6th P.M. and described as follows: Beginning at the SE corner of said SW1/4; thence West on Section Line with a bearing of S89°50'W, a distance of 655.5 feet; thence N0°10'W, a distance of 50.0 feet; thence N19°50'E, a distance of 132.5 feet and being the fence line along the West side of Turkey Creek as described on original deed; thence N11°10'E, a distance of 172.7 feet; thence N72°20'W a distance of 306.0 feet; thence N56°10'W, a distance of 121.6 feet; thence N0°40'E, a distance of 115.4 feet; thence N50°20'E, a distance of 304.0 feet; thence N4°20'E, a distance of 212.4 feet; thence N63°16'E, a distance of 324.5 feet; thence N67°10'E, a distance of 377.9 feet to the North line of said SE1/4, SW1/4; thence N88°58'E, a distance of 78.4 feet on said 1/16th Section Line to the NE corner of said SE1/4, SW1/4; thence S0°0'E, a distance of 1317.2 feet to the place of beginning. The land herein described contains 20.5 acres more or less and the above plat is a true exhibit of said survey as far as it is known to me.

Note: Not plotted or drawn to scale.
Survey called for by Vonts Est.

Signed this 7 day of June 1972

F. R. Rankin
F. R. Rankin, P. E.
County Engineer
McPherson, Kansas



MICROFILM