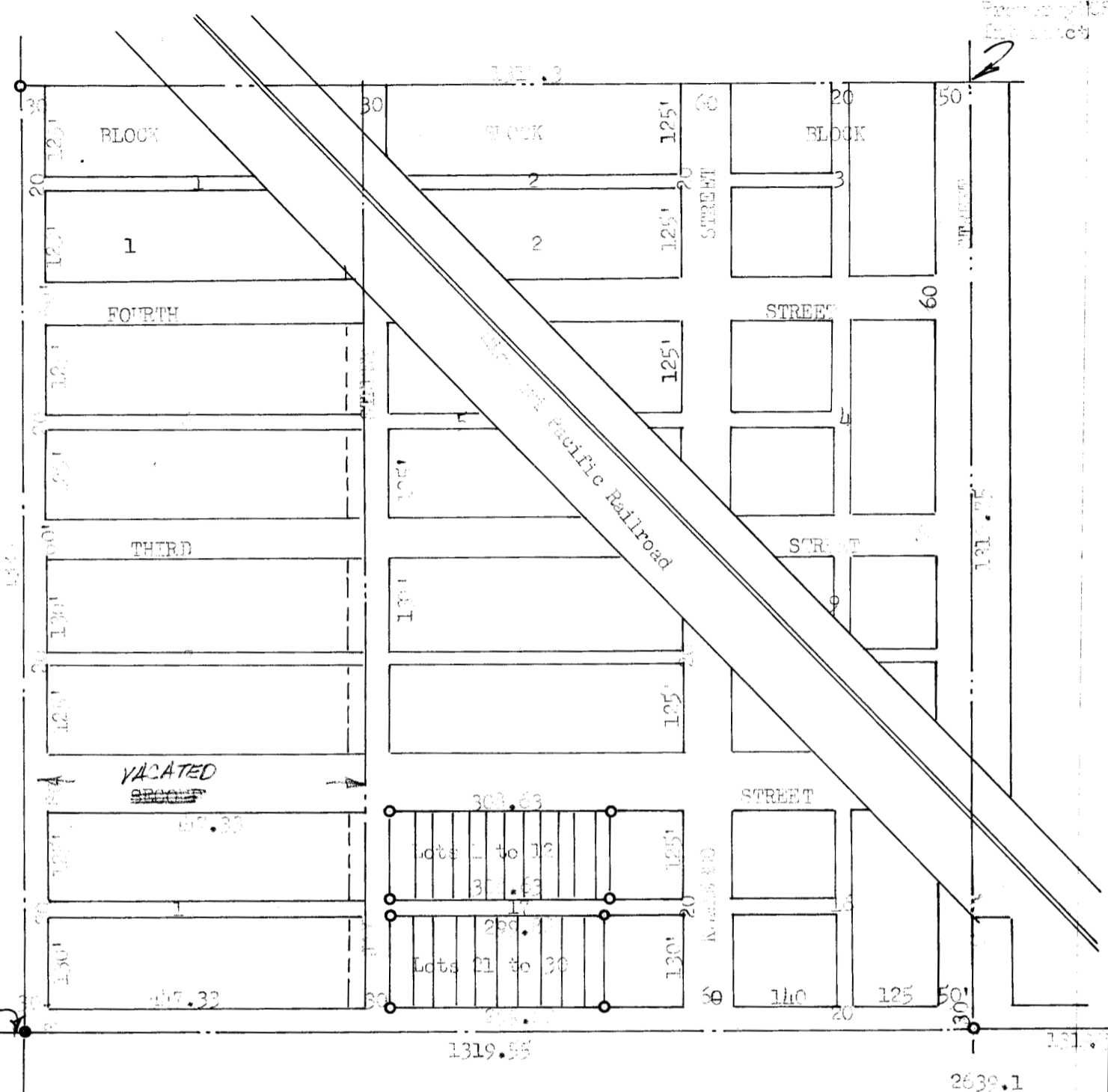


SURVEY OF LOTS 1 TO 12
LOTS 21 TO 30 BLOCK 17 ELYRIA, KANSAS
JUNE 26, 1954



23-T205-R3

lines from previous survey

lines set on this survey

State of Kansas)
McPherson County, Kansas) SS

I, Francis D. Wagner County Engineer of McPherson County Kansas, do hereby certify that I did cause to be done on the 26th day of June 1954 a survey to determine the corners of Lots 1 to 12 & Lots 21 to 30, Block 17, Elyria, Kansas, and that the accompanying plat is a true exhibit of said survey.

Francis D. Wagner

FRANCIS D. WAGNER
County Engineer
McPherson County

MICROFILM