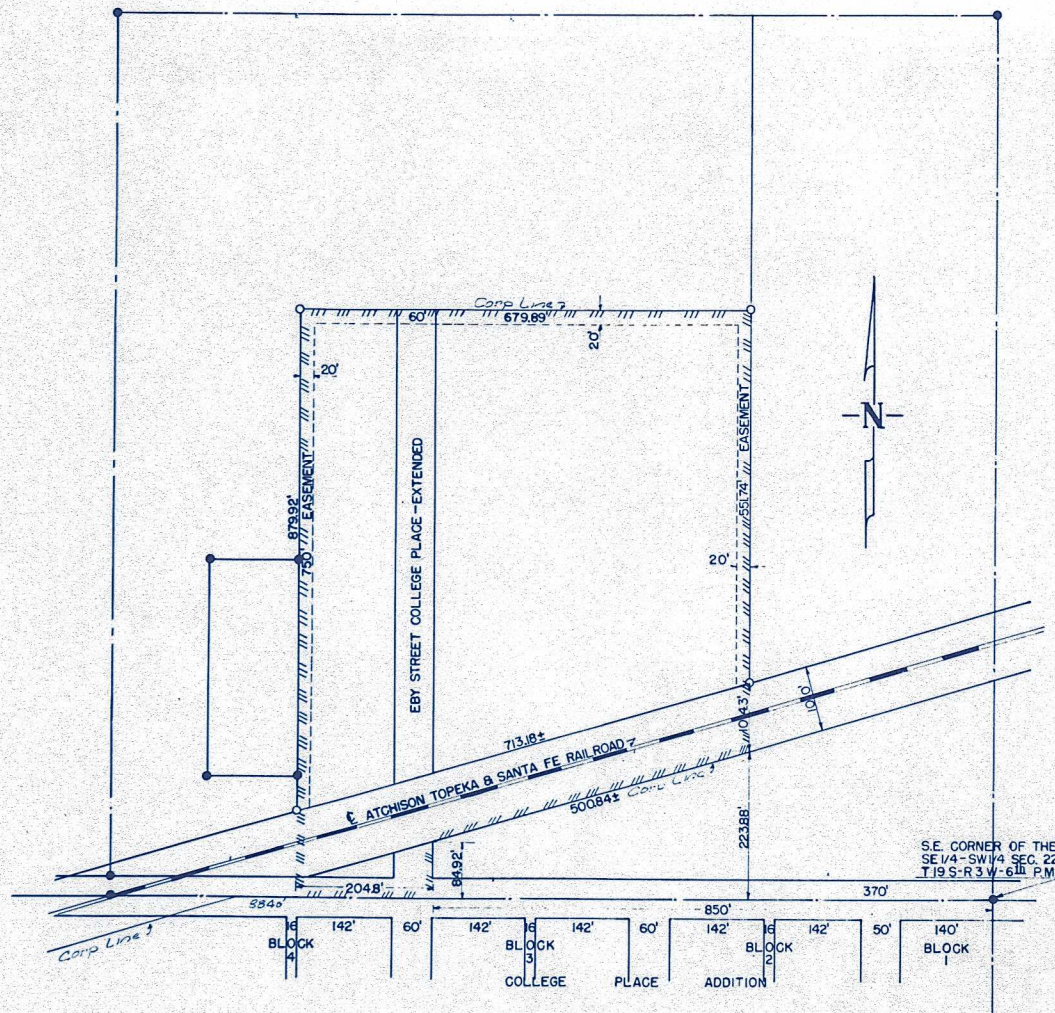


# INDUSTRIAL 1<sup>ST</sup> ADDITION CITY OF McPHERSON KANSAS



## DEDICATION:

KNOW ALL MEN BY THESE PRESENTS, THAT THE MCPHERSON INDUSTRIAL DEVELOPMENT CO. INC., OWNERS AND PROPRIETORS OF THE LANDS HEREINAFTER DESCRIBED HAS CAUSED SAID LANDS TO BE SURVEYED AND PLATTED UNDER THE NAME OF INDUSTRIAL 1<sup>ST</sup> ADDITION TO THE CITY OF MCPHERSON, KANSAS, AND HAS CAUSED THE SAME TO BE SUBDIVIDED INTO BLOCKS, LOTS, STREETS, AVENUES, DRIVES AND PUBLIC WAYS AS SHOWN ON THE ACCOMPANYING PLAT AND SUCH STREETS, AVENUES, DRIVES AND PUBLIC WAYS ARE DEDICATED TO THE PUBLIC USE.

## DESCRIPTION:

A TRACT OF LAND LYING IN THE SE 1/4 SW 1/4 SECTION 22, T19 S, R3 W, OF THE 6TH PRINCIPAL MERIDIAN AND DESCRIBED AS FOLLOWS:

BEGINNING AT A POINT 850' FEET WEST OF THE SE CORNER OF THE SE 1/4 SW 1/4 SECTION 22-T19S-R3W OF THE 6TH PRINCIPAL MERIDIAN AND 30' FEET NORTH OF THE NW CORNER LOT 52 BLOCK 3, COLLEGE PLACE ADDITION TO THE CITY OF MCPHERSON; THENCE NORTH 84.92' FEET MORE OR LESS TO THE SOUTH RIGHT-OF-WAY LINE OF THE ATCHISON TOPEKA & SANTA FE RAILROAD; THENCE IN AN EAST-NORTHEASTERLY DIRECTION ALONG THE SOUTH RIGHT-OF-WAY LINE 500.84' FEET MORE OR LESS TO A POINT 370' FEET WEST AND 223.88' FEET NORTH OF THE SE CORNER OF THE SE 1/4 SW 1/4 SECTION 22-T19 S-R3 W; THENCE NORTH PARALLEL TO THE EAST LINE OF SAID SE 1/4 SW 1/4 656.04' FEET; THENCE WEST 679.89' FEET; THENCE SOUTH 879.92' FEET TO THE SOUTH LINE OF THE SE 1/4 SW 1/4 SECTION 22-T19 S-R3 W; THENCE EAST 204.8' FEET TO THE PLACE OF BEGINNING.

DATED AT MCPHERSON, KANSAS 1959

ATTEST: MCPHERSON INDUSTRIAL DEVELOPMENT CO. INC.

STATE OF KANSAS, COUNTY OF MCPHERSON: SS  
I FRANCIS D. WAGNER, COUNTY ENGINEER OF MCPHERSON COUNTY, KANSAS, DO HEREBY CERTIFY THAT I DID ON THE 1<sup>ST</sup> DAY OF OCTOBER, 1959, MAKE A SURVEY OF THE ABOVE DESCRIBED PREMISES, AND THAT THE ACCOMPANYING PLAT IS A TRUE EXHIBIT OF SAID SURVEY.

COUNTY ENGINEER

STATE OF KANSAS } SS  
COUNTY OF MCPHERSON

ON THIS 2<sup>ND</sup> DAY OF 1959, BEFORE ME, THE UNDERSIGNED, A NOTARY PUBLIC IN AND FOR THE COUNTY AND STATE AFORESAID, PERSONALLY APPEARED \_\_\_\_\_ PRESIDENT OF THE MCPHERSON INDUSTRIAL DEVELOPMENT CO., INC., TO ME KNOWN TO BE THE IDENTICAL PERSON WHO SUBSCRIBED THE NAME OF THE MAKER THEREOF TO THE FOREGOING INSTRUMENT AS ITS PRESIDENT AND ACKNOWLEDGED TO ME THAT HE EXECUTED THE SAME AS HIS FREE AND VOLUNTARY ACT AND DEED, AND AS THE FREE AND VOLUNTARY ACT AND DEED OF SUCH CORPORATION, FOR THE USES AND PURPOSES THEREIN SET FORTH.

GIVEN UNDER MY HAND AND SEAL OF OFFICE THE DAY AND YEAR LAST ABOVE WRITTEN.

NOTARY PUBLIC

MY COMMISSION EXPIRES:

STATE OF KANSAS } SS  
COUNTY OF MCPHERSON

BE IT KNOWN, THAT THE ATTACHED PLAT HAS BEEN SUBMITTED TO ME, AND THAT THE SAME IS HEREBY APPROVED THIS 2<sup>ND</sup> DAY OF OCTOBER, 1959.

CITY ATTORNEY

STATE OF KANSAS } SS  
COUNTY OF MCPHERSON

BE IT KNOWN, THAT THE ACCOMPANYING PLAT HAS BEEN SUBMITTED TO AND APPROVED BY THE PLANNING COMMISSION OF THE CITY OF MCPHERSON, KANSAS, ON THIS THE 2<sup>ND</sup> DAY OF 1959.

CHAIRMAN OF PLANNING COMMISSION  
CITY OF MCPHERSON

STATE OF KANSAS } SS  
COUNTY OF MCPHERSON

BE IT KNOWN, THAT THE ACCOMPANYING PLAT OF THE MCPHERSON INDUSTRIAL DEVELOPMENT CO., INC., OF INDUSTRIAL 1<sup>ST</sup> ADDITION TO THE CITY OF MCPHERSON, KANSAS, WAS SUBMITTED TO THE GOVERNING BODY OF MCPHERSON, KANSAS, AND APPROVED ON THE 2<sup>ND</sup> DAY OF 1959.

MAYOR

ATTEST: CITY CLERK

STATE OF KANSAS } SS  
COUNTY OF MCPHERSON

BE IT KNOWN, THAT THE ACCOMPANYING PLAT BY THE MCPHERSON INDUSTRIAL DEVELOPMENT CO., INC., OF INDUSTRIAL 1<sup>ST</sup> ADDITION TO THE CITY OF MCPHERSON, KANSAS, WAS SUBMITTED TO THE BOARD OF COUNTY ZONING BOARD AND APPROVED ON THE 2<sup>ND</sup> DAY OF OCTOBER 1959.

CHAIRMAN OF COUNTY ZONING BOARD

STATE OF KANSAS } SS  
COUNTY OF MCPHERSON

BE IT KNOWN, THAT THE ACCOMPANYING PLAT BY THE MCPHERSON INDUSTRIAL DEVELOPMENT CO., INC., OF INDUSTRIAL 1<sup>ST</sup> ADDITION TO THE CITY OF MCPHERSON, KANSAS, WAS SUBMITTED TO THE BOARD OF COUNTY COMMISSIONERS OF MCPHERSON COUNTY AND APPROVED ON THE 2<sup>ND</sup> DAY OF OCTOBER 1959.

CHAIRMAN OF BOARD  
COUNTY COMMISSIONERS

ATTEST: COUNTY CLERK

MCPHERSON COUNTY HIGHWAY DEPARTMENT  
FRANCIS D. WAGNER ENGINEER  
A SURVEY OF A TRACT  
OF LAND IN THE SE 1/4 SW 1/4  
SECTION 22-T19 S-R 3 W  
OCTOBER 2, 1959 SCALE 1"=100'