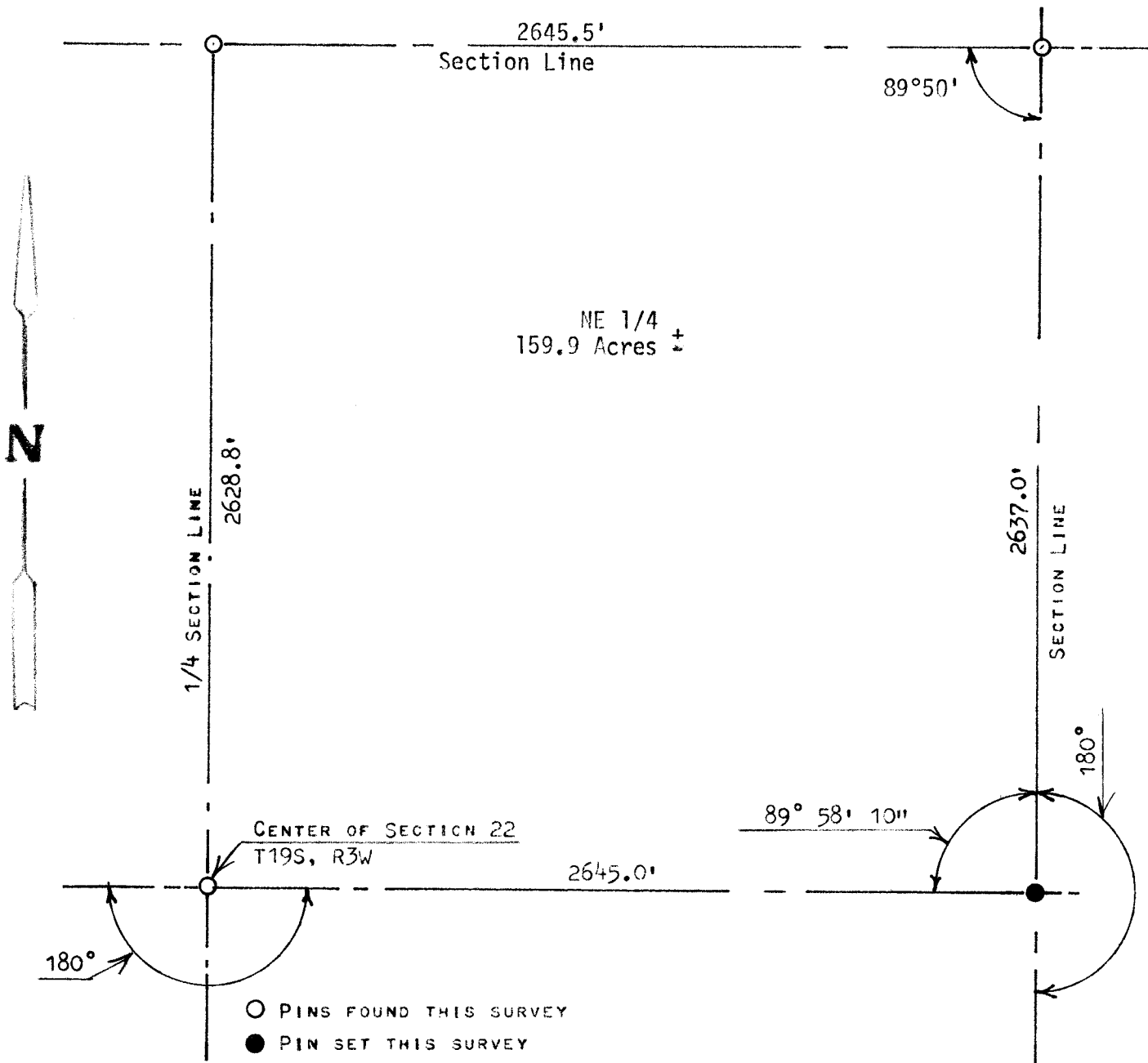


A SURVEY OF THE NE 1/4, SECTION 22,  
TOWNSHIP 19S, RANGE 3W  
MC PHERSON COUNTY, KANSAS



STATE OF KANSAS )  
COUNTY OF MCPHERSON ) SS

I, FRANCIS RANKIN, COUNTY ENGINEER OF MCPHERSON COUNTY, KANSAS  
DO HEREBY CERTIFY THAT UNDER MY SUPERVISION A SURVEY WAS MADE  
OF THE NE1/4, SECTION 22, T19S, R3W OF THE 6TH P.M. AND THE  
ABOVE PLAT IS A TRUE EXHIBIT OF SAID SURVEY AS FAR AS IT IS  
KNOWN TO ME.

SURVEY REQUESTED BY JOHN BREMYER ( ATTY )

SIGNED THIS 4 DAY OF OCTOBER, 1972

*Francis Rankin*  
FRANCIS RANKIN  
COUNTY ENGINEER  
MCPHERSON COUNTY, KANSAS

