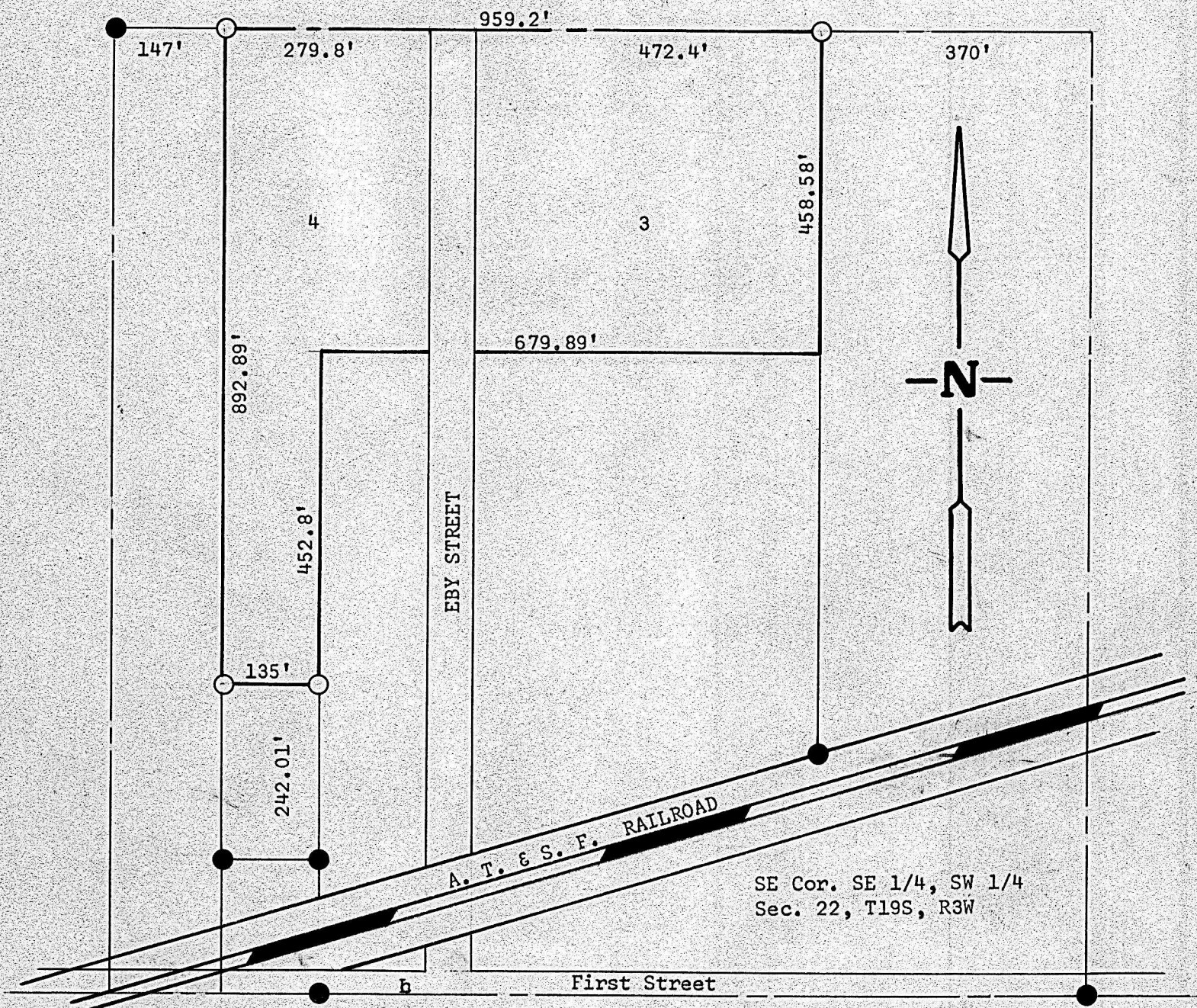


A SURVEY OF LOTS 3 & 4  
INDUSTRIAL 1ST. ADDITION SUPPLEMENT 1  
CITY OF MC PHERSON, KANSAS

Sec. 22 19-3



- Pins Found This Survey
- Pins Set This Survey

State of Kansas )  
County of McPherson) SS

I, Francis Rankin, County Engineer of McPherson County, Kansas, do hereby certify that under my supervision a survey was made of Lots 3 & 4, Industrial 1st Addition Supplement 1 to the City of McPherson, Kansas, and that the accompanying plat is a true exhibit of said survey as far as it is known to me.

Survey called for by Kit Manufacturing

Signed this 3/4 day of March, 1969

*F. R. Rankin*  
F. R. Rankin  
County Engineer  
McPherson, Kansas



41950583