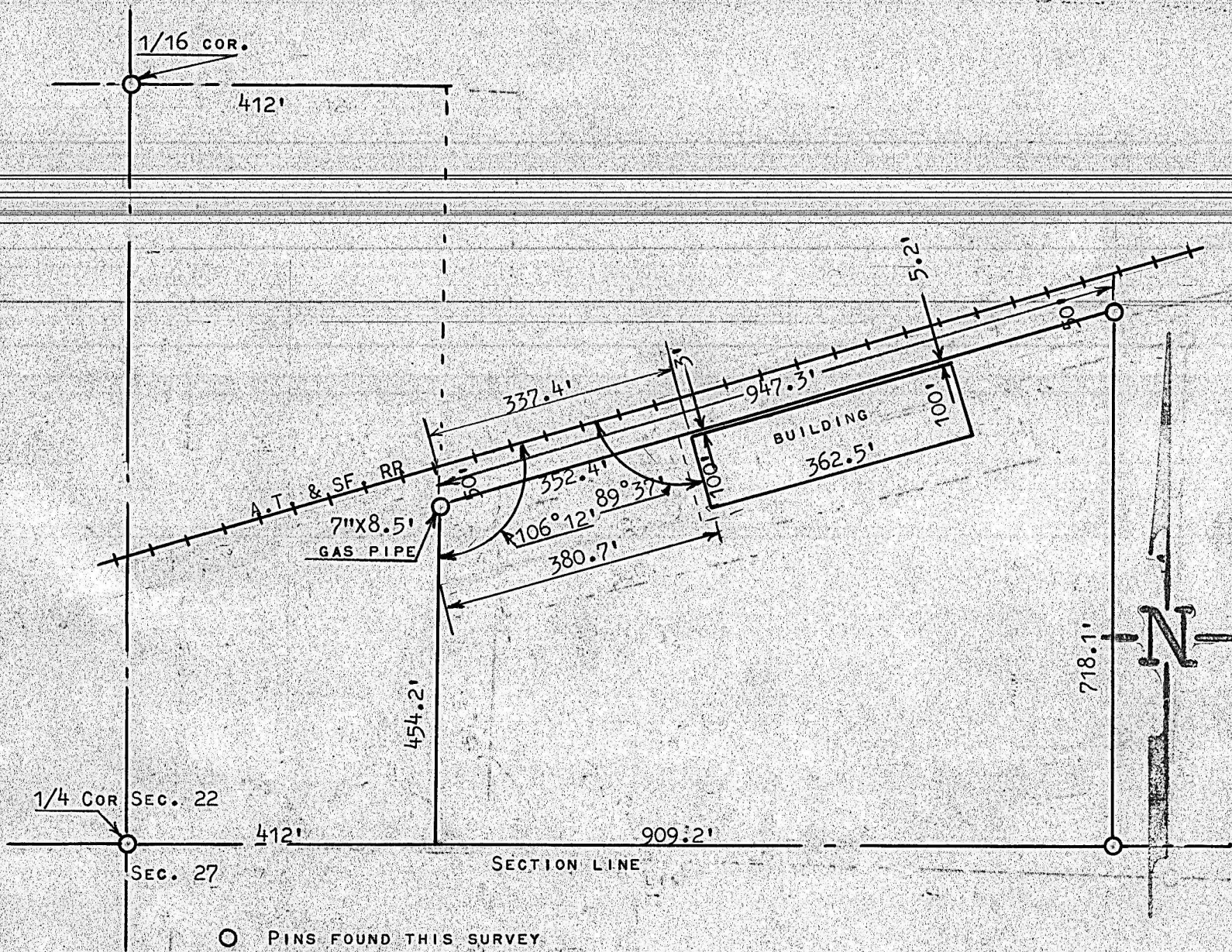


LOCATE BUILDING ON TRACT OF LAND  
SE1/4 SECTION 22, T19S-R3W



STATE OF KANSAS )  
COUNTY OF MCPHERSON )

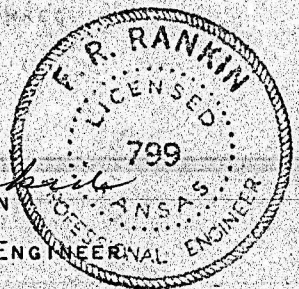
I, FRANCIS R. RANKIN LICENSED PROFESSIONAL ENGINEER OF THE  
STATE OF KANSAS HERBY CERTIFY THE ABOVE SURVEY IN THE SE1/4 SECTION OF  
22 T19S R3W OF THE 6TH P.M. WAS MADE UNDER MY SUPERVISION. I FUTHER CERTIFY  
THAT ALL LINES DIMENSIONS OF BUILDING LOCATION ARE AND CORRECT SO FAR AS  
IT IS KNOWN TO ME.

SURVEY CALLED FOR BY WAYNE NIGHTENGALE

SIGNED THIS 30 DAY OF NOVEMBER, 1964

*Francis Rankin*  
FRANCIS RANKIN

PROFESSIONAL ENGINEER  
MCPHERSON, COUNTY



NOTE: DIMENSIONS AROUND THE PROPERTY SHOWN ARE AS THEY ARE IN THE REGESITER  
OF DEEDS OFFICE