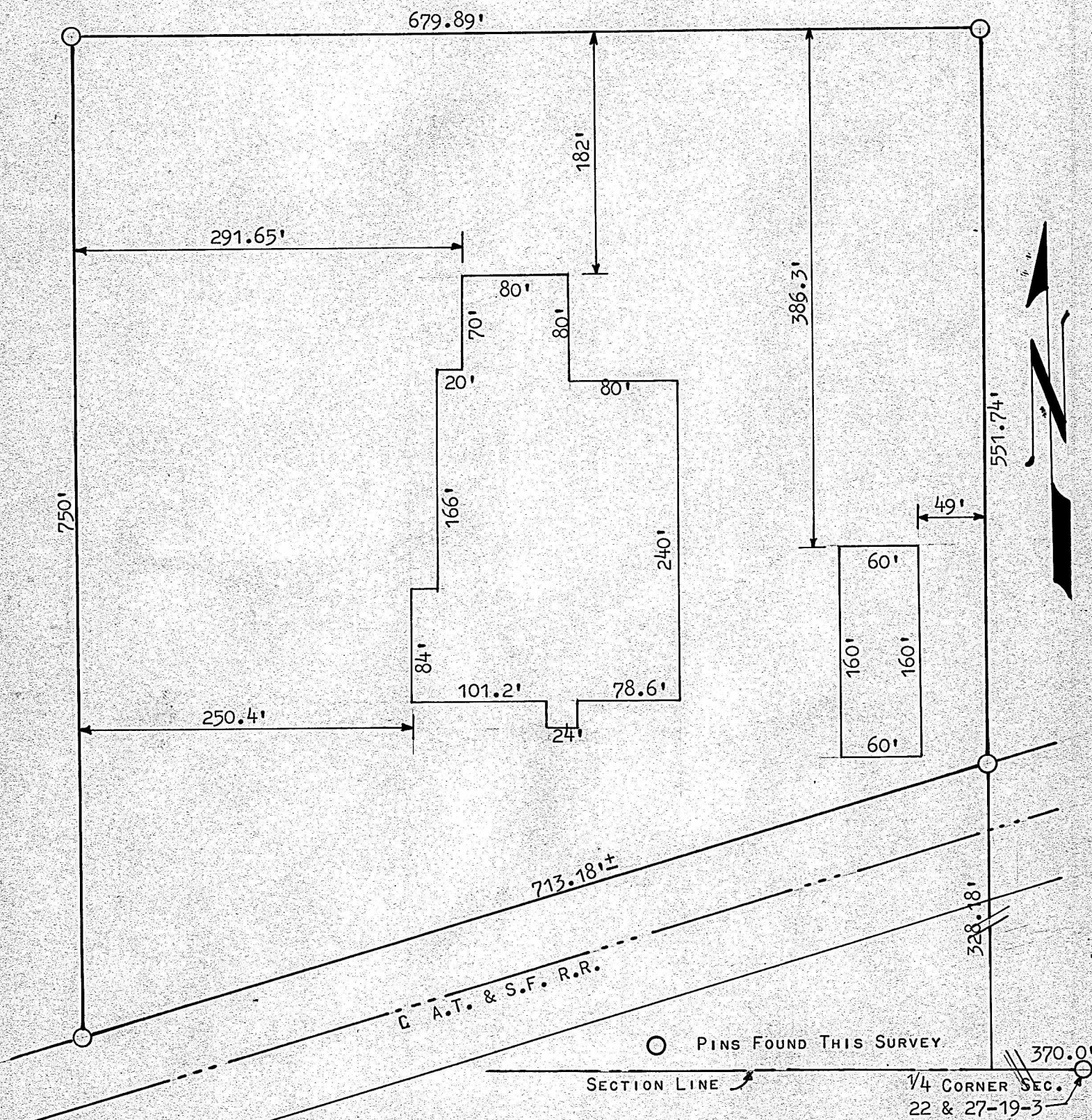


A SURVEY IN THE SE¹/₄ SW¹/₄
SECTION 22, T19S, R3W



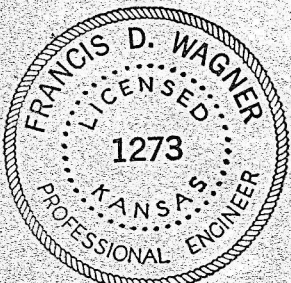
STATE OF KANSAS)
COUNTY OF McPHERSON) SS

I, FRANCIS D. WAGNER, COUNTY ENGINEER OF McPHERSON COUNTY, KANSAS, DO HEREBY CERTIFY THAT I DID CAUSE TO BE DONE, A SURVEY TO LOCATE THE MAJOR IMPROVEMENTS OF THE KIT MANUFACTURING COMPANY ON A TRACT OF LAND LOCATED IN THE SE¹/₄ SW¹/₄ SECTION 22, T19S, R3W OF THE 6TH P.M. AND THAT THE ACCOMPANYING PLAT IS A TRUE EXHIBIT OF SAID SURVEY.

Francis D. Wagner

FRANCIS D. WAGNER
COUNTY ENGINEER
McPHERSON COUNTY

DATED JULY 13, 1960



MICROFILM